

To English

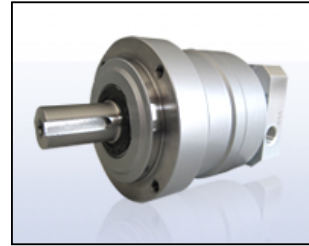
Able reducer
Specification sheet

Reducer model

VRL-155C-10-K5-38JA32
(Shaft with key)

1.Reducer specification

Ratio	10
Backlash	5 arc-min
Allowable nominal torque	240 Nm
Allowable maximum torque	470 Nm
Allowable average input speed	2000 rpm
Allowable maximum input speed	4000 rpm
Allowable radial load (Applied to the output shaft center.)	4700 N
Allowable axial load (Applied to the output side bearing.)	4100 N
Approx. weight	16 kg
Moment of inertia	9.6 kg·cm ²
Lubrication type	Grease
Color of the paint	Silver



*The actual appearance might be different.