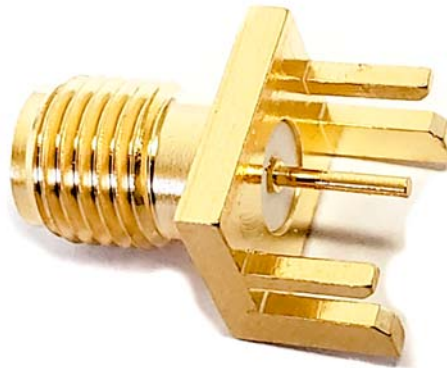
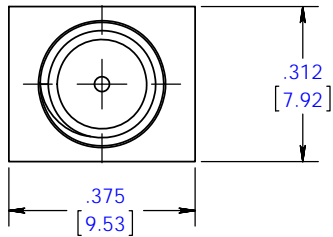


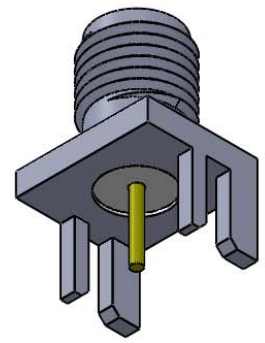
**BU-1420701801****(Low Loss PCB Edge Mount SMA Jack with Round Contact)**

- Low VSWR Board edge, end launch mounting
- Designed to mount on .062" (1.57mm) Circuit Boards.
- Impedance: 50  $\Omega$
- Frequency: DC to 18 Ghz.
- VSWR : 1.35 @ 10 Ghz. With LMR-100 cable
- Working Voltage: 335 VRMS Max
- Dielectric Withstand: 1000 VRMS
- Contact Resistance: 3 milliohms
- Insertion Loss: .18 dB Maximum
- Mating Cycles: 500 Minimum
- RoHS 3 compliant

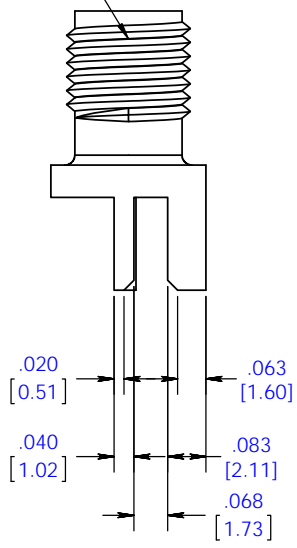
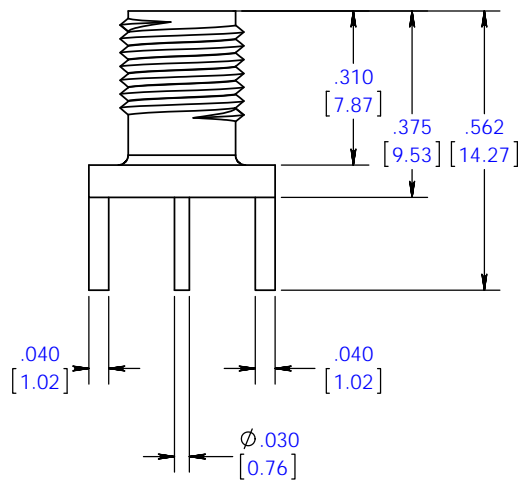
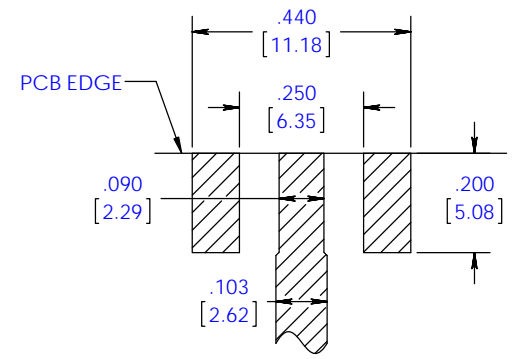
8 7 6 5 4 3 2 1



1/4-36 UNS-2A

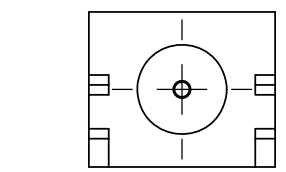


**RECOMMENDED PAD FOOTPRINT**



**NOTES:**

- 1) Material:  
 Body - Brass  
 Gold PL. .00001 min over  
 Nickel PL. .00005 min over  
 Copper PL .00005 min.  
 Contact - Beryllium Copper  
 Gold PL. .00003 min over  
 Nickel PL. .00005 min over  
 Copper PL. .00005 min.  
 Insulator - PTFE (Teflon)
- 2) Electrical Specifications  
 Impedance : 50 Ohms  
 VSWR : 1.35 @ 10Ghz. LMR-100  
 Contact Resistance : 3 milliohms  
 Frequency : 0 to 18 GHz  
 Working Voltage : 335 VRMS Maximum  
 Dielectric Withstand : 1000 VRMS  
 Insulator Resistance : 5 megaohms  
 Insertion loss : .18 dB Maximum
- 3) Max Torque: 10 inch-pounds (1.1 Nm)
- 4) Mating Cycles: 500 Minimum
- 6) Temperature Range: -65 °C To +165 °C



UNLESS OTHERWISE SPECIFIED:		NAME	DATE	<b>MUELLER ELECTRIC</b>
DIMENSIONS ARE IN: INCHES/MM		DRAWN	RCM	
TOLERANCES:		CHECKED		TITLE:
ANGULAR: ±1 DEGREE		ENG APPR.		<b>PCB Edge Mount SMA 50 Ohm Receptable</b>
TWO PLACE DECIMAL ±.015		MFG APPR.		
THREE PLACE DECIMAL ±.005		Q.A.		SIZE
THIRD ANGLE PROJECTION		COMMENTS:		<b>B</b>
MATERIAL				DWG. NO.
See Notes				<b>BU-1420701801</b>
FINISH				REV
STANDARD				<b>B</b>
DO NOT SCALE DRAWING				SCALE: 4:1
				SHEET 1 OF 1

**PROPRIETARY AND CONFIDENTIAL**  
 THE INFORMATION CONTAINED IN THIS DRAWING IS THE SOLE PROPERTY OF MUELLER ELECTRIC COMPANY. ANY REPRODUCTION IN PART OR AS A WHOLE WITHOUT THE WRITTEN PERMISSION OF MUELLER ELECTRIC COMPANY IS PROHIBITED.

8 7 6 5 4 3 2 1

D

C

B

A

D

C

B

A