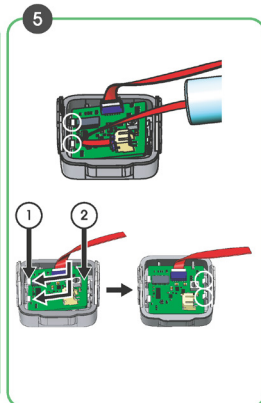
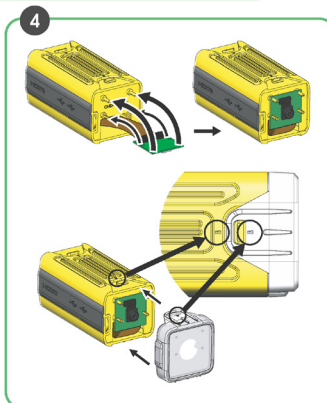
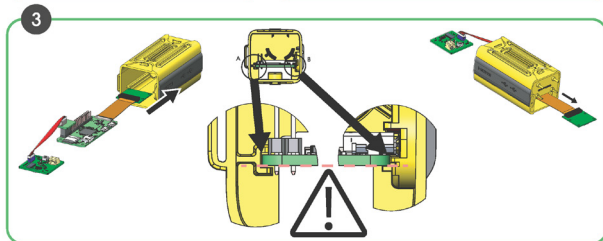
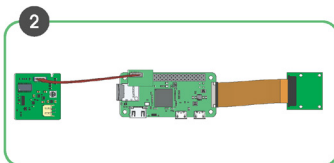
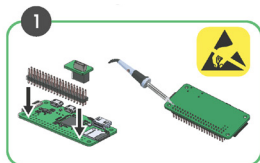


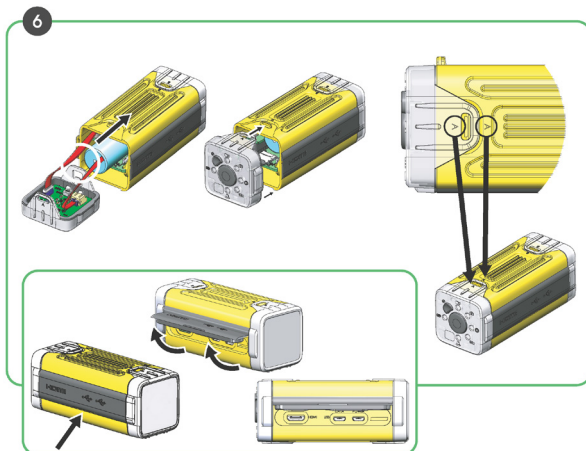
multicomp^{PRO}



Pre-built ActionCam P-1900029-21 ActionCam Self Assembly Kit P-1900030-21

ASSEMBLY INSTRUCTIONS





Assembly Instructions



Power-up and Operation



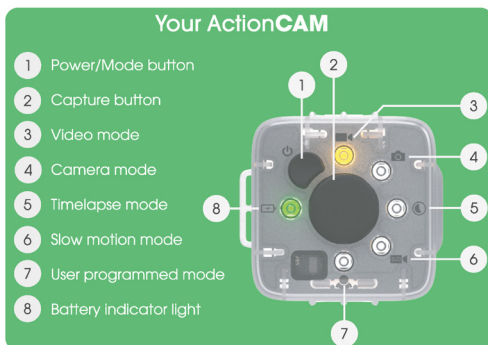
For detailed help and further instructions go to:-
www.raspberrypioplastics.com/actioncam

You will need to download the ISO file to your SD card. The instructions are at:-
www.raspberrypioplastics.com/actioncam-software-setup

For instructions on how to make an ISO image into a bootable SD card, a guide can be found at:- www.raspberrypioplastics.com/actioncam-bootable-sd-guide

If you are still having problems send an email to:-
info@raspberrypioplastics.co.uk

OPERATION

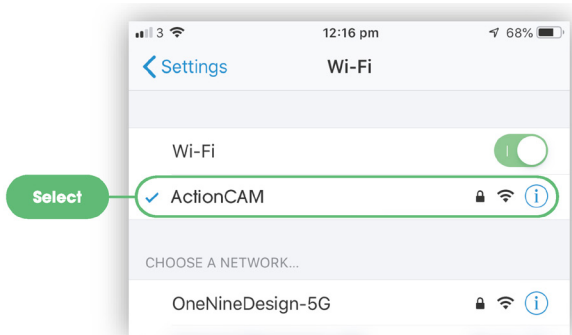


Press & Hold



- Power on the ActionCam by pressing and hold the power button.

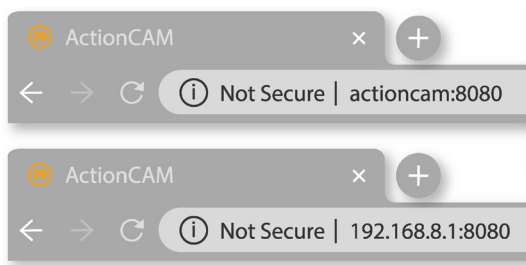
- On your smartphone/tablet/ PC network list find the ActionCam wifi access point.
- Click on ActionCam and enter the password **onenine19** to connect.



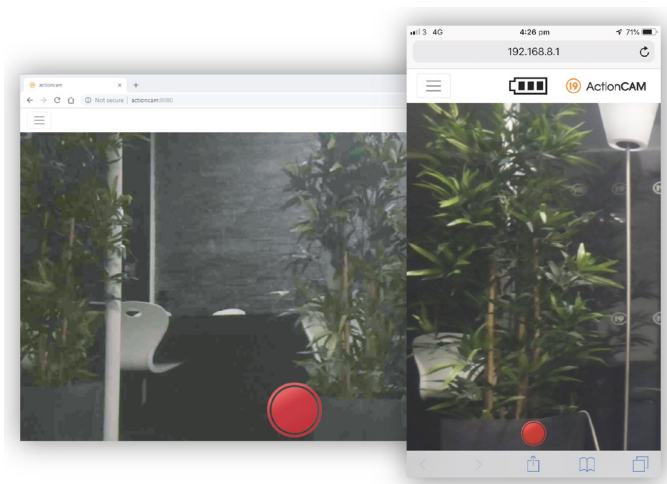
NOTE: The ActionCam may require restarting after the first boot before the access point becomes available.

ACCESSING THE CAMERA PREVIEW

1. Having connected the ActionCam successfully to your smartphone/tablet/PC open a web browser on your device and in the address bar enter:- **<http://actioncam:8080>** or on some devices **<http://192.168.8.1:8080>**

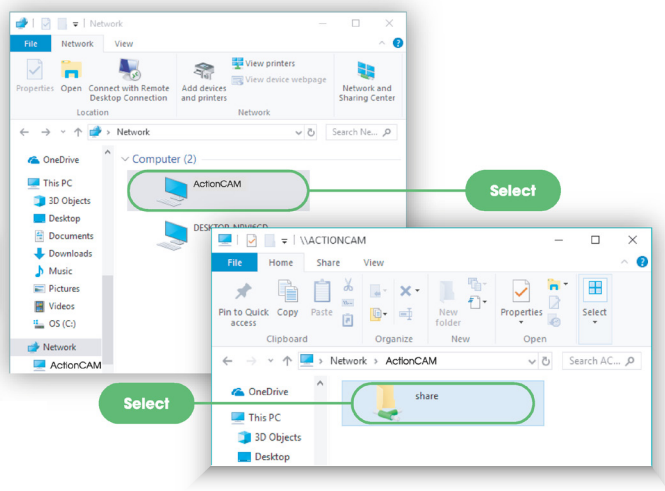


2. This will open the ActionCam camera preview page in your browser.

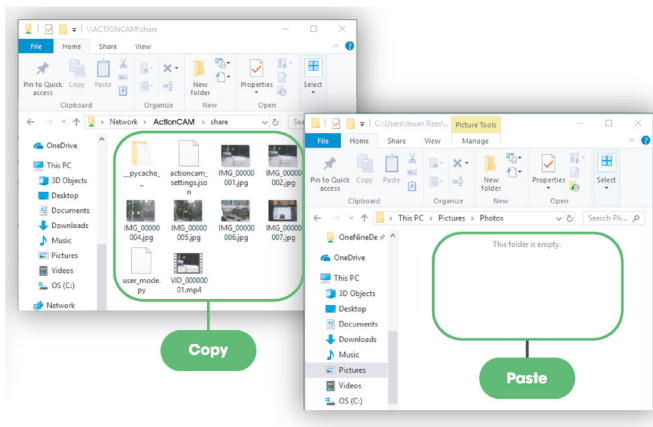


ACCESSING SAVED FILES

- Having connected the ActionCam successfully to your smartphone/tablet/PC open your file explorer (Finder on Apple) and navigate to:- **Network/actioncam/share** to find the saved files.



- Copy the files from the /share directory to a location created on your device.



INFORMATION ON WASTE DISPOSAL FOR CONSUMERS OF ELECTRICAL & ELECTRONIC EQUIPMENT.

When this product has reached the end of its life it must be treated as Waste Electrical & Electronic Equipment (WEEE). Any WEEE marked products must not be mixed with general household waste, but kept separate for the treatment, recovery and recycling of the materials used. Contact your local authority for details of recycling schemes in your area.

Made in UK. LS12 2QQ

Man Rev 1.0