

# CompactPRO™

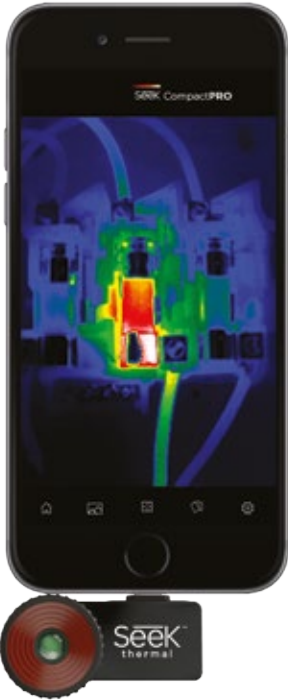
**AFFORDABLE, HIGH-PERFORMANCE  
THERMAL IMAGING FOR YOUR SMARTPHONE.**

## KEY CAMERA SPECS

- 320 x 240 Thermal Sensor
- 32° Field of View
- 40 to 626F Temperature Range
- 6 inches to 1,800 feet Distance
- Works Day & Night
- Waterproof Carrying Case

**Seek**  
thermal

[thermal.com](http://thermal.com)



CompactPRO is our most advanced thermal imaging camera designed for your smartphone. Made for iPhone® and Android™ top models, this highly-portable thermal imaging camera features a large, 320x240 thermal sensor with high sensitivity and a wide, 32-degree field of view. Offering adjustable thermal span, level, and emissivity settings, the CompactPRO delivers unprecedented high-resolution thermal imaging and software capabilities available at this price.

**Designed and Manufactured in Santa Barbara, California with Global Components.**

Product Name:	Seek CompactPro
Product Type:	Thermal Imaging Camera Made for Smartphones
Seek CompactPro Made for iPhone:	Part Number: SEE-LQ-EAAX
Seek CompactPro Made for Android (Micro USB):	Part Number: SEE-UQ-EAAX
Seek CompactPro Made for Android (USB-C):	Part Number: SEE-CQ-AAAX

Single Unit:	
Included in the box:	<ul style="list-style-type: none"><li>Seek CompactPRO</li><li>Waterproof Carrying Case</li></ul>
Device Dimensions (H x W x D):	25.4 x 44.6 x 25.4mm
Device Weight:	14.2g
Box Dimensions (H x W x D):	177.8 x 95.3 x 31.8mm
Box Weight:	235.3g

## KEY FEATURES

**320 x 240 High-Resolution Thermal Sensor**  
76,800 temperature pixels for maximum image clarity and sensitivity

**Adjustable Emissivity**  
Calibrate for reflective surfaces when accuracy is critical

**Wide, 32-Degree Field of View**  
Easily scan a large area to identify potential hazards in seconds

**Focusable Lens for Quick Identification**  
Aim and focus from 6 inches to 1,800 feet for the sharpest image

**Utilizes the Power and Display of Your Smartphone**  
Intuitive, free mobile app available on Google Play and iTunes App Store

**Waterproof Case that Protects**  
Comes with its own waterproof case to withstand the elements

## BENEFITS & USES

**Connect-and-Detect Convenience**  
Pocket-sized, highly portable, and easy to use

**See More Thermal Detail Where You Need it Most**  
Level and span controls let you isolate and capture the details that matter

**Accurately Inspect Mechanical and Electrical Equipment**  
Diagnose and assess the problem source quickly

**Safely Monitor Hazardous Environments**  
Evaluate potentially dangerous situations from a safe distance

**Time of Day Won't Slow You Down**  
Safely examine any job site in daylight or total darkness

**Easily Document and Share**  
Record images and video of industrial inspections for accurate documentation