

1 Products affected

Product hierarchy no. *				Part no.	SBU	Type / Description	Customer part no.
SBU	PG	PUG	Type				
02	005	016	0000001210	See list below	Power Entry Module	6762 (snap-in)	

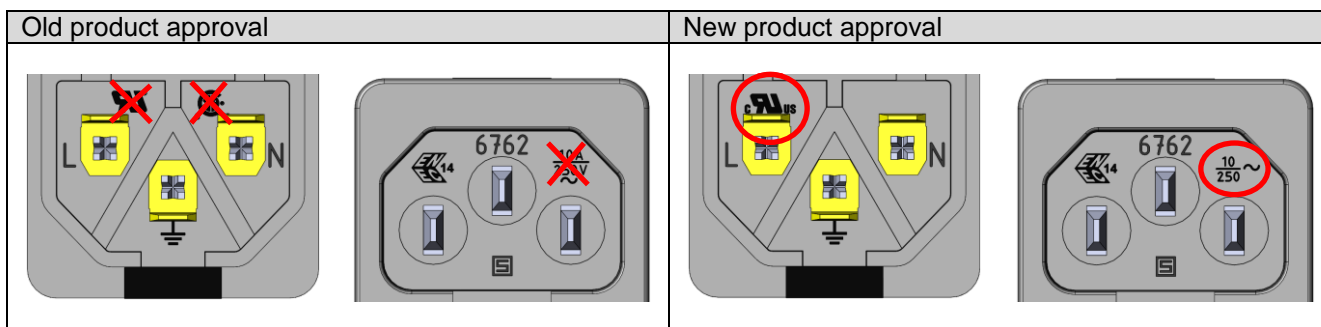
*SBU (2-digit) / PG (3-digit) / PUG (3-digit) / Type (10-digit)

List of part numbers affected						
3-104-866	4304.6056	4304.6064	4304.6067	4304.6072	4304.6169	
4304.6050	4304.6062	4304.6065	4304.6068	4304.6120	4304.6232	
4304.6051	4304.6063	4304.6066	4304.6069	4304.6148		

2 Type of change

Change of approval markings from UR and CSA to the combined cURus on the product socket.

3 Detailed description of change



4 Reason of change

The change is due to a standard update to UL/CSA 60320-1

5 Release date

The change takes effect in ww41/2019 (Date code 1941 or higher on label). The validity of the approval certificates is not affected by this change.

6 Impact of change and recommended action

Form	Yes	Socket new with cURus approval marking
Fit	No	-
Function	No	-
Manufacturing	No	-
Label	No	-
Packaging	No	-

7 Reference Documents / Attachments

Kind of document	Remarks
Datasheet 6762	

Product Change Notification					PCN 6762 (snap-in)		
owner	creation date	release date	released by	change order no	rev	page	
huberth	25.09.2019	01.10.2019	limachcl	2018434	A	1 of 1	D10-039-976