

Han F+B 4/4-M

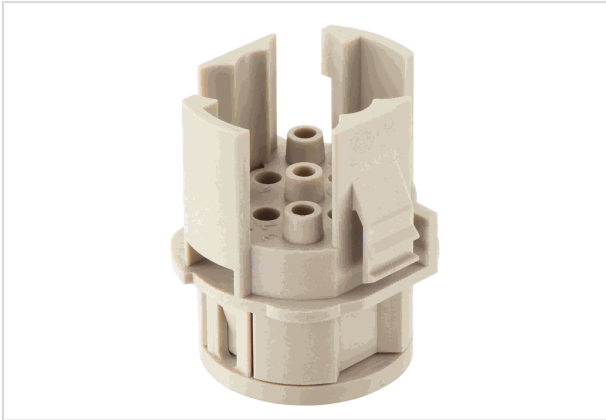


Image is for illustration purposes only. Please refer to product description.

| | |
|--------------------|---|
| Part number | 09 15 508 3001 |
| Specification | Han F+B 4/4-M |
| HARTING eCatalogue | https://b2b.harting.com/09155083001 |

Identification

| | |
|----------|----------------------|
| Category | Inserts |
| Series | Han [®] F+B |

Version

| | |
|---------------------|--|
| Termination method | Crimp termination |
| Gender | Male |
| Number of contacts | 4 |
| Additional contacts | + 4 additional signal contacts |
| PE contact | Yes |
| Details | Please order crimp contacts separately. 4x Han E [®] 4x Han D [®] |
| Details | The connector series Han [®] F+B equipped with all contacts may be used for voltages up to 400 V, pollution degree 3. A modified contact loading arrangement permits use up to 500 V also in the same pollution degree. |

Technical characteristics

| | |
|-------------------------|----------------------------|
| Conductor cross-section | 0.14 ... 4 mm ² |
| Rated current | 20 A |
| Rated voltage | 400 V |
| Rated impulse voltage | 6 kV |
| Pollution degree | 3 |
| Rated current (signal) | 10 A |
| Rated voltage (signal) | 250 V |



Pushing Performance

Technical characteristics

| | |
|---|-------------------|
| Rated impulse voltage (signal) | 4 kV |
| Pollution degree (signal) | 3 |
| Insulation resistance | $>10^{10} \Omega$ |
| Limiting temperature | -40 ... +125 °C |
| Mating cycles | ≥ 500 |
| Mating cycles with other HMC components | $\geq 3,000$ |

Material properties

| | |
|---|------------------------|
| Material (insert) | Polycarbonate (PC) |
| Colour (insert) | RAL 7032 (pebble grey) |
| Material flammability class acc. to UL 94 | V-0 |
| RoHS | compliant |
| ELV status | compliant |
| China RoHS | e |
| REACH Annex XVII substances | No |
| REACH ANNEX XIV substances | No |
| REACH SVHC substances | No |

Specifications and approvals

| | |
|----------|-----------------------|
| UL / CSA | UL 2237 PVVA2.E318390 |
|----------|-----------------------|

Commercial data

| | |
|--------------------------------|---|
| Packaging size | 1 |
| Net weight | 10.88 g |
| Country of origin | Germany |
| European customs tariff number | 85389099 |
| eCl@ss | 27440205 Contact insert for industrial connectors |

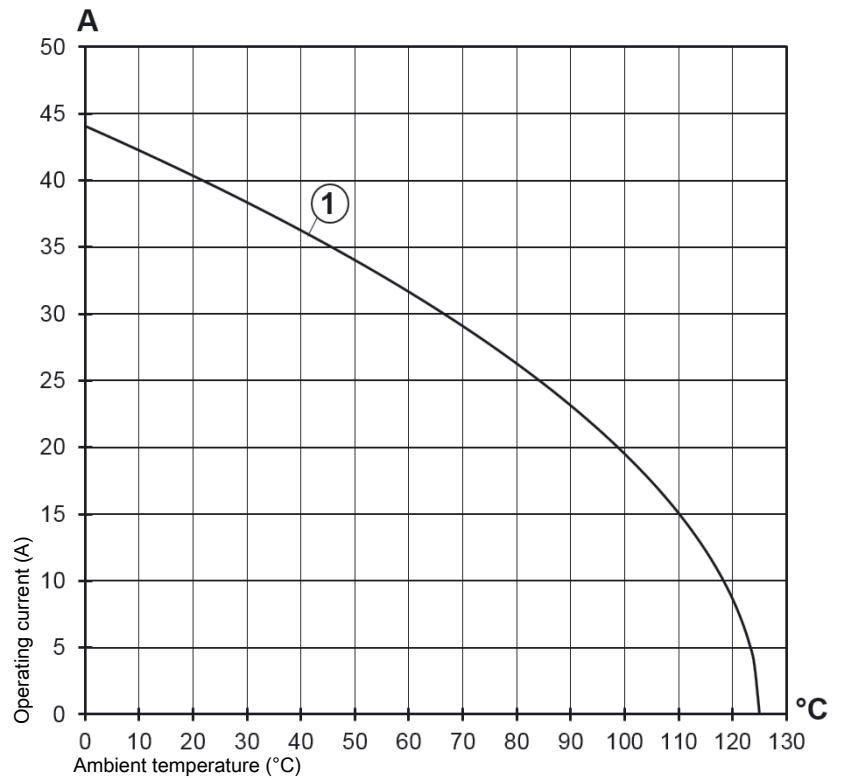


Pushing Performance

Current carrying capacity

The current carrying capacity of the connectors is limited by the thermal load capability of the contact element material including the connections and the insulating parts. The derating curve is therefore valid for currents which flow constantly (non-intermittent) through each contact element of the connector evenly, without exceeding the allowed maximum temperature.

Measuring and testing techniques acc. to IEC 60512-5-2



① Conductor cross-section 4 mm²
Current rating of the Han E[®] contacts