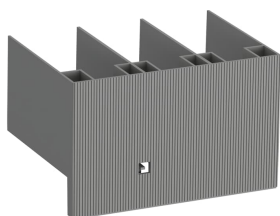


PRODUCT-DETAILS

BEY96-4

BEY96-4 Connection Set for Star-Delta Starter



General Information

Extended Product Type	BEY96-4
Product ID	1SBN083913R2000
EAN	3471523130975
Catalog Description	BEY96-4 Connection Set for Star-Delta Starter
Long Description	<p>The BEY and BED connection sets are used to connect the main poles of the Line, Delta and Starcontactors of a star-delta starter.</p> <p>The connection sets are made up of:</p> <ul style="list-style-type: none"> • Line contactor / delta contactor: <ul style="list-style-type: none"> -- BEY: upstream phase-to-phase connection -- BED: upstream connection in parallel • Delta contactor / star contactor: downstream connection in parallel <ul style="list-style-type: none"> • Star contactor: star point upstream • Insulated, solid copper bar.

Ordering

E-Number (Sweden)	3210220
EAN	3471523130975
Minimum Order Quantity	1 piece
Customs Tariff Number	85389099

Dimensions

Product Net Width	140 mm
Product Net Height	40 mm

Product Net Depth / Length	21.05 mm
Product Net Weight	0.25 kg

Container Information

Package Level 1 Units	bag 1 piece
Package Level 1 Width	150 mm
Package Level 1 Height	20 mm
Package Level 1 Depth / Length	200 mm
Package Level 1 Gross Weight	0.26 kg
Package Level 1 EAN	3471523130975
Package Level 2 Units	box 20 piece
Package Level 2 Gross Weight	5.2 kg
Package Level 3 Units	840 piece

Environmental

RoHS Status	Following EU Directive 2011/65/EU
-------------	-----------------------------------

Additional Information

Medium Description	BEY96-4 Connection Set for Star-Delta Starter is used to easily connect the main poles of an AF80 to AF96 to set up a Star-Delta. The connection sets are made up, for line contactor / Delta contactor of an upstream phase to phase connection, for Delta contactor / Star contactor a downstream connection in parallel, for star contactor a Star point upstream. The connection sets are made of insulated copper bar.
Order Multiple	1 piece
Product Main Type	Accessories for Block Contactors
Product Name	Connection Set
RoHS Date	20171115
Suitable For	AF80 AF96
Terminal Type	Screw Terminals

Certificates and Declarations (Document Number)

Declaration of Conformity - CE	1SBD250021U1000
Environmental Information	1SBD250191E1000
Instructions and Manuals	1SBC101039M6801
RINA Certificate	RINA_ELE084013XG
RoHS Information	1SBD250021U1000
UL Certificate	UL_20150520-E312527_5_2
UL Listing Card	UL_E312527

Classifications

ETIM 4	EC002498 - Accessories for low-voltage switch technology
ETIM 5	EC002498 - Accessories for low-voltage switch technology
ETIM 6	EC002498 - Accessories for low-voltage switch technology

ETIM 7

EC002498 - Accessories for low-voltage switch technology

UNSPSC

39120000

WEEE Category

5. Small Equipment (No External Dimension More Than 50 cm)

Categories

Low Voltage Products and Systems → Control Products → Contactors → Block Contactors Accessories

