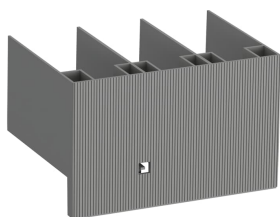


PRODUCT-DETAILS

BED145A

BED145A Connection Set



General Information

Extended Product Type	BED145A
Product ID	1SFN084703R1000
EAN	7320500204023
Catalog Description	BED145A Connection Set
Long Description	Line and load side busbar kit for 3 pole star-delta / wye-delta starters w or w/o mechanical intrlock

Ordering

E-Number (Norway)	4120532
E-Number (Sweden)	3228905
EAN	7320500204023
Minimum Order Quantity	1 piece
Customs Tariff Number	85389099

Dimensions

Product Net Width	43 mm
Product Net Height	240 mm
Product Net Depth / Length	36 mm
Product Net Weight	0.74 kg

Container Information

Package Level 1 Units	box 1 piece
Package Level 1 Width	470 mm
Package Level 1 Height	260 mm
Package Level 1 Depth / Length	90 mm
Package Level 1 Gross Weight	1.3 kg
Package Level 1 EAN	7320500204023

Environmental

RoHS Status	Following EU Directive 2011/65/EU
-------------	-----------------------------------

Additional Information

Product Main Type	BED
Product Name	Connection Set
RoHS Date	1713
Suitable For	AF145
Terminal Type	Screw Terminals

Certificates and Declarations (Document Number)

Declaration of Conformity - CE	2CMT005321
Instructions and Manuals	N/A
RoHS Information	2CMT005321

Classifications

ETIM 4	EC002498 - Accessories for low-voltage switch technology
ETIM 5	EC002498 - Accessories for low-voltage switch technology
ETIM 6	EC002498 - Accessories for low-voltage switch technology
ETIM 7	EC002498 - Accessories for low-voltage switch technology
Object Classification Code	W
UNSPSC	39121529
WEEE Category	5. Small Equipment (No External Dimension More Than 50 cm)

Categories

Low Voltage Products and Systems → Control Products → Contactors → Block Contactors Accessories

