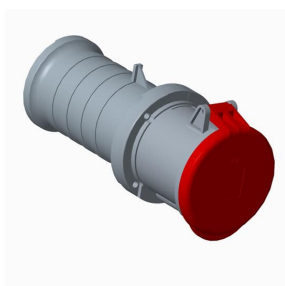

PRODUCT-DETAILS

463C6

Ind. P&S#463C6



General Information

Extended Product Type	463C6
Product ID	2CMA166862R1000
EAN	7392696668620
Catalog Description	Ind. P&S#463C6
Long Description	Connector, earthing sleeve position 6h, rated current 63A, IP44 splashproof, 3-poles+neutral+earth, frequency 50-60 Hz, color code Red

Ordering

E-Number (Sweden)	E2416355
E-Number (Finland)	2421756
E-Number (Norway)	1565383
EAN	7392696668620
Country of Origin	Czech Republic (CZ)
Minimum Order Quantity	1 piece

Dimensions

Product Net Width	98 mm
Product Net Height	112 mm

Product Net Length	224 mm
Product Net Depth / Length	224 mm
Product Net Weight	0.96 kg

Container Information

Package Level 1 Width	114 mm
Package Level 1 Depth / Length	114 mm
Package Level 1 Height	230 mm
Package Level 1 Gross Weight	0.96 kg
Package Level 1 EAN	7392696668620
Package Level 1 Units	box 1 piece
Package Level 2 Units	171 piece

Technical UL/CSA

Ampere Rating UL/CSA	63 A
Tightening Torque UL/CSA	31 in-lb

Certificates and Declarations (Document Number)

Declaration of Conformity - CE	2CMC700005D0001
Declaration	2CMC700005D0001
Environmental Information	2CMC000056M0000
RoHS Information	2CMC700005D0001
SEMKO Certificate	1614200
REACH Declaration	2CMC700005D0001

Additional Information

Additional Information	3P+N+E
Ambient Temperature	-25 ... 40 °C
Cable Cross-Section	4 ... 16 mm ²
Cable Diameter	17 ... 35 mm
Cable Entry Position	Cable entry, membrane
Color	Red
Connection Type	Screw
Degree of Protection	IP44
Enclosure Material	Thermoplastic polyester (PBT)
Frequency (f)	50 Hz 60 Hz
Function	Connector
Housing Material	Thermoplastic (PBT)
Invoice Description	Ind. P&S#463C6

Material	Plastic
Number of Poles	5
Order Multiple	1 piece
Product Main Type	TC
Product Name	Industrial Connector
Protection Type	Splashproof
Rated Current (I_n)	63 A
Rated Voltage (U_r)	200/346 ... 240/415 V
Recommended Screw Driver	PH2
RoHS Date	L23
Standards	IEC 60309-1, -2
Suitable For	Connectors
Suitable for Product Class	IEC Industrial Plugs and Sockets
Instructions and Manuals	2CMC000038M0001
Installation Manual	2CMC000038M0001
RAL Number	RAL 7001 - Silver Grey

Classifications

eClass	27440509
UNSPSC	39121406

Technical

Wire Size	8 ... 4 AWG
Tightening Torque	3.5 N·m

Categories

Low Voltage Products and Systems → Industrial Plugs and Sockets → Tough & Safe → Connectors

