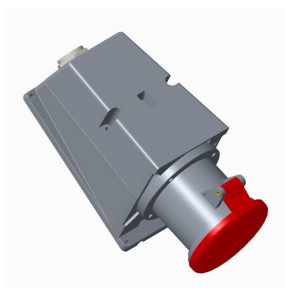

PRODUCT-DETAILS

463RS6

Surface socket-outlet, 6h, 63A, IP44, 3P+N+E



General Information

Extended Product Type	463RS6
Product ID	2CMA167484R1000
EAN	7392696674843
Catalog Description	Surface socket-outlet, 6h, 63A, IP44, 3P+N+E
Long Description	Surface socket-outlet, earthing sleeve position 6h, rated current 63A, IP44 splashproof, 3-poles+neutral+earth, frequency 50-60 Hz, color code Red

Ordering

E-Number (Sweden)	E2416518
E-Number (Finland)	2421226
E-Number (Norway)	2416518
EAN	7392696674843
Country of Origin	Czech Republic (CZ)
Minimum Order Quantity	1 piece

Dimensions

Product Net Width	107 mm
Product Net Height	254 mm

Product Net Length	136 mm
Product Net Depth / Length	254 mm
Product Net Weight	1.05 kg
Mechanical Drawings	9AKK107680A0707

Container Information

Package Level 1 Width	152 mm
Package Level 1 Depth / Length	120 mm
Package Level 1 Height	265 mm
Package Level 1 Gross Weight	1.06 kg
Package Level 1 EAN	7392696674843
Package Level 1 Units	box 1 piece
Package Level 2 Units	125 piece

Technical UL/CSA

Ampere Rating UL/CSA	60 A
Tightening Torque UL/CSA	31 in-lb

Certificates and Declarations (Document Number)

Declaration of Conformity - CE	2CMC700005D0001
Declaration	2CMC700005D0001
Environmental Information	2CMC000056M0000
RoHS Information	2CMC700005D0001
SEMKO Certificate	1614199
REACH Declaration	2CMC700005D0001

Additional Information

Additional Information	3P+N+E
Ambient Temperature	-25 ... 40 °C
Cable Cross-Section	6 ... 25 mm ²
Cable Entry Position	Cable entry, M32, alternative rear knock-out cable entry
Color	Red
Connection Type	Screw
Degree of Protection	IP44
Enclosure Material	Thermoplastic polyester (PBT)
Frequency (f)	50 Hz 60 Hz
Function	Surface socket outlet
Housing Material	Thermoplastic (PBT)
Invoice Description	Ind. P&S#463RS6

Material	Plastic
Mounting Holes	170x95
Number of Poles	5
Order Multiple	1 piece
Product Main Type	TRS
Product Name	Wall mounted socket
Protection Type	Splashproof
Rated Current (I_n)	63 A
Rated Voltage (U_r)	200/346 ... 240/415 V
Recommended Screw Driver	PH2
RoHS Date	L23
Standards	IEC 60309-1, -2
Suitable For	Surface Socket Outlets
Suitable for Product Class	IEC Industrial Plugs and Sockets
Instructions and Manuals	2CMC000038M0001
Installation Manual	2CMC000038M0001
RAL Number	RAL 7012 - Basalt Grey

Classifications

eClass	27440510
UNSPSC	39121406

Technical

Wire Size	8 ... 4 AWG
Tightening Torque	3.5 N·m

Categories

Low Voltage Products and Systems → Industrial Plugs and Sockets → Easy & Safe → Surface Socket Outlets

