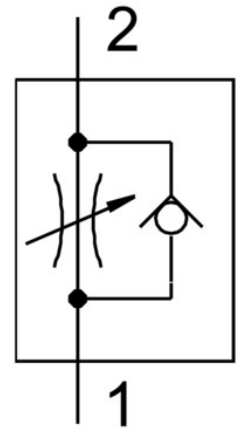


One-way flow control valve GR-1/8-B

Part number: 151215

FESTO



Data sheet

Feature	Value
Type code	GR
Valve function	Flow control non-return function
Pneumatic connection 1	G1/8
Pneumatic connection 2	G1/8
Adjusting element	Knurled screw
Type of mounting	With through-hole Optionally: Front panel mounting
Standard nominal flow rate in flow control direction	210 l/min
Standard nominal flow rate in non-return direction	180 l/min ... 275 l/min
Operating pressure	0.5 bar ... 10 bar
Ambient temperature	-20 °C ... 60 °C
Housing material	Wrought aluminum alloy
Mounting position	Any
Symbol	00991453
Explosion prevention and protection	Zone 22 (ATEX) Zone 1 (ATEX) Zone 2 (ATEX) Zone 21 (ATEX) Observe the information on the certificate
Operating medium	Compressed air as per ISO 8573-1:2010 [7:4:4]
Information on operating and pilot media	Operation with oil lubrication possible (required for further use)
Temperature of medium	-20 °C ... 60 °C
Nominal width	3 mm
Product weight	31 g
Note on materials	RoHS-compliant
Seals material	NBR
Sleeve material	POM
Material of adjusting screw	High-alloy steel
Nut material	Wrought aluminum alloy