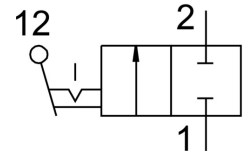


On off valve HE-2-QS-10

Part number: 153469

FESTO



Data sheet

| Feature | Value |
|--|--|
| Type code | HE |
| Operating pressure | -0.095 MPa ... 1 MPa |
| Rotary knob material | POM |
| Releasing ring material | POM |
| Valve function | 2/2 bistable |
| Pneumatic connection 1 | QS-10 |
| Pneumatic connection 2 | QS-10 |
| Actuation type | Manual |
| Type of mounting | Optionally: With through-hole Line installation |
| Standard nominal flow rate | 752.4 l/min |
| Nominal width | 3.5 mm |
| Operating pressure | -0.95 bar ... 10 bar |
| Ambient temperature | 0 °C ... 60 °C |
| Housing material | PBT-reinforced |
| Operating medium | Compressed air as per ISO 8573-1:2010 [7:-:-] |
| Sealing principle | Soft |
| Mounting position | Any |
| Design | Piston gate valve |
| Type of control | Direct |
| Flow direction | Non-reversible |
| Symbol | 00991673 |
| Switching position indication | Knopfrichtung = Durchflussrichtung |
| Information on operating and pilot media | Operation with oil lubrication possible (required for further use) |
| Corrosion resistance class (CRC) | 2 - mäßige Korrosionsbeanspruchung |
| Temperature of medium | 0 °C ... 60 °C |
| Actuating torque | 0.36 Nm |
| Product weight | 41 g |
| Note on materials | RoHS-compliant |
| Seals material | NBR |