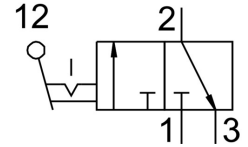
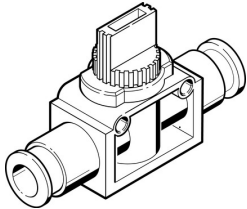


# On off valve HE-3-QS-8

Part number: 153476

FESTO



## Data sheet

Feature	Value
Type code	HE
Operating pressure	-0.095 MPa ... 1 MPa
Rotary knob material	POM
Releasing ring material	POM
Valve function	3/2, bistable
Selection of additional function	With exhaust function
Pneumatic connection 1	QS-8
Pneumatic connection 2	QS-8
Actuation type	Manual
Type of mounting	Optionally: With through-hole Line installation
Standard nominal flow rate	415.8 l/min
Nominal width	4.7 mm
Operating pressure	-0.95 bar ... 10 bar
Ambient temperature	0 °C ... 60 °C
Housing material	PBT-reinforced
Operating medium	Compressed air as per ISO 8573-1:2010 [7:-:-]
Exhaust air function	Without flow control option
Sealing principle	Soft
Mounting position	Any
Design	Piston gate valve
Type of control	Direct
Flow direction	Non-reversible
Symbol	00991278
Switching position indication	Knopfrichtung = Durchflussrichtung
Information on operating and pilot media	Operation with oil lubrication possible (required for further use)
Corrosion resistance class (CRC)	2 - mäßige Korrosionsbeanspruchung
Temperature of medium	0 °C ... 60 °C
Actuating torque	0.36 Nm
Product weight	26 g
Pneumatic connection 3	Not ducted
Note on materials	RoHS-compliant
Seals material	NBR