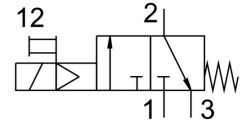


Shut off valve MS6-EE-1/2-10V24

Part number: 542582

FESTO



Data sheet

Feature	Value
Type code	MS6-EE
Design	Piston gate valve
Actuation type	Electrical
Exhaust air function	Without flow control option
Manual override	Non-detenting
Reset method	Mechanical spring
Type of control	Pilot-controlled
Symbol	00991008
Valve function	3/2, closed, monostable
Operating pressure	4 bar ... 10 bar
C value	29 l/sbar
b-value	0.4
Standard nominal flow rate	7000 l/min
Duty cycle	100%
Coil characteristics	24 V DC: 2.5 W
Permissible voltage fluctuations	+/- 10 %
Operating medium	Inert gas Compressed air as per ISO 8573-1:2010 [7:4:4]
Information on operating and pilot media	Operation with oil lubrication possible (required for further use)
Corrosion resistance class (CRC)	2 - Moderate corrosion stress
Note on materials	RoHS-compliant
Temperature of medium	-10 °C ... 60 °C
Degree of protection	IP65
Ambient temperature	-10 °C ... 50 °C
Certification	c UL us - Recognized (OL)
Type of mounting	With accessories Optionally: Line installation
Mounting position	Any
Flow direction	Non-reversible
Product weight	740 g
Pneumatic connection 1	G1/2
Pneumatic connection 2	G1/2
Pneumatic connection 3	G1/2
Pilot air supply port	Internal

Feature	Value
Electrical connection	as per DIN EN 175301-803 Form C Plug Rectangular design
Seals material	NBR
Housing material	Die-cast aluminum
For use in the food industry	See supplementary material information