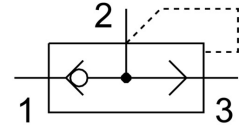
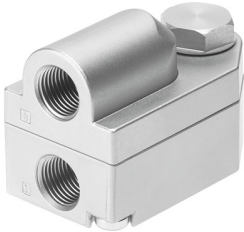


# Quick exhaust valve VBQF-D-G14-E

Part number: 548003

FESTO



## Data sheet

Feature	Value
Type code	VBQF-D
Valve function	Quick exhaust
Pneumatic connection 1	G1/4
Pneumatic connection 2	G1/4
Type of mounting	Screw-in
Standard nominal flow rate exhaust air 6→5 bar	1500 l/min
Standard flow rate exhaust 6→0 bar	2500 l/min
Standard nominal flow rate pressurization 6→5 bar	960 l/min
Operating pressure	0.5 bar ... 10 bar
Ambient temperature	-20 °C ... 80 °C
Housing material	Die-cast aluminum Die-cast zinc
Operating medium	Compressed air as per ISO 8573-1:2010 [7:4:4]
Nominal width	7 mm
Mounting position	Any
Symbol	00991459
Information on operating and pilot media	Operation with oil lubrication possible (required for further use)
Corrosion resistance class (CRC)	1 - Low corrosion stress
Temperature of medium	-20 °C ... 80 °C
Product weight	253 g
Pneumatic connection 3	G1/4
Note on materials	RoHS-compliant
Seals material	NBR