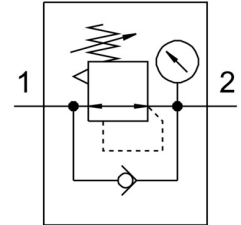


# Pressure regulator MS4-LR-1/8-D6-AS

Part number: 529423

FESTO



## Data sheet

Feature	Value
Size	4
For use in the food industry	See supplementary material information
Type code	MS4-LR
Series	MS
Actuator lock	Rotary knob with detent can be closed with accessories
Mounting position	Any
Design	Directly controlled diaphragm regulator
Controller function	Outlet pressure constant With return flow function With secondary exhausting
Symbol	00991558
Pressure gauge	with pressure gauge
Operating pressure	0.8 bar ... 14 bar
Pressure regulation range	0.3 bar ... 7 bar
Max. pressure hysteresis	0.25 bar
Standard nominal flow rate	1150 l/min
Operating medium	Inert gas Compressed air as per ISO 8573-1:2010 [7:4:4]
Information on operating and pilot media	Operation with oil lubrication possible (required for further use)
Corrosion resistance class (CRC)	2 - Moderate corrosion stress
Storage temperature	-10 °C ... 60 °C
Temperature of medium	-10 °C ... 60 °C
Ambient temperature	-10 °C ... 60 °C
Product weight	225 g
Type of mounting	With accessories Optionally: Line installation Front panel mounting
Pneumatic connection 1	G1/8
Pneumatic connection 2	G1/8
Note on materials	RoHS-compliant
Material of sub-base	Die-cast aluminum
Material of operator panel	POM PA
Seals material	NBR

<b>Feature</b>	<b>Value</b>
Compressed air filter material	PE
Housing material	Die-cast aluminum
Diaphragm material	NBR