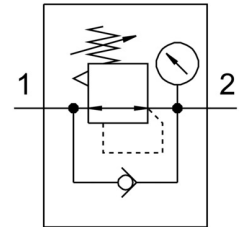


# Pressure regulator MS6-LR-1/2-D6-AS

Part number: 529991

FESTO



## Data sheet

| Feature                                  | Value   |
|--|---|
| Size                                     | 6   |
| For use in the food industry             | See supplementary material information  |
| Type code                                | MS6-LR  |
| Series                                   | MS  |
| Actuator lock                            | Rotary knob with detent<br>can be closed with accessories                                   |
| Mounting position                        | Any   |
| Design                                   | Pressure regulator with pressure gauge  |
| Controller function                      | Outlet pressure constant<br>With primary pressure compensation<br>With secondary exhausting |
| Symbol                                   | 00991558  |
| Pressure gauge                           | with pressure gauge   |
| Operating pressure                       | 0.8 bar ... 20 bar  |
| Pressure regulation range                | 0.3 bar ... 7 bar   |
| Max. pressure hysteresis                 | 0.25 bar  |
| Standard nominal flow rate               | 6500 l/min  |
| Operating medium                         | Compressed air as per ISO 8573-1:2010 [7:4:4]<br>Inert gas                                  |
| Information on operating and pilot media | Operation with oil lubrication possible (required for further use)                          |
| Corrosion resistance class (CRC)         | 2 - Moderate corrosion stress   |
| Storage temperature                      | -10 °C ... 60 °C  |
| Temperature of medium                    | -10 °C ... 60 °C  |
| Ambient temperature                      | -10 °C ... 60 °C  |
| Product weight                           | 730 g   |
| Type of mounting                         | Line installation<br>With accessories<br>Front panel mounting<br>Optionally:                |
| Pneumatic connection 1                   | G1/2  |
| Pneumatic connection 2                   | G1/2  |
| Note on materials                        | RoHS-compliant  |
| Material of operator panel               | PA<br>POM   |
| Seals material                           | NBR   |
| Compressed air filter material           | PE  |

| <b>Feature</b>           | <b>Value</b>      |
|--------------------------|-------------------|
| Housing material         | Die-cast aluminum |
| Diaphragm material       | NBR               |
| Separating disc material | POM               |