

T1 Industrial jack AH IP20

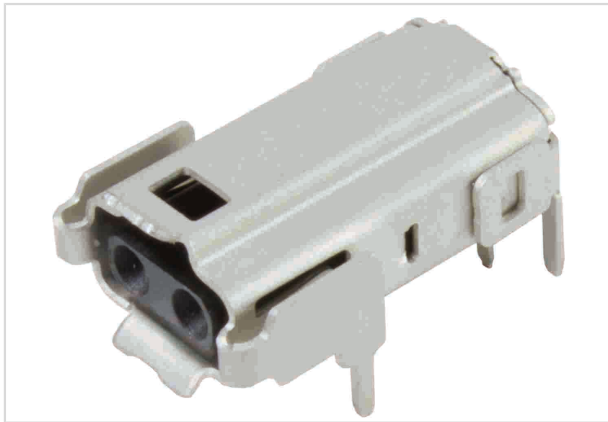


Image is for illustration purposes only. Please refer to product description.

Part number	09 45 281 2800 333
Specification	T1 Industrial jack AH IP20
HARTING eCatalogue	https://b2b.harting.com/09452812800333

Identification

Category	Connectors
Series	HARTING T1 Industrial
Element	PCB connector

Version

Termination method	THR connection
Shielding	Fully shielded, 360° shielding contact
Number of contacts	2
Additional contacts	+ shielding
Pack contents	Sample

Technical characteristics

Rated current	4 A
Rated voltage	60 V DC
Contact resistance	≤20 mΩ
Shielding resistance	≤100 mΩ
Limiting temperature	-40 ... +85 °C
Mating cycles	≥1,000
Degree of protection acc. to IEC 60529	IP20
Test voltage U _{DC}	1 kV (contact-contact) 2.25 kV (contact-ground)
Transmission characteristics	600 MHz Bandwidth



Technical characteristics

Data rate	10 Mbit/s
	100 Mbit/s
	1 Gbit/s
Moisture Sensitivity Level (MSL)	1 acc. to ECA/IPC/JEDEC J-STD-020D
Process Sensitivity Level (PSL)	R0 acc. to ECA/IPC/JEDEC J-STD-020D

Specifications and approvals

Specifications	IEC 63171-6
	IEEE 802.3bu (remote power supply over PoDL = Power over Data Line)
	IEEE 802.3cg (10BASE-T1)
	IEEE 802.3bw (100BASE-T1)
	IEEE 802.3bp (1000BASE-T1)

Commercial data

Packaging size	1
eCl@ss	27440402 PCB connector