



ACCELERATE® HD

(0.635 mm) .025"

ADM6-60-01.5-L-4-2-A

ADM6-30-01.5-L-4-2-A

ADM6-40-01.5-L-4-2-A

ADM6 SERIES

ACCELERATE® HD MICRO INTERFACES

SPECIFICATIONS

For complete specifications and recommended PCB layouts see www.samtec.com?ADM6

Insulator Material:

Black LCP

Contact Material:

Copper Alloy

Plating:

Au or Sn over 50 μ" (1.27 μm) Ni

Operating Temp Range:

-55 °C to +125 °C

Current Rating:

1.34 A per pin (4 pins powered)

RoHS Compliant:

Yes

PROCESSING

Lead-Free Solderable:

Yes

SMT Lead Coplanarity:

(0.10 mm) .004" max

Mates with:
ADF6

PAM 4
56
Gbps

POWER/SIGNAL APPLICATION

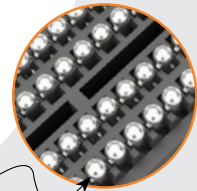


Compatible with UMPT/UMPS for flexible two-piece power/signal solutions

Low profile ultra-slim body design

Optional alignment pin

Solder ball technology for simplified processing



ALSO AVAILABLE (MOQ Required)

- Other lead styles
- Other rows

ADM6	NO. OF POSITIONS	01.5	PLATING OPTION	NO. OF ROWS	SOLDER TYPE	A	"X"R
	-10, -20, -30, -40, -50, -60 (Per Row)		-L = 10 μ" (0.25 μm) Gold on contact area, Matte Tin on tail	-4 = Four Rows	-2 = Lead-Free Solder Ball	Leave blank for no alignment pin -A = Alignment Pin	-TR = Standard Tape & Reel -FR = Full Reel Tape & Reel (must order max. quantity per reel; contact Samtec for quantity breaks)

SPACE-SAVING COMPARISON

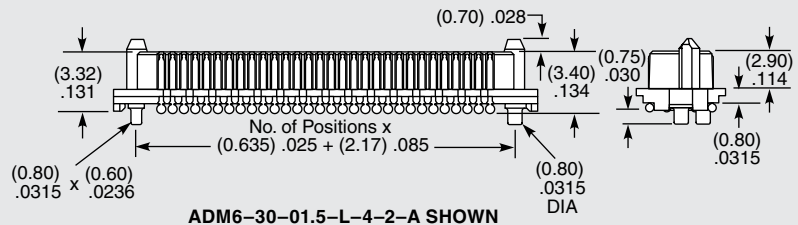
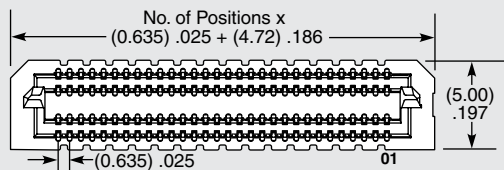


ADX6 Series (240 total positions)



QXH Series (240 total positions)

Actual Size Shown



Notes:
Packaged in Tape & Reel with polyimide pick & place pad.

Some sizes, styles and options are non-standard, non-returnable.

Due to technical progress, all designs, specifications and components are subject to change without notice.

WWW.SAMTEC.COM

All parts within this catalog are built to Samtec's specifications.

Customer specific requirements must be approved by Samtec and identified in a Samtec customer-specific drawing to apply.