



Quality is in the BEX!

- HOME
- New! 2008 Catalog
- Secondary Operations Product Customization
- Custom Enclosure Design
- Custom Protective Boots
- FULL! Product Assembly
- Technical Data Sheets
- about us
- World Wide Distributor



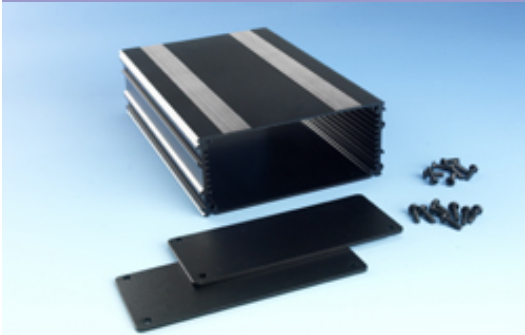
Phone: 847-932-4700
Fax: 847-932-4701



28915 N. Herky Drive, BLD# 107
Lake Bluff, IL 60044 USA
email: sales@boxenclosures.com

BEX Series 5

Detailed Product Sheet



Extruded aluminum case kit with 2 end panels and assembly screws - black HARD COAT anodized, 1.37 H x 5.25 W x 6.30 L" / deep

Part Number:	B5-160BK
Product name:	BEX Series 5
Color:	Black
Size:	1.37Hx5.25Wx6.30L"
Weight in pounds:	0.3
Material:	Aluminum 6063 T6 (HE9)

Technical Drawings:    

Quantity	Price
1 - 99	\$17.26
Price Brackets: 100 - 249	call for price
250 - 499	call for price
500 - 999	call for price
1000 - ∞	call for price



Optional Mounting Lugs Above
Dealers List

[Visit dealer's webpage](#)

#278-0642



Box Enclosures & Assembly Services
28915 N. Herky Drive, BLD# 107, Lake Bluff, IL 60044 Phone 847-932-4700 Fax 847-932-4701
www.boxenclosures.com



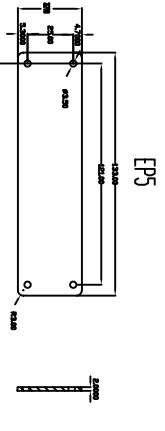
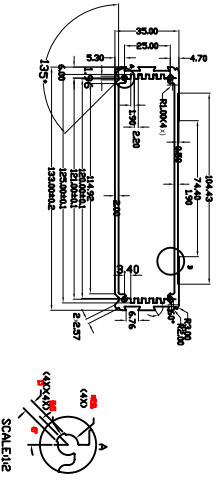
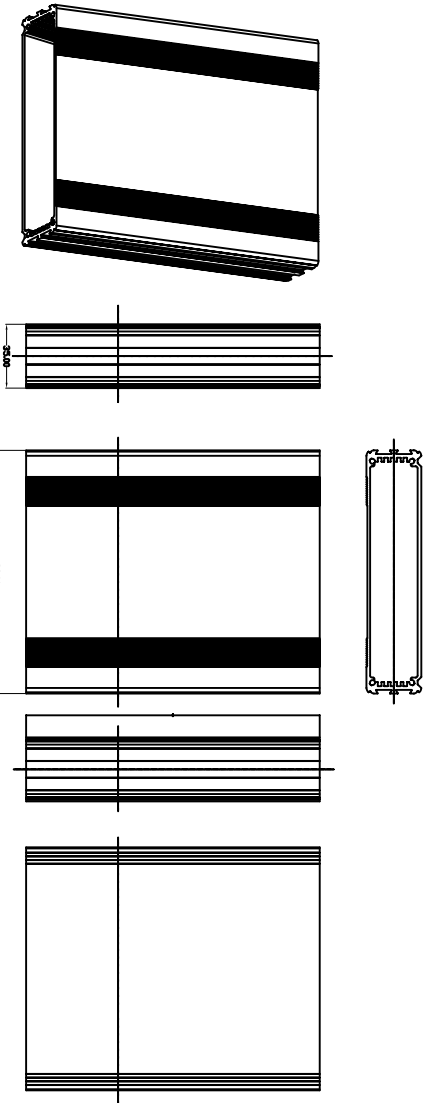
ENCLOSURES & ASSEMBLY SERVICES

BOX ENCLOSURES, INC
28835 N. HERKY DRIVE, #114,
LAKE BLUFF, IL 60044

TEL: 847-932-4700

WWW.BOXENCLOSURES.COM

FAX: 847-932-4701



		Revision:	
Title: 35 - 7-hole - 3-hole Length: 88.28 x 123 mm		Model:	
Material:	Dwg. No.:	Part No.:	
Finish:	Color:	Drn.:	Date:
TOLERANCE all dimension in mm unless otherwise specified		Chk.:	Date:
x ±0.20			
.x ±0.10			
.xx ±0.05			
ANGLE ±0.5°			
Proj.:	A4	Sheet	App. Date
		[of]	

THIS DRAWING IS THE PROPERTY OF AND MAY CONTAIN PROPRIETARY INFORMATION OWNED BY BOX ENCLOSURES. IT IS PROVIDED UNDER A CONFIDENTIAL RELATIONSHIP FOR A SPECIFIC PURPOSE. THE RECIPIENT AGREES TO USE IT ONLY FOR SUCH PURPOSE AND RETURN IT TO BOX ENCLOSURE UPON REQUEST.