



Quality is in the BEX!

- HOME
- New! 2008 Catalog
- Secondary Operations Product Customization
- Custom Enclosure Design
- Custom Protective Boots
- FULL! Product Assembly
- Technical Data Sheets
- about us
- World Wide Distributor



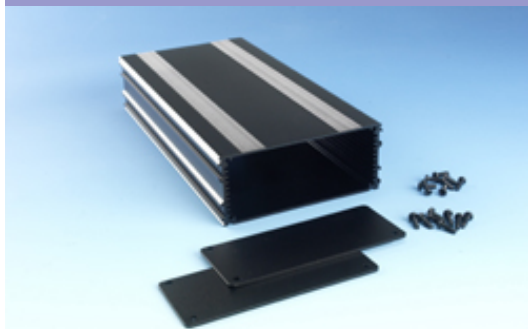
Phone: 847-932-4700
Fax: 847-932-4701



28915 N. Herky Drive, BLD# 107
Lake Bluff, IL 60044 USA
email: sales@boxenclosures.com

BEX Series 5

Detailed Product Sheet



Extruded aluminum case kit with 2 end panels and assembly screws - black HARD COAT anodized, 1.37 H x 5.25 W x 8.66 L" / deep

Part Number:	B5-220BK
Product name:	BEX Series 5
Color:	Black
Size:	1.37Hx5.25Wx8.66L"
Weight in pounds:	0.4
Material:	Aluminum 6063 T6 (HE9)

Technical Drawings:



	Quantity	Price
Price Brackets:	1 - 99	\$21.49
	100 - 249	call for price
	250 - 499	call for price
	500 - 999	call for price
	1000 - ∞	call for price

Color



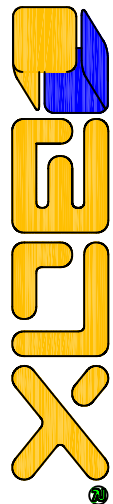
Optional Mounting Lugs Above
Dealers List

[Visit dealer's webpage](#)

#278-0645



Box Enclosures & Assembly Services
28915 N. Herky Drive, BLD# 107, Lake Bluff, IL 60044 Phone 847-932-4700 Fax 847-932-4701
www.boxenclosures.com



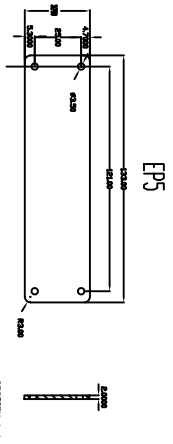
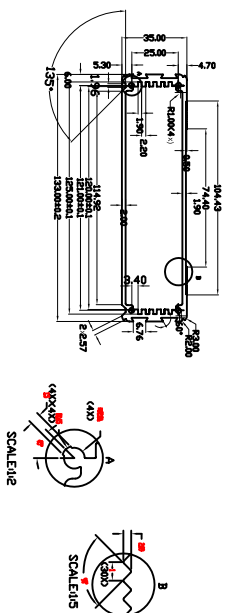
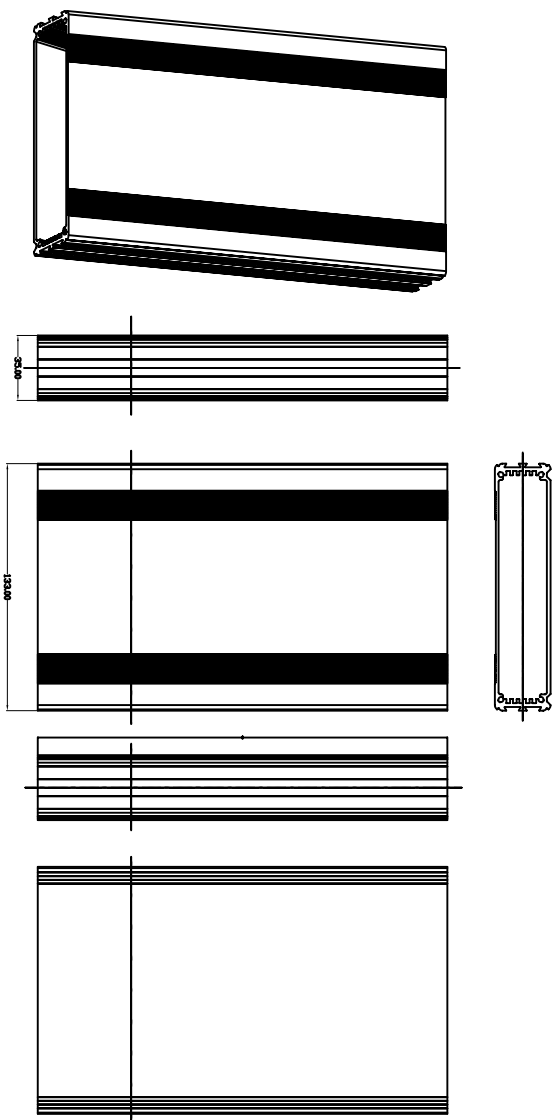
ENCLOSURES & ASSEMBLY SERVICES

BOX ENCLOSURES, INC
 28835 N. HERVEY DRIVE, #114,
 LAKE BLUFF, IL 60044

TEL: 847-932-4700

WWW.BOXENCLOSURES.COM

FAX: 847-932-4701



		ENCLOSURES & ASSEMBLY SERVICES 28835 N. Hervey Drive, Lake Bluff, IL 60044	
Title: B - Frame - Steel Topless 600 X 625 mm		Dwg. No.:	
Material:		Part No.:	
Finish:		Color:	
Proj.:		Dirn. Date:	
TOLERANCE all dimension in mm unless otherwise specified x ±0.20 .x ±0.10 .xx ±0.05 ANGLE ±0.5°		Model:	
		App. Date:	
		Sheet 1 of 1	
		App. Date:	

THIS DRAWING IS THE PROPERTY OF AND MAY CONTAIN PROPRIETARY INFORMATION OWNED BY Box Enclosures, . IT IS PROVIDED UNDER A CONFIDENTIAL RELATIONSHIP FOR A SPECIFIC PURPOSE. THE RECIPIENT AGREES TO USE IT ONLY FOR SUCH PURPOSE AND RETURN IT TO Box Enclosure UPON REQUEST.