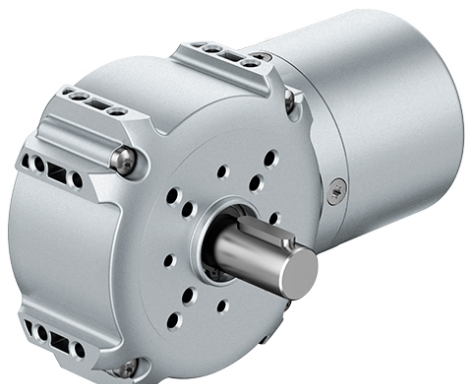


brushless EC motor, external rotor (integr. electr.) with angle gearhead EtaCrown 75

VDC-3-49.15-D00-K4 - EtaCrown 75



Characteristics of the drive solution

Typ	Unit	Value
Order number	-	VG.VDC4915DK4.EC75.1.4
Output power	W	110.0
Output torque	Nm	1.1
Output speed	rpm	985.0
Weight	kg	0.9
Length	mm	152
Ambient temperature	-	-20°C to +80°C
Protection	-	IP 50

Motor

Typ	Unit	Value
Type of motor	-	brushless EC motor, external rotor (integr. electr.)
Motor designation	-	VDC-3-49.15-D00-K4
Voltage	V	48
Output speed	rpm	4000
Nominal power	W	125.0
Rated current	A	3.2
Torque	Ncm	29.8
weight of Motor	kg	0.59

Gearbox

Typ	Unit	Value
Type of gear	-	angle gearhead
name of gearbox	-	EtaCrown 75
No of reduction stages	-	1
Untersetzung	-	4.1
Max. nominal torque	Nm	6.0
Efficiency	-	90%
Output shaft bearing	-	ball bearing
Lubrication	-	maint. free-grease lubricated for life
Gearhead play	-	about 0.55° to 1.1°