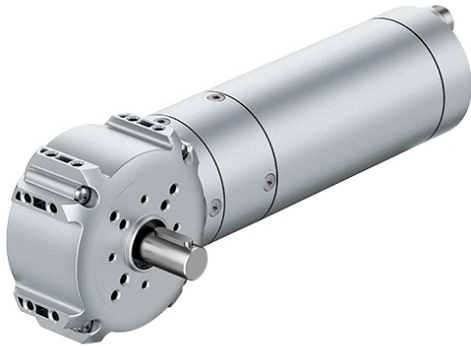


# brushless EC motor, internal rotor with angle gearhead

## EtaCrown 75

ECI-63.60-D00-K4 - EtaCrown 75



### Characteristics of the drive solution

Typ	Unit	Value
Order number	-	VG.ECI6360DK4.EC75.2.33
Output power	W	130.0
Output torque	Nm	10.0
Output speed	rpm	120.0

### Motor

Typ	Unit	Value
Type of motor	-	brushless EC motor, internal rotor
Motor designation	-	ECI-63.60-D00-K4
Voltage	V	48
Output speed	rpm	4000
Nominal power	W	356.0
Rated current	A	8.3
Torque	Ncm	85.0
Operating capacitor	-	no
weight of Motor	kg	1.5

### Gearbox

Typ	Unit	Value
Type of gear	-	angle gearhead

name of gearbox	-	EtaCrown 75
No of reduction stages	-	2
Untersetzung	-	33.3
Max. nominal torque	Nm	10.0
Efficiency	-	81%
Output shaft bearing	-	ball bearing
Lubrication	-	maint. free-grease lubricated for life
Gearhead play	-	about 0.55° to 1.1°