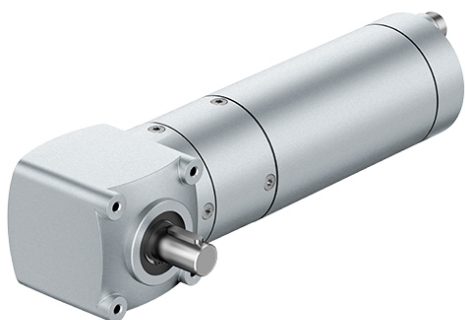


brushless EC motor, internal rotor with angle gearhead

EtaCrownPlus 63

ECI-63.60-D00-K4 - EtaCrownPlus 63



Characteristics of the drive solution

Typ	Unit	Value
Order number	-	VG.ECI6360DK4.ECP63.3.85
Output power	W	200.0
Output torque	Nm	40.0
Output speed	rpm	47.2

Motor

Typ	Unit	Value
Type of motor	-	brushless EC motor, internal rotor
Motor designation	-	ECI-63.60-D00-K4
Voltage	V	48
Output speed	rpm	4000
Nominal power	W	356.0
Rated current	A	8.3
Torque	Ncm	85.0
Operating capacitor	-	no
weight of Motor	kg	1.5

Gearbox

Typ	Unit	Value
Type of gear	-	angle gearhead

name of gearbox	-	EtaCrownPlus 63
No of reduction stages	-	3
Untersetzung	-	84.8
Max. nominal torque	Nm	40.0
Efficiency	-	73%
Output shaft bearing	-	combined sliding / ball bearing
Lubrication	-	maint. free-grease lubricated for life
Gearhead play	-	about 0.7° to 1.2°