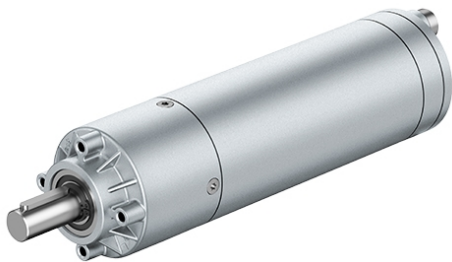


brushless EC motor, internal rotor with planetary gearhead Performax 63

ECI-63.40-B00-K4 - Performax 63



Characteristics of the drive solution

| Typ | Unit | Value |
|---------------|------|-----------------------|
| Order number | - | VG.ECI6340BK4.P63.1.5 |
| Output power | W | 230.0 |
| Output torque | Nm | 2.7 |
| Output speed | rpm | 800.0 |

Motor

| Typ | Unit | Value |
|---------------------|------|------------------------------------|
| Type of motor | - | brushless EC motor, internal rotor |
| Motor designation | - | ECI-63.40-B00-K4 |
| Voltage | V | 24 |
| Output speed | rpm | 4000 |
| Nominal power | W | 251.0 |
| Rated current | A | 12.3 |
| Torque | Ncm | 59.9 |
| Operating capacitor | - | no |
| weight of Motor | kg | 1.15 |

Gearbox

| Typ | Unit | Value |
|--------------|------|--------------------|
| Type of gear | - | planetary gearhead |

| | | |
|------------------------|----|--|
| name of gearbox | - | Performax 63 |
| No of reduction stages | - | 1 |
| Untersetzung | - | 5.0 |
| Max. nominal torque | Nm | 6.9 |
| Efficiency | - | 90% |
| Output shaft bearing | - | combined sliding / ball bearing |
| Lubrication | - | maint. free-grease lubricated for life |
| Gearhead play | - | about 0.7° to 1.2° |