



Features

- Single and dual section control
- Metal shaft styles
- Carbon element
- Center detent option
- Wide range of resistance tapers
- Plain or knurled shaft options
- Linear, audio and reverse audio taper options
- RoHS compliant*

PDB18 Series - 17 mm Rotary Potentiometer

Electrical Characteristics

TaperLinear, audio
Standard Resistance Range
.....1 K ohms to 1 M ohms
Standard Resistance Tolerance±20 %
Residual Resistance1 % max.

Environmental Characteristics

Operating Temperature
.....-10 °C to +50 °C
Power Rating
Linear0.2 watt
Dual Section.....0.125 watt
Audio0.1 watt
Dual Section.....0.06 watt
Maximum Operating Voltage
Linear200 V
Audio150 V
Sliding Noise47 mV max.

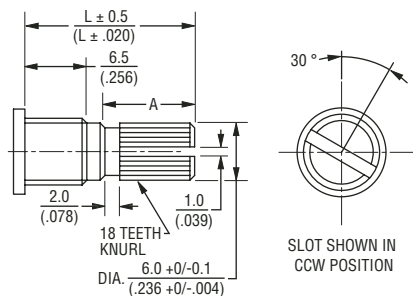
Mechanical Characteristics

Mechanical Angle300 ° ±5 °
Rotational Torque50 to 350 g-cm
Detent Torque.....150 to 500 g-cm
Stop Strength.....5 kg-cm min.
Rotational Life.....15,000 cycles
Soldering Condition
.....260 °C max. within 3 seconds
HardwareOne flat washer and
mounting nut supplied per
potentiometer with bushing

Shaft Styles

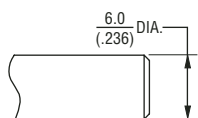
K Type

L	15 (.591)	18 (.709)	20 (.787)	25 (.984)	30 (1.181)
A	6.5 (.256)	6.5 (.256)	11.5 (.453)	14 (.551)	19 (.748)



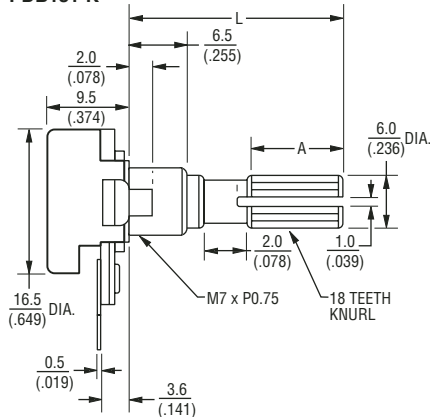
P Type

L	20 (.787)	25 (.984)	30 (1.181)
---	--------------	--------------	---------------

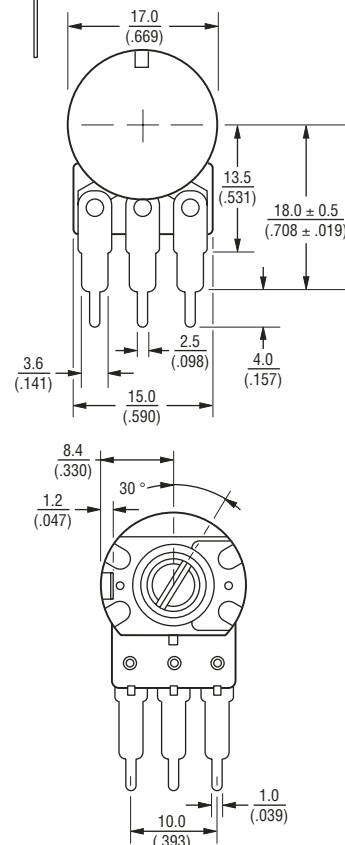
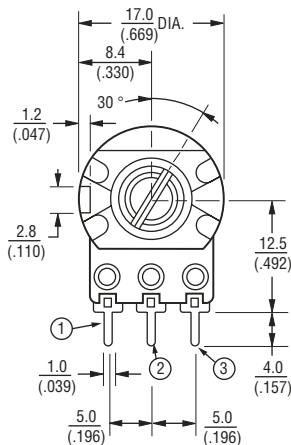
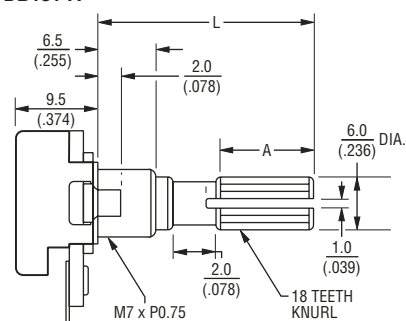


Product Dimensions

PDB181-K

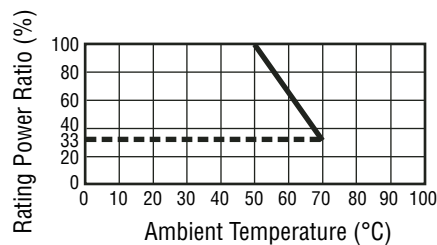


PDB181-A

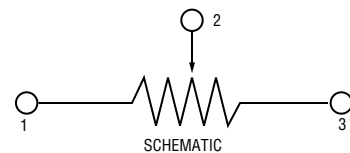


DIMENSIONS ARE: $\frac{\text{MM}}{\text{(INCHES)}}$

Derating Curve



SHAFT SHOWN IN CCW POSITION



*RoHS Directive 2002/95/EC Jan 27 2003 including Annex. Specifications are subject to change without notice. Customers should verify actual device performance in their specific applications.

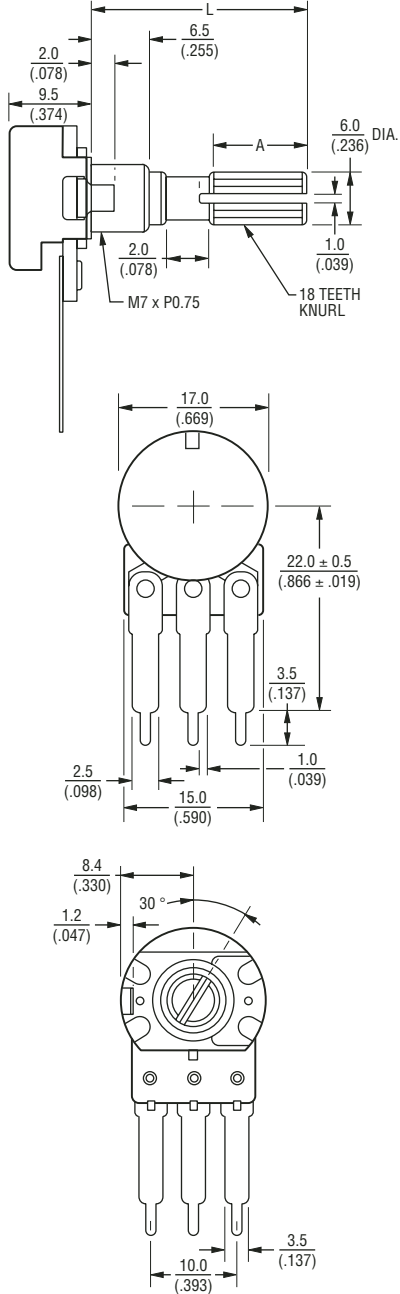
Applications

- Audio/TV sets
- Car radio
- Amplifiers/mixers/drum machines/synthesizers
- PCs/monitors
- Appliances

PDB18 Series - 17 mm Rotary Potentiometer **BOURNS®**

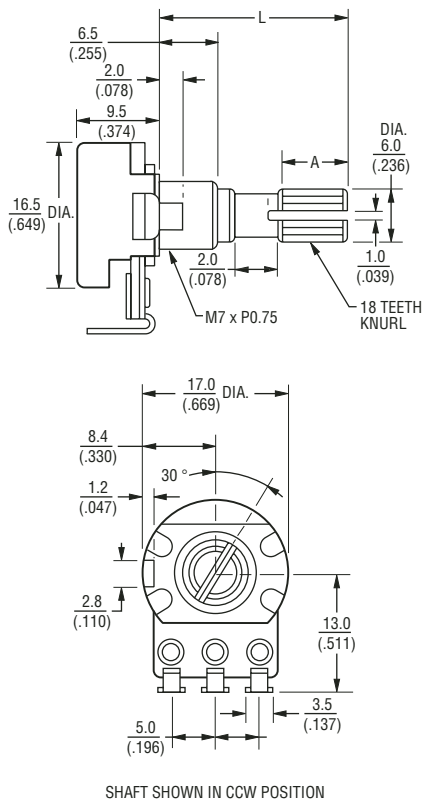
Product Dimensions

PDB181-B



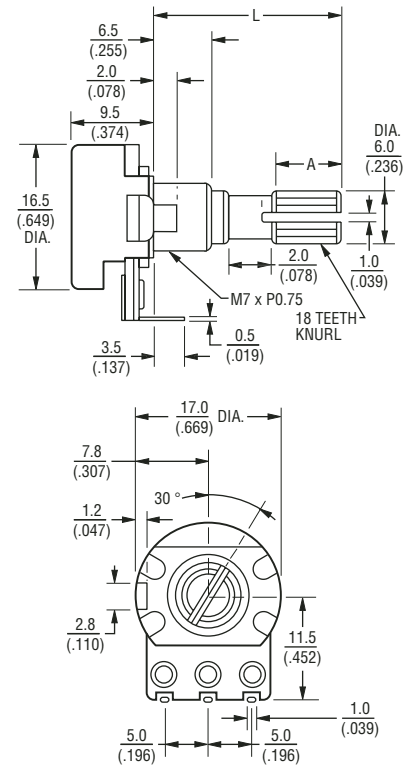
SHAFT SHOWN IN CCW POSITION

PDB181-E



SHAFT SHOWN IN CCW POSITION

PDB181-D



SHAFT SHOWN IN CCW POSITION

DIMENSIONS ARE: $\frac{\text{MM}}{\text{(INCHES)}}$

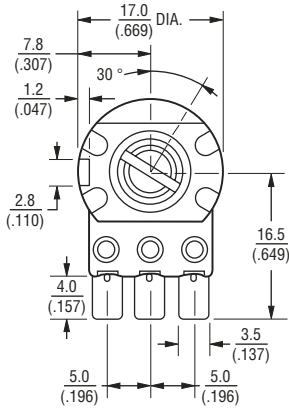
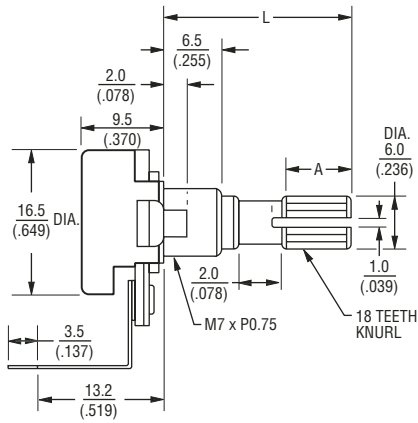
Specifications are subject to change without notice. Customers should verify actual device performance in their specific applications.

PDB18 Series - 17 mm Rotary Potentiometer

BOURNS®

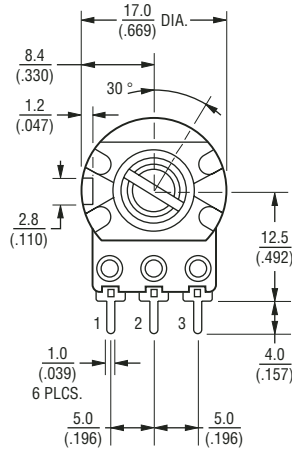
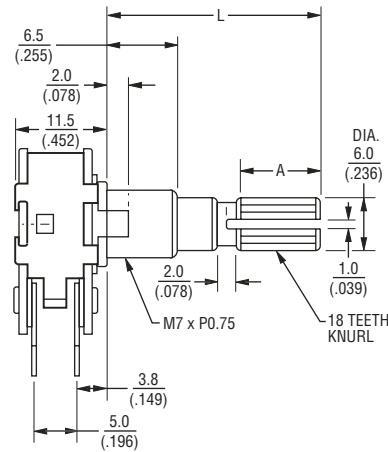
Product Dimensions

PDB181-P

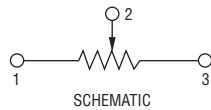


SHAFT SHOWN IN CCW POSITION

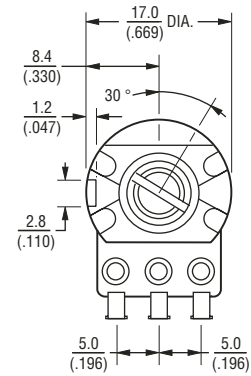
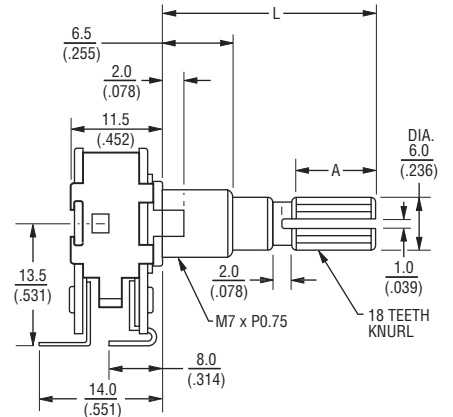
**PDB182-K
Dual Gang**



SHAFT SHOWN IN CCW POSITION



**PDB182-E
Dual Gang**



SHAFT SHOWN IN CCW POSITION

DIMENSIONS ARE: $\frac{\text{MM}}{\text{(INCHES)}}$

