

## SC 5.9 8 OHM

**Art. No. 8006**

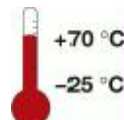
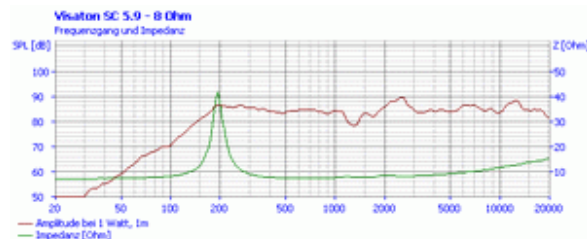
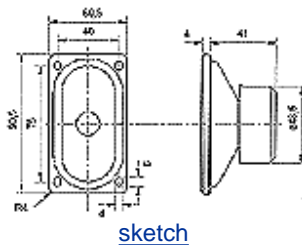
**Magnetically shielded oval fullrange driver** with a powerful magnetic drive, good [efficiency](#) and a very balanced [frequency response](#). Due to the very good highrange reproduction and the small size any non-spacious application in the field of multimedia and Dolby [Surround](#) are possible. The SC 5.9 can furthermore be used as replacement part for internal TV speakers.

**Typical applications:**

- Multimedia systems
- Video monitoring screens
- TVs
- Computer terminals
- Control speaker for electronic devices

**Attributes:**

- Moisturised [cone](#)
- Metal basket
- Magnetically shielded

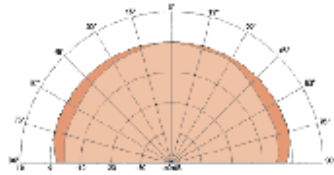


**Technical Data:**

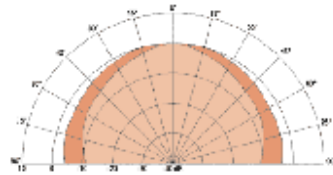
Rated power	10 W
Maximum power	15 W
Nominal impedance Z	8 Ohm
Frequency response	130–20000 Hz
Mean sound pressure level	84 dB (1 W/1 m)
Maximum cone displacement	3 mm
Resonance frequency $f_s$	193 Hz
Magnetic induction	0,9 T
Magnetic flux	120 $\mu$ Wb
Height of front pole-plate	3 mm
Voice coil diameter	14 mm
Height of winding	4 mm
Cutout diameter	43 x 82 mm (oval)
Net weight	0,214 kg
D.C. resistance $R_{dc}$	7,0 Ohm
Mechanical Q factor $Q_{ms}$	7,52
Electrical Q factor $Q_{es}$	1,5
Total Q factor $Q_{ts}$	1,25
Equivalent volume $V_{as}$	0,4 l
Effective piston area $S_d$	26,5 cm <sup>2</sup>

Dynamically moved mass Mms	1,5 g
Force factor Bxl	2,5 T m
Inductance of the voice coil L	0,4 mH
Heat resistance	-25 ... 70 °C

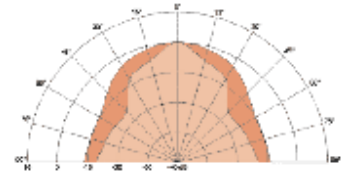
Similar Products	
<a href="#">FR 9.15 4 OHM</a>	<a href="#">SC 4.7 ND 4 OHM</a>
<a href="#">SC 4.7 ND 8 OHM</a>	<a href="#">SC 5.9 ND 4 OHM</a>
<a href="#">SC 5.9 ND 8 OHM</a>	<a href="#">SL 713 4 OHM</a>



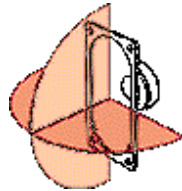
[radiation pattern 2000 Hz](#)



[radiation pattern 5000 Hz](#)



[radiation pattern 10000 Hz](#)



[radiation pattern](#)