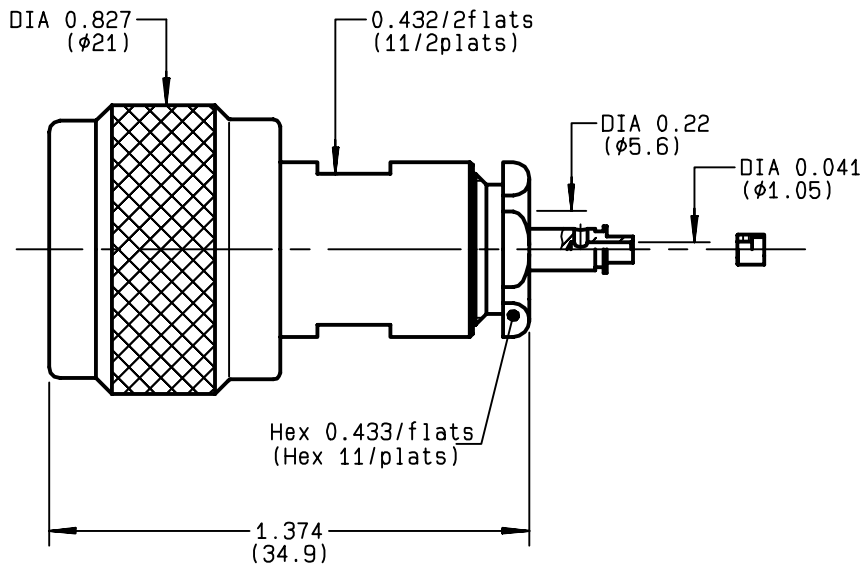


**STRAIGHT PLUG CLAMP TYPE  
CABLE 5/50 S+D**

**R161.010.000**  
**SERIES N**



|                                 |                                  |   |
|---------------------------------|----------------------------------|---|
| NOMINAL IMPEDANCE               | <b>50</b> Ω                      | CABLES : <b>KX 15</b><br><b>KX 23</b><br><b>RG 141</b><br><b>RG 142</b><br><b>RG 142 FTX</b><br><b>RG 223</b><br><b>RG 400</b><br><b>RG 58</b>  |
| FREQUENCY RANGE                 | <b>0-11</b> GHz                  |   |
| TEMPERATURE RATING              | <b>-55/+155</b> °C               |   |
| V.S.W.R                         | <b>1.30</b> + x F(GHz)Maxi       |   |
| RF INSERTION LOSS               | <b>0.048</b> √F(GHz) dB Maxi     |   |
| VOLTAGE RATING                  | <b>850</b> Veff Maxi             |   |
| DIELECTRIC WITHSTANDING VOLTAGE | <b>1500</b> Veff Mini            |   |
| INSULATION RESISTANCE           | <b>5000</b> MΩMini               |   |
| HERMETIC SEAL                   | <b>NA</b> Atm.cm <sup>3</sup> /s |   |
| LEAKAGE (pressurized only)      | <b>NA</b>                        |   |
| MECHANICAL DURABILITY           | <b>500</b> Cycles                | OTHERS CHARACTERISTICS<br><br>CABLE RETENTION <b>150</b> N Mini<br>CENTER CONTACT RETENTION<br>Axial force - mating end <b>27</b> N Mini<br>Axial force - opposite end <b>27</b> N Mini<br>Torque <b>NA</b> cm.N Mini<br>RECOMMENDED TORQUES<br>Mating <b>130</b> cm.N<br>Panel nut <b>NA</b> cm.N<br>Clamp nut <b>450</b> cm.N |
| WEIGHT                          | <b>33.5</b> gr                   |   |
| SPECIFICATION                   |                                  |   |

| CONNECTOR PARTS | MATERIALS       | FINISH                 | (all values are given )<br>in micrometers |
|-----------------|-----------------|------------------------|---|
| BODY            | BRASS           | BBR 2                  |   |
| OUTER CONTACT   | BRASS           | BBR 2                  |   |
| CENTER CONTACT  | BRASS           | GOLD 0.5 OVER NICKEL 2 |   |
| INSULATOR       | PTFE            | -                      |   |
| GASKET          | SILICONE RUBBER | -                      |   |
| OTHERS PIECES   | BRASS           | BBR 2                  |   |

|                         |                                    |                                      |
|-------------------------|------------------------------------|--------------------------------------|
| ISSUE<br><b>0306F01</b> | CREATION DATE<br><b>12/10/1992</b> | FILE PART-NUMBER<br><b>EPC 96-07</b> |
|-------------------------|------------------------------------|--------------------------------------|



BONOMINI

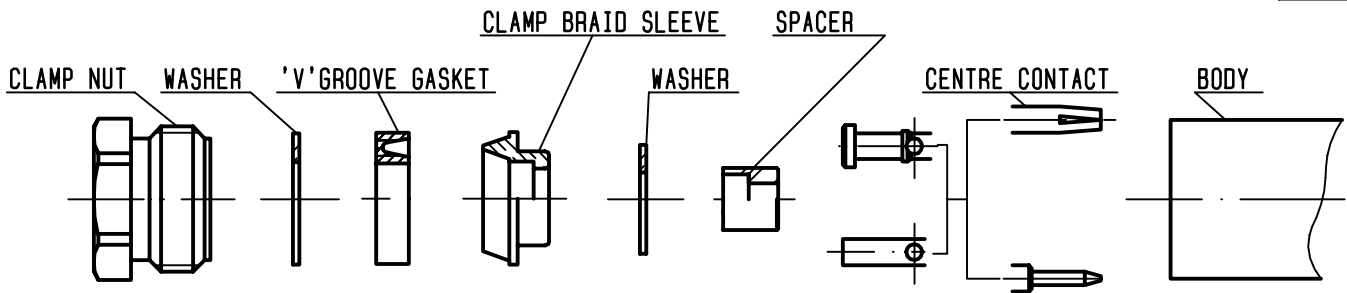
The information given here is subject to change without notice.  
Design changes may be in order to improve the product .

*Connect to the future*



**R161.010.000**

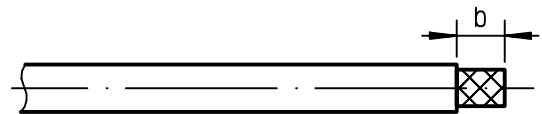
ISSUE **0306F01** SERIES **N**



①

Strip the cable .

-  
-  
-



| Stripping | a     | b     | c | d | e     |
|-----------|-------|-------|---|---|-------|
| inch      | 0.157 | 0.295 | 0 | 0 | 0.079 |
| mm        | 4     | 7.5   |   |   | 2     |

②

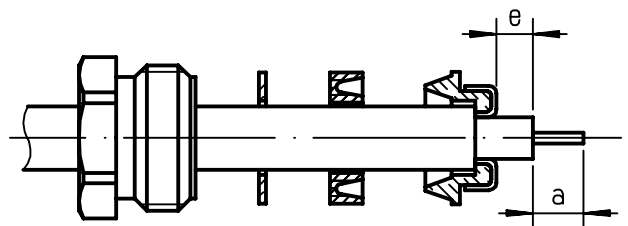
Slide the clamp nut , the washer and the 'V'groove gasket onto the cable .

Slide clamp braid sleeve over braid .

Fold back braid and trim off surplus braid .

Trim back dielectric as shown .

-

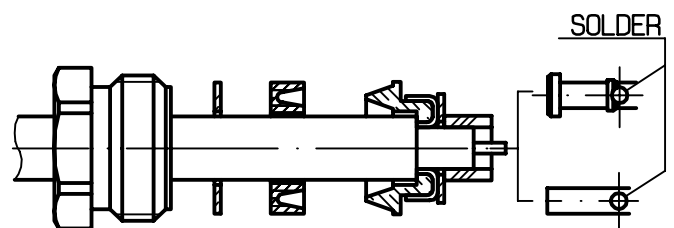


③

Slide the washer and the spacer onto the dielectric .

Solder the cable inner conductor into centre contact .

-  
-  
-

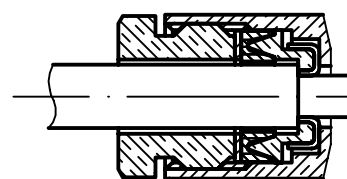


④

Screw sub-assembly into the connector body .

( recommended coupling torque 39.83 in.lb )

-  
-



Hex. : 0.433/flats