

OLED DISPLAY MODULE

Product Specification

CUSTOMER	Standard	
PRODUCT NUMBER	DD-160128FC-1A	
CUSTOMER APPROVAL		Date

INTERNAL APPROVALS		
Product Mgr	Doc. Control	Electr. Eng
Bruno Recaldini	Anthony Perkins	Bazile Peter
Date: 10Jul06	Date: 10Jul06	Date: 10Jul06

- Approval for Specification only
- Approval for Specification and Sample

TABLE OF CONTENTS

1	MAIN FEATURES	4
2	MECHANICAL SPECIFICATION.....	5
2.1	MECHANICAL CHARACTERISTICS	5
2.2	MECHANICAL DRAWING	6
3	ELECTRICAL SPECIFICATION.....	7
3.1	ABSOLUTE MAXIMUM RATINGS	7
3.2	ELECTRICAL CHARACTERISTICS	7
3.3	INTERFACE PIN ASSIGNMENT	8
3.4	BLOCK DIAGRAM	10
3.5	TIMING CHARACTERISTICS	11
4	OPTICAL SPECIFICATION.....	15
4.1	OPTICAL CHARACTERISTICS.....	15
5	FUNCTIONAL SPECIFICATION	16
5.1	COMMANDS	16
5.2	POWER UP/DOWN SEQUENCE.....	16
5.3	RESET CIRCUIT.....	16
5.4	ACTUAL APPLICATION EXAMPLE.....	17
6	PACKAGING AND LABELLING SPECIFICATION.....	20
6.1	LABELLING & MARKING.....	20
7	QUALITY ASSURANCE SPECIFICATION	21
7.1	CONFORMITY	21
7.2	DELIVERY ASSURANCE	21
7.3	DEALING WITH CUSTOMER COMPLAINTS	25
8	RELIABILITY SPECIFICATION	26
8.1	RELIABILITY TESTS	26
8.2	LIFE TIME.....	26
9	HANDLING PRECAUTIONS.....	27

Product No.	DD-160128FC-1A	REV. A

Page	2 / 27
------	--------

REVISION RECORD

Rev.	Date	Page	Chapt.	Comment	ECR no.
A	10-Jul-06			First Issue	

Product No.	DD-160128FC-1A	REV. A

Page	3 / 27
------	--------

1 MAIN FEATURES

ITEM	CONTENTS
Display Format	160 (RGB) x 128 Dots
Overall Dimensions	Glass 35.8 x 30.8 x 1.7 mm
Colour	262,144 Colour
Active Area	28.78 x 23.024 mm
Viewing Area	30.78 x 25.02 mm
Display Mode	Passive Matrix (1.45")
Driving Method	1/128 duty
Driver IC	SEPS525F
Operating temperature	-20 ~ +70
Storage temperature	-30 ~ +80

Product No.	DD-160128FC-1A	REV. A

Page	4 / 27
------	--------

2 MECHANICAL SPECIFICATION

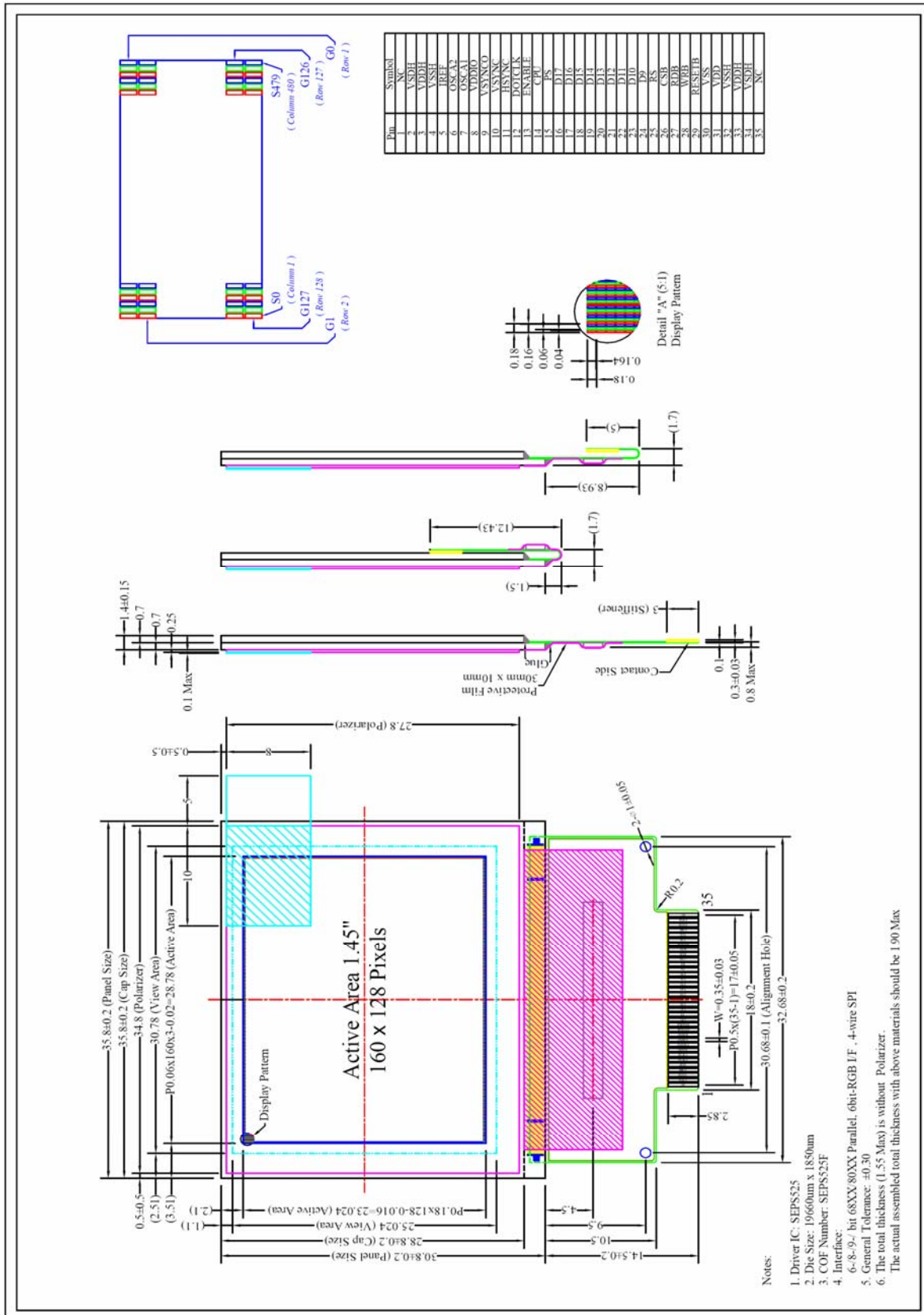
2.1 MECHANICAL CHARACTERISTICS

ITEM	CHARACTERISTIC	UNIT
Display Format	160 (RGB) x 128	Dots
Overall Dimensions	35.80 x 30.80 x 1.7	mm
Viewing Area	30.78 x 25.02	mm
Active Area	28.78 x 23.024	mm
Dot Size	0.04 x 0.164	mm
Dot Pitch	0.06 x 0.18	mm
Weight	3.6	g
IC Controller/Driver	SEPS525F (COF)	

Product No.	DD-160128FC-1A	REV. A

Page	5 / 27
------	--------

2.2 MECHANICAL DRAWING



Product No.	DD-160128FC-1A	REV. A

Page	6 / 27
------	--------

3 ELECTRICAL SPECIFICATION

3.1 ABSOLUTE MAXIMUM RATINGS

VSS = 0 V, Ta = 25 °C

Item	Symbol	Min	Max	Unit	Note
Power Supply Voltage	V _{DD-VSS}	-0.3	4	V	Note 1, 2
Supply Voltage for I/O Pins	V _{DDIO}	-0.3	4	V	
OLED Power Supply	V _{DDH}	-0.3	19.5	V	
Operating Temperature	Top	-30	70	°C	
Storage Temperature	Tst	-40	80	°C	
Static Electricity	Be sure that you are grounded when handling displays.				

Note 1: All the above voltages are on the basis of “GND=0V”.

Note 2: When this module is used beyond the above absolute maximum ratings, permanent damage to the module may occur. Also for normal operations it’s desirable to use this module under the conditions according to Section 3.2 “Electrical Characteristics”. If this module is used beyond these conditions the module may malfunction and the reliability could deteriorate.

3.2 ELECTRICAL CHARACTERISTICS

Characteristics	Symbol	Conditions	Min	Typ	Max	Unit
Supply Voltage	V _{DD}		2.6	2.8	3.3	V
Supply Voltage x I/O pins	V _{DDIO}		1.6	2.8	3.3	V
Driver Supply Voltage	V _{CC}	Note 3	-	13	-	V
High Level Input	V _{IH}		0.8xV _{DD}	-	V _{DDIO}	V
Low Level Input	V _{IL}		0	-	0.4	V
High Level Output	V _{OH}		V _{DD} -0.4	-	-	V
Low Level Output	V _{OL}		-	-	0.4	V
V _{DD} Current	I _{DD}	Note 1,2	-	2.5	3.5	mA
V _{CC} Current	I _{CC}	Note 1	-	16	19	mA
		Note 2	-	27	32	mA

Note 1 V_{DD} = 2.8V, V_{CC} = 13V, Software initial setting follow chapter 5.4, 50% Display area turned on.

Note 2 V_{DD} = 2.8V, V_{CC} = 13V, Software initial setting follow chapter 5.4, 100% Display area turned on

Note 3 Brightness (Lbr) and driver supply voltage (VCC) could be changed to customer request.

3.3 INTERFACE PIN ASSIGNMENT

No.	Symbol	I/O	Function						
1	N.C.	-	<i>No Connection</i>						
2	VSDH	I	<i>Data Driver Ground</i>						
3	VDDH	I	<i>Data, Scan Driver Power supply</i>						
4.	VSSH	I	<i>Scan Driver Ground</i>						
5	IREF	I/O	<i>Current reference for brightness Adjustment</i> Connect 70KΩ Resistor to VSS						
6	OSCA2	O	<i>Fine Adjustment for Oscillation</i> Connect a 10KΩ Resistor between OSCA1 and OSCA2. OSCA1 is selected for External clock mode.						
7	OSCA1	I							
8	VDDIO	I	<i>MPU I/F PAD Power Supply</i>						
9	VSYNCO	O	<i>RGB Mode functional Pins</i> VSYNCO : Vertical Sync Output VSYNC: Vertical Sync Input HSYNC : Horizontal Sync Input COTCLK : Dot Clock Input ENNABLE : Video Enable Input						
10	VSYNC	I							
11	HSYNC	I							
12	COTCLK	I							
13	ENABLE	I							
14	CPU	I							
15	PS	I	<i>Select CPU type</i> Low: 80-Series High: 68-Series						
16	D17	I/O	<i>Select Parallel/Serial Interface</i> Low: Serial High: Parallel						
17	D16								
18	D15								
19	D14								
20	D13								
21	D12								
22	D11								
23	D10								
24	D9								
			<i>Host Data Input/Output Bus.</i> These pins are 9-bit bi-directional data bus to be connected with MCU data bus. <table border="1" style="margin-top: 10px;"> <thead> <tr> <th>PS</th> <th>Description</th> </tr> </thead> <tbody> <tr> <td>1</td> <td>8-bit Bus: D17 to D10 9-bit Bus: D17 to D9</td> </tr> <tr> <td>0</td> <td>D[17] SCL: Synchronous Clock Input D[16] SDI: Serial Data Input D[15] SDO: Serial Data Output</td> </tr> </tbody> </table>	PS	Description	1	8-bit Bus: D17 to D10 9-bit Bus: D17 to D9	0	D[17] SCL: Synchronous Clock Input D[16] SDI: Serial Data Input D[15] SDO: Serial Data Output
PS	Description								
1	8-bit Bus: D17 to D10 9-bit Bus: D17 to D9								
0	D[17] SCL: Synchronous Clock Input D[16] SDI: Serial Data Input D[15] SDO: Serial Data Output								

Product No.	DD-160128FC-1A	REV. A

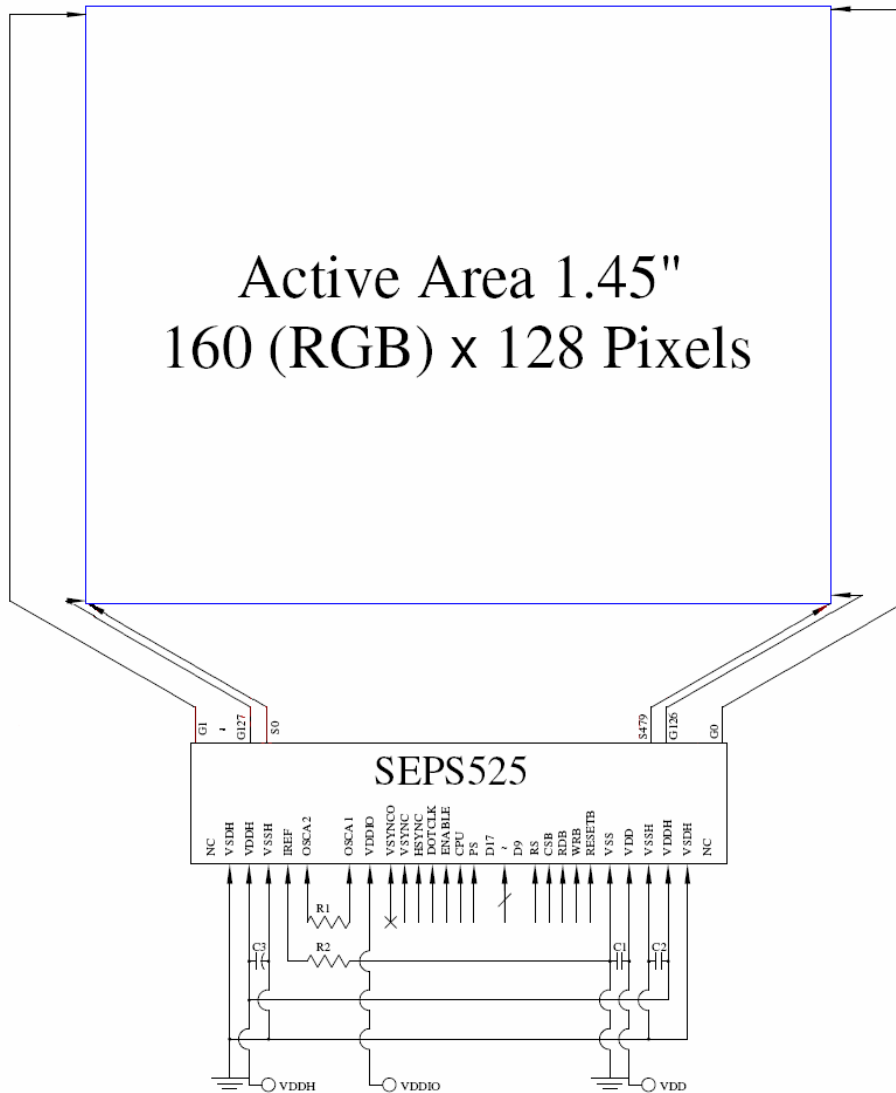
Page	8 / 27
------	--------

25	RS	I	<i>Selects Data/Command</i> Low: Command High: Parameter/data
26	CSB	I	<i>Chip Select</i> Low: SEPS525 is selected and can be accessed High: SEPS525 is not selected and cannot be accessed
27	RDB	I	<i>Read/Write Select or Write.</i> 80-System bus interface: Read strobe signal(Active Low) 68-System bus interface: Bus enable strobe (Active High) When serial mode, fix this to VDD or VSS Level
28	WRB	I	<i>Write or Read/Write Select</i> 80-System bus interface: Write strobe signal(active Low) 68-System bus interface: Read/write select. Low: Write High: Read When serial mode, fix this to VDD or VSS Level
29	RESETB	I	<i>Chip Reset</i> Reset SEPS225 (Active Low)
30	VSS	I	<i>Power Supply Ground</i>
31	VDD	I	<i>Logic Power Supply</i>
32	VSSH	I	<i>Scan Driver Ground</i>
33	VDDH	I	<i>Data, Scan Driver Power supply</i>
34	VSDH	I	<i>Data Driver Ground</i>
35	N.C.	-	<i>No Connection</i>

Product No.	DD-160128FC-1A	REV. A

Page	9 / 27
------	--------

3.4 BLOCK DIAGRAM



MCU Interface Selection: PS and CPU

Pins connected to MCU interface: D17~D9, RS, CSB, RDB, WRB, RESETB, ENABLE, DOTCLK, HSYNC and VSYNC

When RGB mode is used, D[17:12], ENABLE, DOTCLK, HSYNC and VSYNC should follow the 6-bit RGB interface instruction. Otherwise these four inputs ENABLE, DOTCLK, HSYNC and VSYNC should be tied to VDDIO Level.

- C1: 1 μ F
- C2, C3: 4.7 μ F
- R1: 10 k Ω
- R2: 68 k Ω

Product No.	DD-160128FC-1A	REV. A

Page	10 / 27
------	---------

3.5 TIMING CHARACTERISTICS

3.5.1 AC CHARACTERISTICS

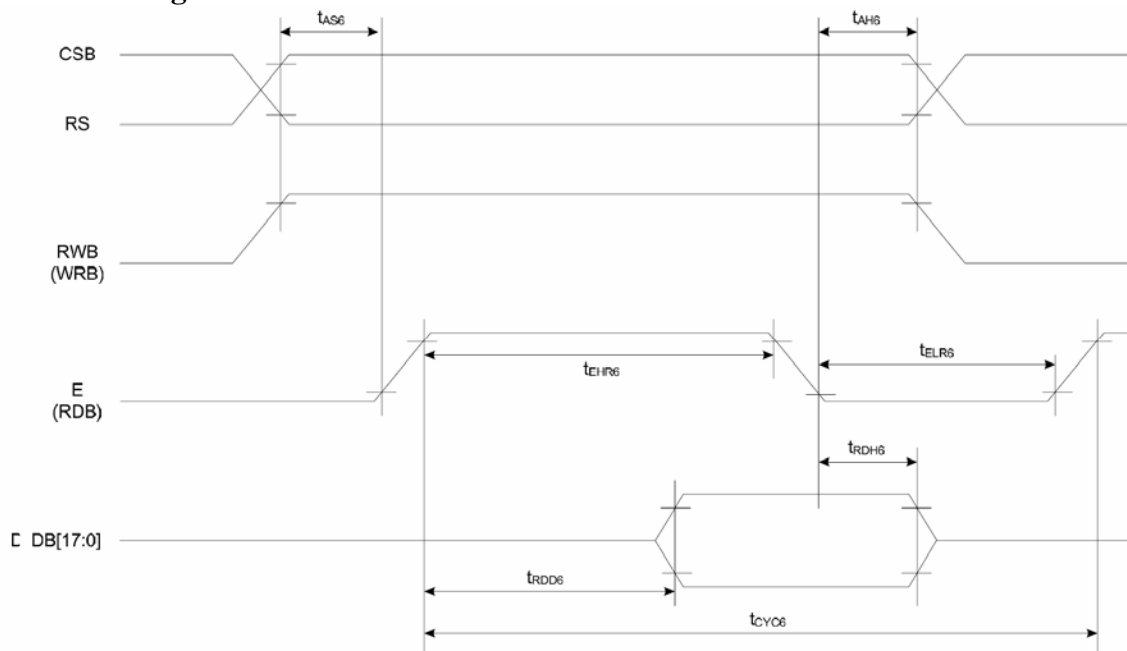
3.5.1.1 6800-Series MPU Parallel Interface Timing Characteristics

VDD = 2.8V, Ta = 25°C

Characteristics	Symbol	Min	Max	Unit	Unit
Write Timing					
Address hold timing	tAH6	5	-	nS	CSB
Address setup timing	tAS6	5	-	nS	RS
System cycle timing Write	tCYC6	100	-	nS	E
“L” pulse width Write	tELW6	45	-	nS	E
“H” pulse width	tEHW6	45	-	nS	E
Data setup timing	tDS6	40	-	nS	DB[17:0]
Data hold timing	tDH6	10	-	nS	DB[17:0]
Read Timing					
Address hold timing	tAH6	10	-	nS	CSB
Address setup timing	tAS6	10	-	nS	RS
System cycle timing Write	tCYC6	200	-	nS	E
“L” pulse width Write	tELW6	90	-	nS	E
“H” pulse width	tEHW6	90	-	nS	E
Data setup timing (CL= 15pF)	tDS6	0	70	nS	DB[17:0]
Data hold timing (CL= 15pF)	tDH6	0	70	nS	DB[17:0]

- All the timing should be based on 10% and 90% of V_{DD}.

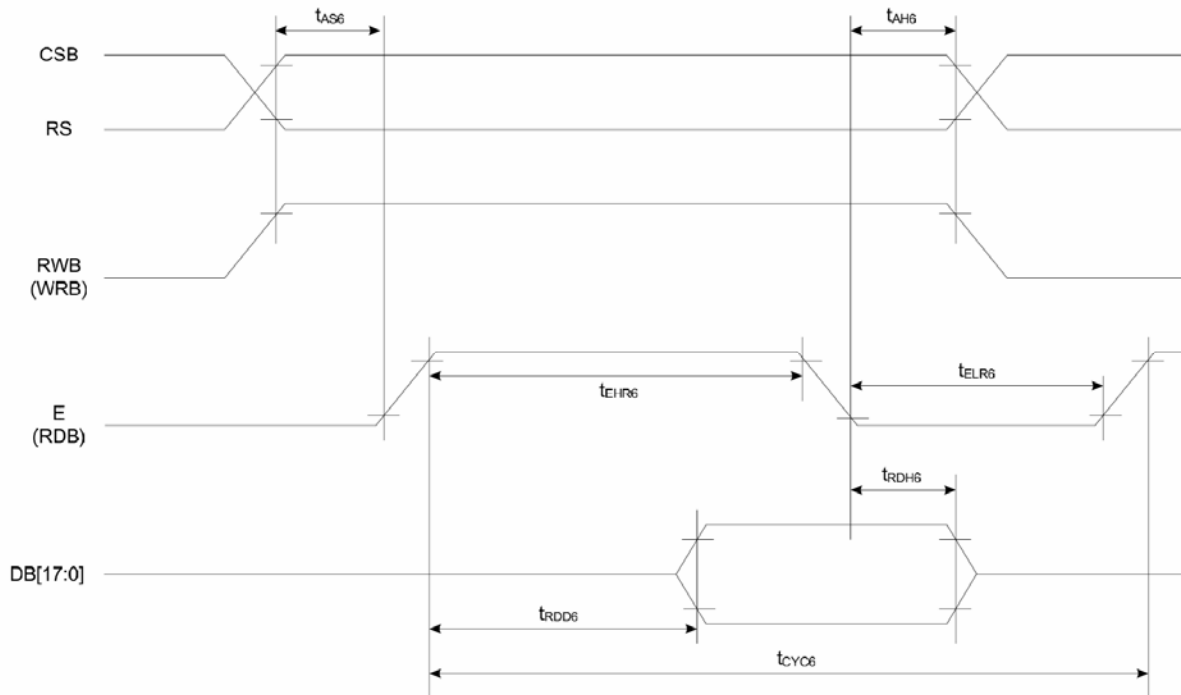
Write Timing



Product No.	DD-160128FC-1A	REV. A

Page	11 / 27
------	---------

Read Timing



3.5.1.2 8080-Series MPU Parallel Interface Timing Characteristics

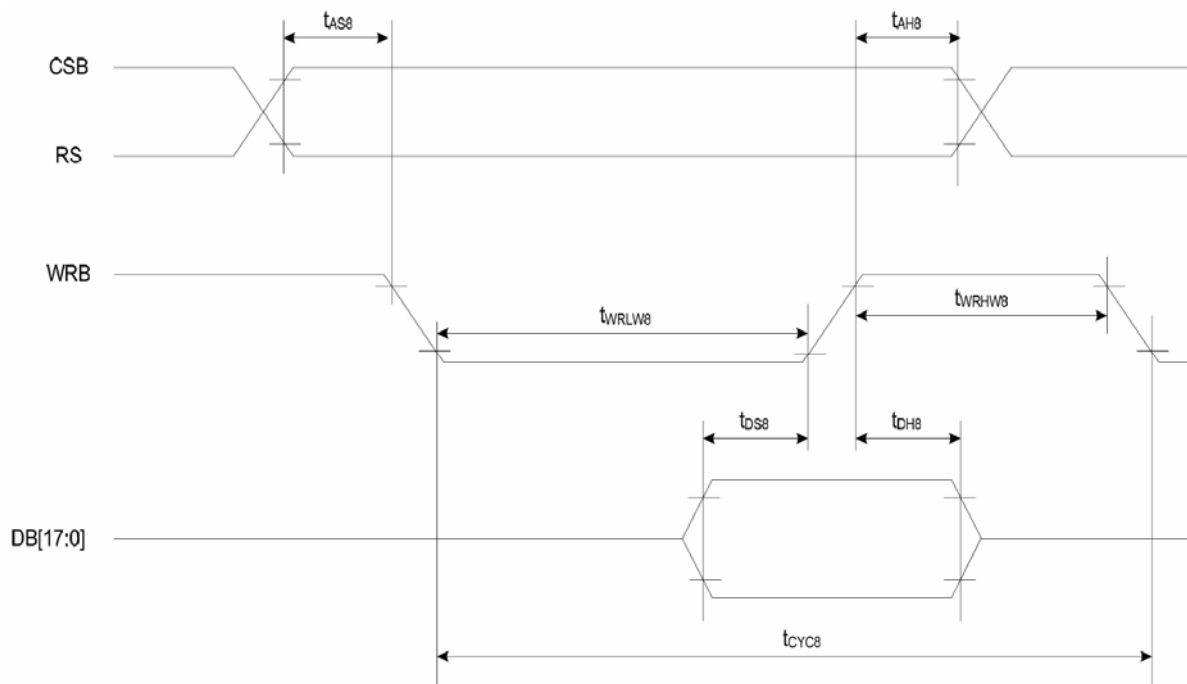
Characteristics	Symbol	Min	Max	Unit	Unit
Write Timing					
Address hold timing	tAH6	5	-	nS	CSB
Address setup timing	tAS6	5	-	nS	RS
System cycle timing Write	tCYC6	100	-	nS	WRB
“L” pulse width Write	tELW6	45	-	nS	WRB
“H” pulse width	tEHW6	45	-	nS	WRB
Data setup timing	tDS6	30	-	nS	DB[17:0]
Data hold timing	tDH6	10	-	nS	DB[17:0]
Read Timing					
Address hold timing	tAH6	10	-	nS	CSB
Address setup timing	tAS6	10	-	nS	RS
System cycle timing Write	tCYC6	200	-	nS	RDB
“L” pulse width Write	tELW6	90	-	nS	RDB
“H” pulse width	tEHW6	90	-	nS	RDB
Data setup timing (CL= 15pF)	tDS6	0	60	nS	DB[17:0]
Data hold timing (CL= 15pF)	tDH6	0	60	nS	DB[17:0]

*** All the timing should be based on 10% and 90% of V_{DD}**

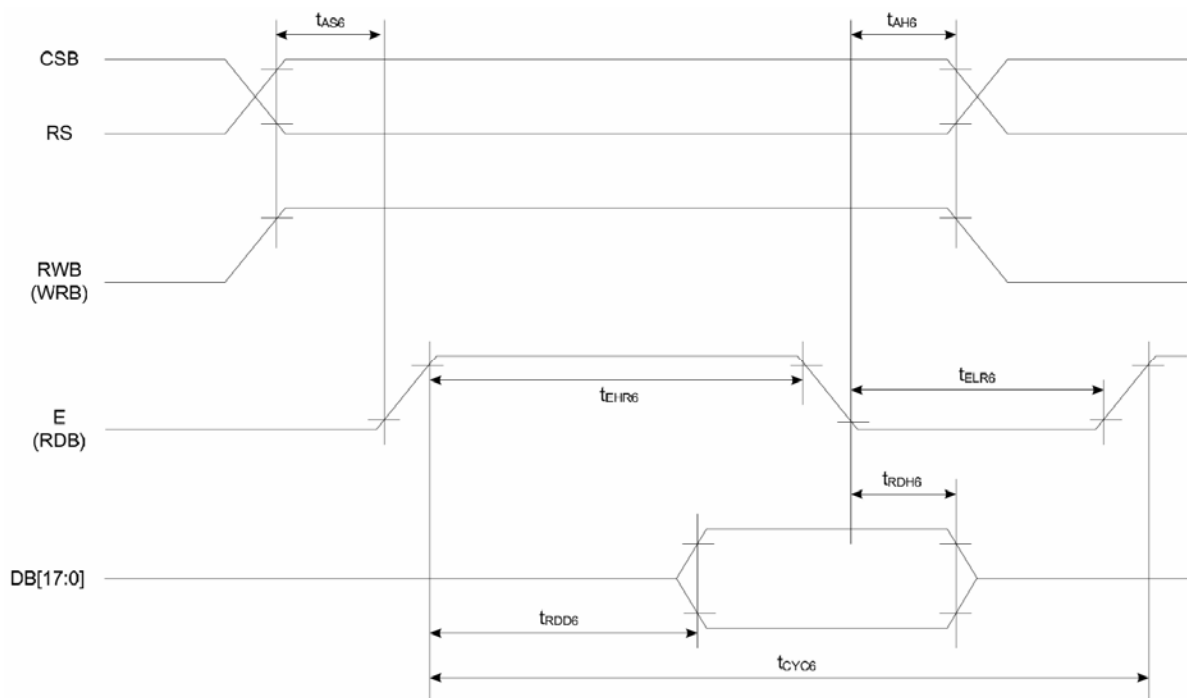
Product No.	DD-160128FC-1A	REV. A

Page	12 / 27
------	---------

Write Timing



Read timing



Product No.	DD-160128FC-1A	REV. A
-------------	----------------	--------

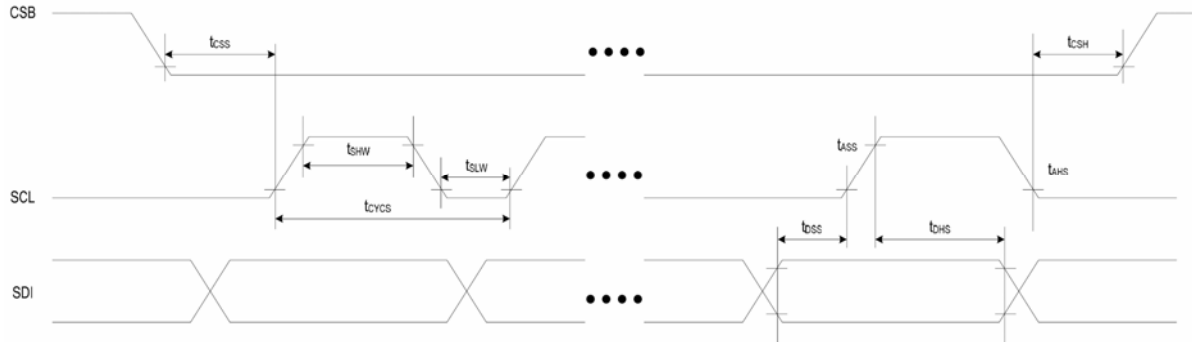
Page	13 / 27
------	---------

3.5.1.3 Serial Interface Timing Characteristics

ITEM	SYMBOL	MIN	MAX	UNIT	PORT
Serial clock cycle SCL	tCYCS	60	-	nS	SCL
“H” pulse width SCL	tSHW	25			
“L” pulse width	tSLW	25			
Data setup timing Data	tDSS	25	-	nS	SDI
Hold timing	tDHS	25			
CSB-SCL timing	tCSS	25	-	nS	CSB
CSB-hold timing	tCSH	25			

*** All the timing should be based on 10% and 90% of V_{DD}**

Serial Interface Timing



4 OPTICAL SPECIFICATION

4.1 OPTICAL CHARACTERISTICS

Characteristics	Symbol	Condition	Min	Typ	Max	Unit
Brightness(White)	L _{br}	Display Average Note 1	75	100	-	cd/m ²
C.I.E.(White)	(X)		0.25	0.29	0.33	-
	(Y)		0.29	0.33	0.37	
C.I.E.(Red)	(X)		0.57	0.61	0.65	-
	(Y)		0.32	0.36	0.40	
C.I.E.(Green)	(X)		0.26	0.30	0.34	-
	(Y)		0.60	0.64	0.68	
C.I.E.(Blue)	(X)		0.10	0.14	0.18	-
	(Y)		0.15	0.19	0.23	
Dark Room Contrast	CR		-	>1000:1	-	-
Viewing Angle			>160	-	-	degree

Optical measurement, follow the software initial setting on chapter 5.4

Note 1: Brightness (L_{br}) and driver supply voltage (VCC) could be changed to customer request.

Product No.	DD-160128FC-1A	REV. A

Page	15 / 27
------	---------

5 FUNCTIONAL SPECIFICATION

5.1 COMMANDS

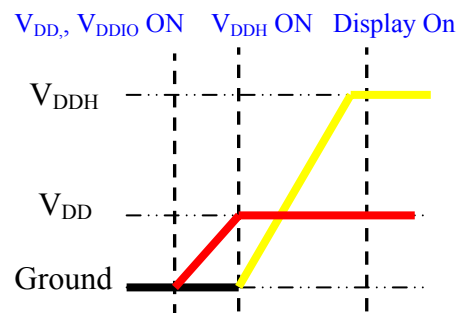
Please refer to the Technical Manual for the SEPS525F

5.2 POWER UP/DOWN SEQUENCE

To protect panel and extend the panel lifetime, the driver IC power up/down routine should include a delay period between high voltage and low voltage power sources during turn on/off. It gives the panel enough time to complete the action of charge and discharge before/after the operation.

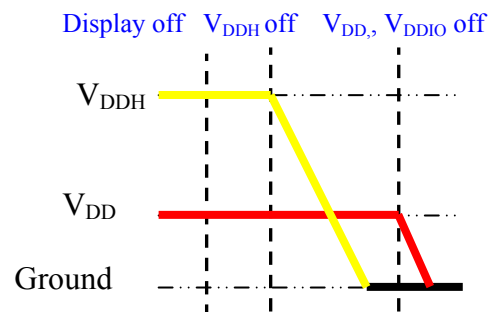
5.2.1 POWER UP SEQUENCE

1. Power up V_{DD} & V_{DDIO}
2. Send Display off command
3. Clear Screen
4. Power up V_{DDH}
5. Delay 100ms (When V_{DD} & V_{DDIO} is stable)
6. Send Display on command



5.2.2 POWER DOWN SEQUENCE

1. Send Display off command
2. Power down V_{DDH}
3. Delay 100ms
(When V_{DDH} reach 0 and panel is completely discharges)
4. Power down V_{DD} & V_{DDIO}



5.3 RESET CIRCUIT

When RESETB input is low, the chip is initialized with the following status:

1. Frame frequency: 90Hz
2. OSC: internal OSC
3. Internal OSC: ON
4. DDRAM write horizontal address: MX1 = 00h, MX2 = 9Fh
5. DDRAM write vertical address: MY1 = 00h, MY2 = 7Fh
6. Display data RAM write: HC = 1, VC = 1, HV = 0
7. RGB data swap: OFF
8. Row scan shift direction: G0, G1, ..., G126, G127
9. Column data shift direction: S0, S1, ..., S478, S479
10. Display ON/OFF: OFF
11. Panel display size: FX1 = 00h, FX2 = 9Fh, FY1 = 00h, FY2 = 7Fh
12. Display data RAM read column/row address: FAC = 00h, FAR = 00h
13. Pre-charge time(R/G/B): 0 clock
14. Pre-charge current(R/G/B): 0 uA
15. Driving current(R/G/B): 0 uA

Product No.	DD-160128FC-1A	REV. A

Page	16 / 27
------	---------

5.4 ACTUAL APPLICATION EXAMPLE

Initial Code:

```

//OSC control
//EXPORT1 internal clock and OSC operates with external resiste
  Write_Register(0x02);
  Write_Parameter(0x01);

//REDUCE_CURRENT
//Reduced driving current : normal
//Power save mode:normal
  Write_Register(0x04);
  Write_Parameter(0x00);

//CLOCK_DIV
//OSC frequency setting : 90Hz
//Display frequency divide ration:1
  Write_Register(0x03);
  Write_Parameter(0x30);

//REF→Reference volt. controlled by External resister
//→RGB current and precharge time,current separate control
  Write_Register(0x80);
  Write_Parameter(0x00);

//PRECHARGE_TIME_R
//1 Precharge Time
  Write_Register(0x08);
  Write_Parameter(0x01);

//PRECHARGE_TIME_G
//1 Precharge Time
  Write_Register(0x09);
  Write_Parameter(0x01);

//PRECHARGE_TIME_B
//1 Precharge Time
  Write_Register(0x0A);
  Write_Parameter(0x01);

//PRECHARGE_CURRENT_R
  Write_Register(0x0B);
  Write_Parameter(0x0A);

//PRECHARGE_CURRENT_G
  Write_Register(0x0C);
  Write_Parameter(0x0A);

//PRECHARGE_CURRENT_B
  Write_Register(0x0D);
  Write_Parameter(0x0A);

//DRIVING_CURRENT_R
//82uA
  Write_Register(0x10);
  Write_Parameter(0x52);

```

Product No.	DD-160128FC-1A	REV. A

Page	17 / 27
------	---------

```

//DRIVING_CURRENT_G
//56uA
  Write_Register(0x11);
  Write_Parameter(0x38);

//DRIVING_CURRENT_B
//58uA
  Write_Register(0x12);
  Write_Parameter(0x3A);

//Display mode set
//RGB,column=0→159,column data display control=Normal Dispaly
  Write_Register(0x13);
  Write_Parameter(0x00);

//External interface mode =MPU
  Write_Register(0x14);
  Write_Parameter(0x01);

//MEMORY_WRITE_MODE
//6btis Triple transfer,262K support ,Horizontal address counter is increased,Vertical
  address
//counter is increased,The data is continuously written horizontally
  Write_Register(0x16);
  Write_Parameter(0x76);

//Memory Address setting range 0x17~0x19 →160x128
  Write_Register(0x17); //column start
  Write_Parameter(0x00);
  Write_Register(0x18); //column end
  Write_Parameter(0x9F);
  Write_Register(0x19); //row start
  Write_Parameter(0x00);
  Write_Register(0x1A); //row end
  Write_Parameter(0x7F);

//Memory Start Address set 0x20~0x21
  Write_Register(0x20); // X
  Write_Parameter(0x00);
  Write_Register(0x21); // Y
  Write_Parameter(0x00);

//DUTY
  Write_Register(0x28);
  Write_Parameter(0x7F);//128

//Display Start Line
  Write_Register(0x29);
  Write_Parameter(0x00);

//DDRAM Read Address Start point 0x2E~0x2F
  Write_Register(0x2E); // X
  Write_Parameter(0x00);
  Write_Register(0x2F); // Y
  Write_Parameter(0x00);

```

Product No.	DD-160128FC-1A	REV. A

Page	18 / 27
------	---------

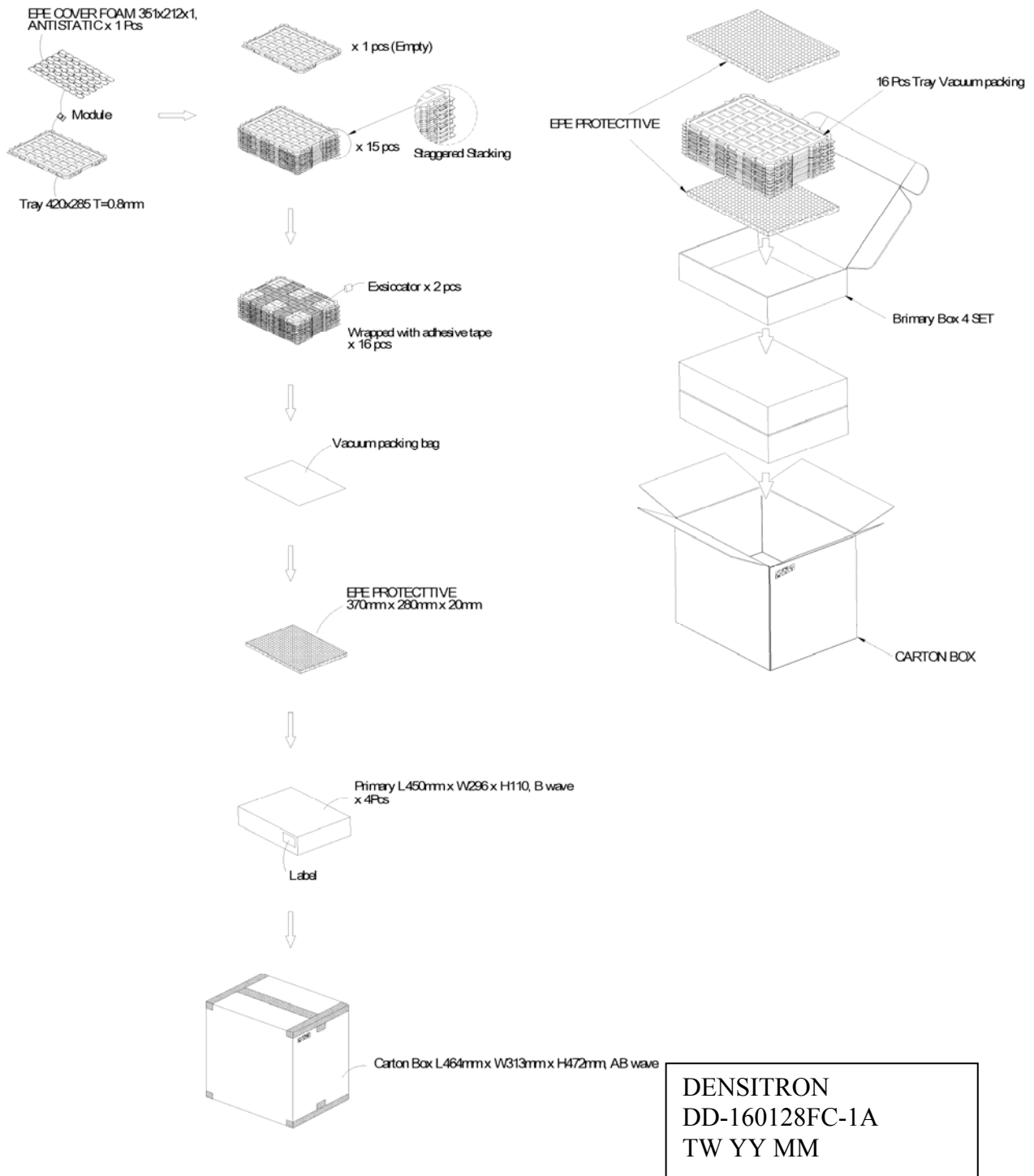
```
//Display Screen Saver Size 0x33~0x36
Write_Register(0x33); //Display Screen Saver Columns Start
Write_Parameter(0x00);
Write_Register(0x34); //Display Screen Saver Columns End
Write_Parameter(0x9F);
Write_Register(0x35); //Display Screen Saver Row Start
Write_Parameter(0x00);
Write_Register(0x36); //Display Screen Saver Row End
Write_Parameter(0x7F);
Write_Register(0x06); //Display ON
Write_Parameter(0x01);
```

Product No.	DD-160128FC-1A	REV. A

Page	19 / 27
------	---------

6 PACKAGING AND LABELLING SPECIFICATION

6.1 LABELLING & MARKING



Product No.	DD-160128FC-1A	REV. A

Page	20 / 27
------	---------

7 QUALITY ASSURANCE SPECIFICATION

7.1 CONFORMITY

The performance, function and reliability of the shipped products conform to the Product Specification.

7.2 DELIVERY ASSURANCE

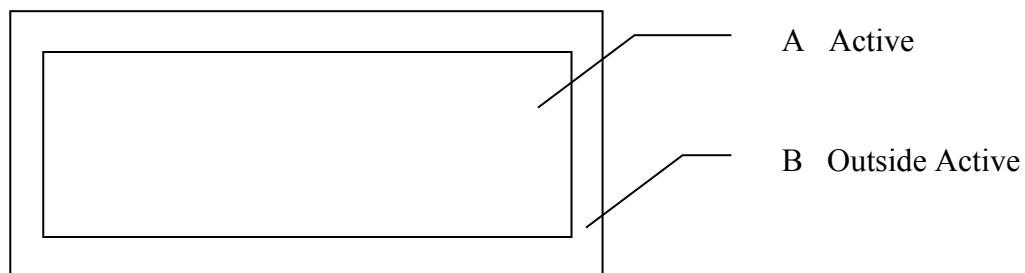
7.2.1 DELIVERY INSPECTION STANDARDS

MIL-STD-105E, general inspection level II, single sampling level;
IPC-AA610 rev. C, class 2 electronic assemblies standard

The quality assurance levels are shown below:

Class	AQL (%)
Critical defect	0.5%
Major defect	1.0%
Minor defect	1.5%
TOTAL	2.0%

7.2.2 Zone definition



7.2.3 Visual inspection

Test and measurement to be conducted under following conditions

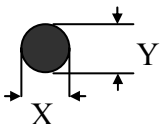
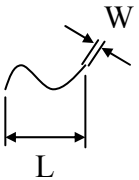
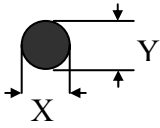
Temperature:	23±5°C
Humidity:	55±15%RH
Fluorescent lamp:	30 W
Distance between the Panel & Eyes of the Inspector:	≥30cm
Distance between the Panel & the lamp:	≥50cm

Product No.	DD-160128FC-1A	REV. A

Page	21 / 27
------	---------

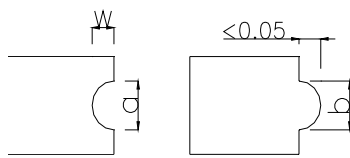
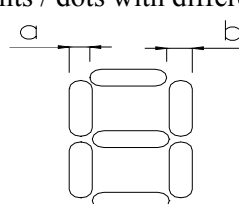
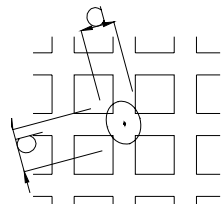
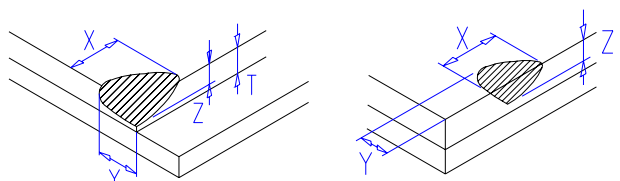
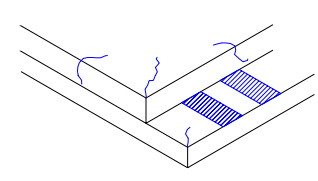
7.2.4 Standard of appearance inspection

Units: mm

Class	Item	Criteria																																	
Minor	Packing & Label	Outside & inside package Presence of product no., lot no., quantity																																	
Critical		Product must not be mixed with others and quantity must not be different from that indicated on the label																																	
Major	Dimension	Product dimensions must be according to specification and drawing																																	
Major	Electrical	Product electrical characteristics must be according to specification																																	
Critical	OLED Display	Missing lines, short circuits or wrong patterns on OLED display are not allowed																																	
Minor	Black spot, white spot, dust	<p>Round type: as per following drawing $\varnothing = (X+Y)/2$</p>  <table border="1" style="margin-left: auto; margin-right: auto;"> <thead> <tr> <th colspan="3">Acceptable quantity</th> </tr> <tr> <th>Size</th> <th>Zone A</th> <th>Zone B</th> </tr> </thead> <tbody> <tr> <td>$\varnothing < 0.1$</td> <td>Any number</td> <td rowspan="4">Any number</td> </tr> <tr> <td>$0.1 < \varnothing < 0.2$</td> <td>3</td> </tr> <tr> <td>$0.2 < \varnothing < 0.25$</td> <td>1</td> </tr> <tr> <td>$0.25 < \varnothing$</td> <td>0</td> </tr> </tbody> </table> <p>Line type: as per following drawing</p>  <table border="1" style="margin-left: auto; margin-right: auto;"> <thead> <tr> <th colspan="4">Acceptable quantity</th> </tr> <tr> <th>Length</th> <th>Width</th> <th>Zone A</th> <th>Zone B</th> </tr> </thead> <tbody> <tr> <td>--</td> <td>$W \leq 0.05$</td> <td>Any number</td> <td rowspan="3">Any number</td> </tr> <tr> <td>$L \leq 2.0$</td> <td>$W \leq 0.1$</td> <td>3</td> </tr> <tr> <td>$L > 2.0$</td> <td></td> <td>0</td> </tr> </tbody> </table> <p style="text-align: center;">Total acceptable quantity: 3</p>	Acceptable quantity			Size	Zone A	Zone B	$\varnothing < 0.1$	Any number	Any number	$0.1 < \varnothing < 0.2$	3	$0.2 < \varnothing < 0.25$	1	$0.25 < \varnothing$	0	Acceptable quantity				Length	Width	Zone A	Zone B	--	$W \leq 0.05$	Any number	Any number	$L \leq 2.0$	$W \leq 0.1$	3	$L > 2.0$		0
Acceptable quantity																																			
Size	Zone A	Zone B																																	
$\varnothing < 0.1$	Any number	Any number																																	
$0.1 < \varnothing < 0.2$	3																																		
$0.2 < \varnothing < 0.25$	1																																		
$0.25 < \varnothing$	0																																		
Acceptable quantity																																			
Length	Width	Zone A	Zone B																																
--	$W \leq 0.05$	Any number	Any number																																
$L \leq 2.0$	$W \leq 0.1$	3																																	
$L > 2.0$		0																																	
Minor	Polariser scratch	Scratch on protective film is permitted Scratch on polariser: same as No. 1																																	
Minor	Polariser bubble	<p>$\varnothing = (X+Y)/2$</p>  <table border="1" style="margin-left: auto; margin-right: auto;"> <thead> <tr> <th colspan="3">Acceptable quantity</th> </tr> <tr> <th>Size</th> <th>Zone A</th> <th>Zone B</th> </tr> </thead> <tbody> <tr> <td>$\varnothing < 0.5$</td> <td>Any number</td> <td rowspan="2">Any number</td> </tr> <tr> <td>$\varnothing > 0.5$</td> <td>0</td> </tr> </tbody> </table>	Acceptable quantity			Size	Zone A	Zone B	$\varnothing < 0.5$	Any number	Any number	$\varnothing > 0.5$	0																						
Acceptable quantity																																			
Size	Zone A	Zone B																																	
$\varnothing < 0.5$	Any number	Any number																																	
$\varnothing > 0.5$	0																																		

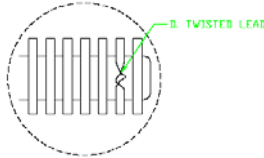
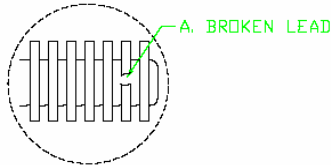
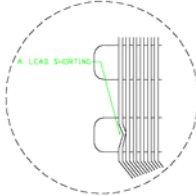
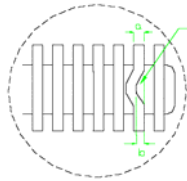
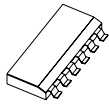
Product No.	DD-160128FC-1A	REV. A

Page	22 / 27
------	---------

Class	Item	Criteria																												
Minor	Segment deformation	<p>1b. Pin hole on dot matrix display</p>  <table border="1" data-bbox="1005 380 1404 560"> <thead> <tr> <th colspan="2">Acceptable quantity</th> </tr> <tr> <th>Size</th> <th></th> </tr> </thead> <tbody> <tr> <td>$a, b < 0.1$</td> <td>Any number</td> </tr> <tr> <td>$(a+b)/2 \le 0.1$</td> <td>Any number</td> </tr> <tr> <td>$0.5 < \varnothing < 1.0$</td> <td>3</td> </tr> </tbody> </table> <p>Total acceptable quantity: 7</p> <p>2. Segments / dots with different width</p>  <table border="1" data-bbox="1005 761 1404 873"> <thead> <tr> <th colspan="2">Acceptable</th> </tr> </thead> <tbody> <tr> <td>$a > b$</td> <td>$a/b \le 4/3$</td> </tr> <tr> <td>$a < b$</td> <td>$a/b > 4/3$</td> </tr> </tbody> </table> <p>3. Alignment layer defect</p> <p>$\varnothing = (a+b)/2$</p>  <table border="1" data-bbox="1005 940 1404 1164"> <thead> <tr> <th colspan="2">Acceptable quantity</th> </tr> <tr> <th>Size</th> <th></th> </tr> </thead> <tbody> <tr> <td>$\varnothing \le 0.4$</td> <td>Any number</td> </tr> <tr> <td>$0.4 < \varnothing \le 1.0$</td> <td>5</td> </tr> <tr> <td>$1.0 < \varnothing \le 1.5$</td> <td>3</td> </tr> <tr> <td>$1.5 < \varnothing \le 2.0$</td> <td>2</td> </tr> </tbody> </table> <p>Total acceptable quantity: 7</p>	Acceptable quantity		Size		$a, b < 0.1$	Any number	$(a+b)/2 \le 0.1$	Any number	$0.5 < \varnothing < 1.0$	3	Acceptable		$a > b$	$a/b \le 4/3$	$a < b$	$a/b > 4/3$	Acceptable quantity		Size		$\varnothing \le 0.4$	Any number	$0.4 < \varnothing \le 1.0$	5	$1.0 < \varnothing \le 1.5$	3	$1.5 < \varnothing \le 2.0$	2
Acceptable quantity																														
Size																														
$a, b < 0.1$	Any number																													
$(a+b)/2 \le 0.1$	Any number																													
$0.5 < \varnothing < 1.0$	3																													
Acceptable																														
$a > b$	$a/b \le 4/3$																													
$a < b$	$a/b > 4/3$																													
Acceptable quantity																														
Size																														
$\varnothing \le 0.4$	Any number																													
$0.4 < \varnothing \le 1.0$	5																													
$1.0 < \varnothing \le 1.5$	3																													
$1.5 < \varnothing \le 2.0$	2																													
Minor	Panel Chipping	<p>$X \le 1/6$ Panel length $Y \le 1$ $Z \le T$</p> 																												
Minor	Panel Cracking	<p>Cracks not allowed</p> 																												
Minor	Copper exposed (pin or film)	Not allowed if visible by eye inspection																												
Minor	Film or Trace Damage	Not allowed if affect electrical function																												

Product No.	DD-160128FC-1A	REV. A

Page	23 / 27
------	---------

Class	Item	Criteria													
Minor	Contact Lead Twist	Not allowed 													
Minor	Contact Lead Broken	Not allowed 													
Minor	Contact Lead Bent	Not allowed if bent lead causes short circuit 													
		Not allowed if bent lead extends horizontally more than 50% of its width 													
Minor	Colour uniformity	Level of sample for approval set as limit sample													
Major		No unmelted solder paste should be present on PCB													
Critical		Cold solder joints, missing solder connections, or oxidation are not allowed													
Minor		No residue or solder balls on PCB are allowed													
Critical		Short circuits on components are not allowed													
Minor	Tray particles	<table border="1"> <thead> <tr> <th></th> <th>Size</th> <th>Quantity</th> </tr> </thead> <tbody> <tr> <td rowspan="2">On tray</td> <td>$\varnothing < 0.2$</td> <td>Any number</td> </tr> <tr> <td>$\varnothing > 0.25$</td> <td>4</td> </tr> <tr> <td rowspan="2">On display</td> <td>$\varnothing \geq 0.25$</td> <td>2</td> </tr> <tr> <td>L = 3</td> <td>1</td> </tr> </tbody> </table>		Size	Quantity	On tray	$\varnothing < 0.2$	Any number	$\varnothing > 0.25$	4	On display	$\varnothing \geq 0.25$	2	L = 3	1
	Size	Quantity													
On tray	$\varnothing < 0.2$	Any number													
	$\varnothing > 0.25$	4													
On display	$\varnothing \geq 0.25$	2													
	L = 3	1													

Product No.	DD-160128FC-1A	REV. A

Page	24 / 27
------	---------

7.3 DEALING WITH CUSTOMER COMPLAINTS

7.3.1 Non-conforming analysis

Purchaser should supply Densitron with detailed data of non-conforming sample.
 After accepting it, Densitron should complete the analysis in two weeks from receiving the sample.
 If the analysis cannot be completed on time, Densitron must inform the purchaser.

7.3.2 Handling of non-conforming displays

If any non-conforming displays are found during customer acceptance inspection which Densitron is clearly responsible for, return them to Densitron.
 Both Densitron and customer should analyse the reason and discuss the handling of non-conforming displays when the reason is not clear.
 Equally, both sides should discuss and come to agreement for issues pertaining to modification of Densitron quality assurance standard.

Product No.	DD-160128FC-1A	REV. A

Page	25 / 27
------	---------

8 RELIABILITY SPECIFICATION

8.1 RELIABILITY TESTS

Test Item	Test Condition	Evaluation and assessment
High Temperature Operation	70°C±2, 240 hours	No abnormalities in function and appearance
Low Temperature Operation	-30°C±2, 240 hours	No abnormalities in function and appearance
High Temperature Storage	80°C±2, 240 hours	No abnormalities in function and appearance
Low Temperature Storage	-40°C±2, 240 hours	No abnormalities in function and appearance
High Temperature & High Humidity Storage(Operation)	60°C±2, 90%RH, 120 hours	No abnormalities in function and appearance
Thermal Shock	24 cycle of -40°C 1 Hour, 85°C 1 Hour	No abnormalities in function and appearance

- The brightness should be greater than 50% of the initial brightness.
- The samples used for above tests do not include polarizer.
- No moisture condensation is observed during tests.

8.1.1 FAILURE CHECK STANDARD

After the completion of the described reliability test, the samples were left at room temperature for 2 hrs prior to conducting the failure test at 23±5 °C; 55±15% RH

8.2 LIFE TIME

Item	Description
1	Function, performance, appearance, etc. shall be free from remarkable deterioration more than 10,000 hours under 100 CD/m ² brightness and storage conditions of room temperature (25±10 °C), normal humidity (45±20% RH), and in area not exposed to direct sunlight.
2	End of lifetime is specified as 50% of initial brightness.

Product No.	DD-160128FC-1A	REV. A
-------------	----------------	--------

Page	26 / 27
------	---------

9 HANDLING PRECAUTIONS

Safety

If the panel breaks, be careful not to get the organic substance in your mouth or in your eyes.
If the organic substance touches your skin or clothes, wash it off immediately using soap and plenty of water.

Mounting and Design

Place a transparent plate (e.g. acrylic, polycarbonate or glass) on the display surface to protect the display from external pressure. Leave a small gap between the transparent plate and the display surface.

Design the system so that no input signal is given unless the power supply voltage is applied.

Caution during OLED cleaning

Lightly wipe the display surface with a soft cloth soaked with Isopropyl alcohol, Ethyl alcohol or Trichlorotrifluoroethane.

Do not wipe the display surface with dry or hard materials that will damage the polariser surface.

Do not use aromatic solvents (toluene and xylene), or ketonic solvents (ketone and acetone).

Caution against static charge

As the display uses C-MOS LSI drivers, connect any unused input terminal to V_{DD} or V_{SS} . Do not input any signals before power is turned on.

Also, ground your body, work/assembly table and assembly equipment to protect against static electricity.

Packaging

Displays use OLED elements, and must be treated as such. Avoid strong shock and drop from a height.

To prevent displays from degradation, do not operate or store them exposed directly to sunshine or high temperature/humidity.

Caution during operation

It is indispensable to drive the display within the specified voltage limit since excessive voltage shortens its life.

Other Precautions

When a display module is operated for a long of time with fixed pattern may remain as an after image or slight contrast deviation may occur.

Nonetheless, if the operation is interrupted and left unused for a while, normal state can be restored.

Also, there will be no problem in the reliability of the module.

Storage

Store the display in a dark place where the temperature is $25^{\circ}\text{C} \pm 10^{\circ}\text{C}$ and the humidity below 50%RH.

Store the display in a clean environment, free from dust, organic solvents and corrosive gases.

Do not crash, shake or jolt the display (including accessories).

Product No.	DD-160128FC-1A	REV. A

Page	27 / 27
------	---------