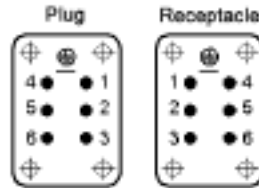


SCREW & CRIMP TERMINATED INSERTS

SCREW TERMINATED

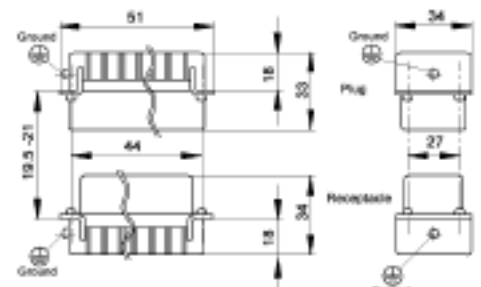
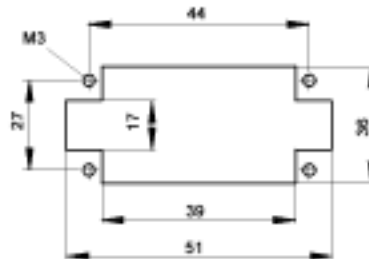
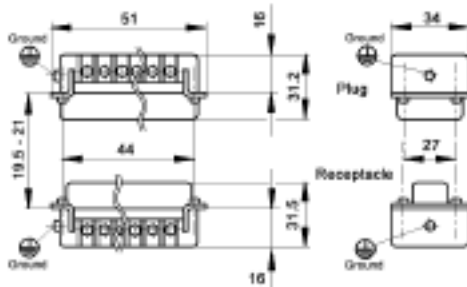
View from Cable Side

CRIMP TERMINATED



Panel Cut-Out
(Insert Only)

Contacts Sold Separately



All dimensions are in mm.

These inserts fit in the HBE 6 Series Housings.

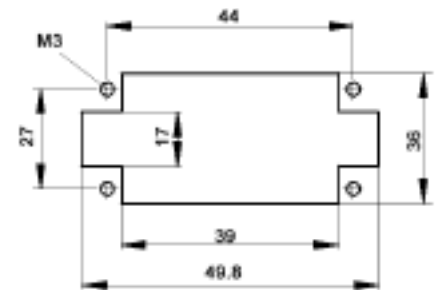
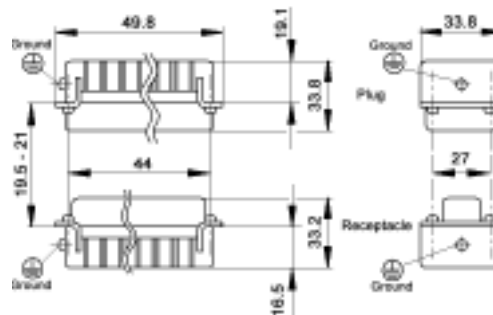
	Plug	Receptacle
Screw Terminated with wire protection	10.1900	10.1910
Screw Terminated without wire protection	10.1901	10.1911
Crimp Terminated: Machine	10.1800	10.1810

Crimp Contacts are on the next page.

SCREWLESS SPRING CAGE CLAMP INSERTS



Panel Cut-Out
(Insert Only)



Same **View from Cable Side** as Screw & Crimp Termination

These inserts fit in the HBE 6 Series Housings.

	Plug	Receptacle
Screwless Cage Clamp	10.4000	10.4010

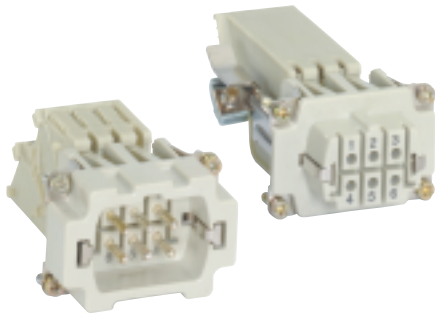
All dimensions are in mm.

EPIC® CONNECTORS

Accessories for Crimp Terminated Inserts

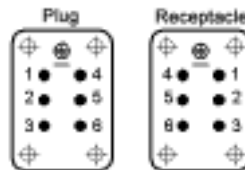


SCREW TERMINATED TERMINAL BLOCK INSERTS

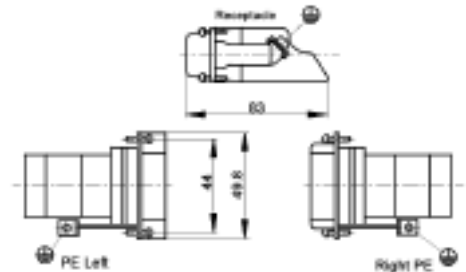


These terminal block inserts only fit in HBE 6 panel mount bases

View from Cable Side



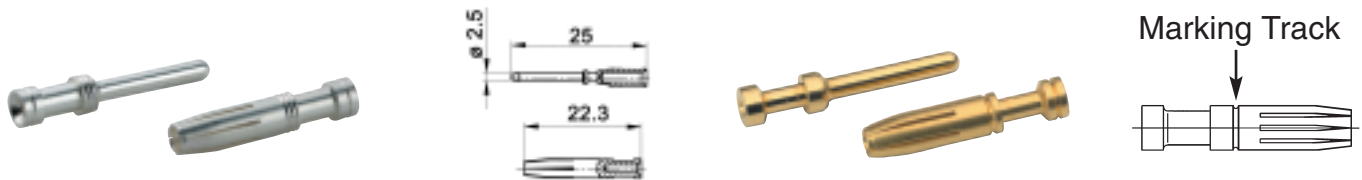
All dimensions are in mm.



One terminal block insert mates with one screw terminated insert.

	Receptacle
Terminal Block: Right Ground	70.3111
Terminal Block: Left Ground	70.3101

MACHINED CONTACTS: DIAMETER 2.5 MM²



Bags of 100

mm ²	AWG	Silver		Gold		Stripping Length (mm)	# of Marking Tracks
		Pin	Socket	Pin	Socket		
0.5	20	11.1900	11.1950	11.1920	11.1970	Pin=7.4, Socket =7.3	-
.75 - 1.0	18	11.1901	11.1951	11.1921	11.1971	Pin=7.4, Socket =7.3	1
1.5	16	11.1902	11.1952	11.1922	11.1972	Pin=7.4, Socket =7.3	2
2.5	14	11.1903	11.1953	-	-	Pin=7.4, Socket =7.3	3
4.0	12	11.1904	11.1954	-	-	Pin=7.4, Socket =7.3	-

Part number= 1 contact

CRIMP TOOLS

Wire Gauge: 0.5 - 4.0 mm² for the HBE Crimp Inserts



Locator
11.1472



Crimp Tool
11.1470



Crimp Dies
11.1471

For removal of contacts use a slotted screwdriver. No special tool is necessary.

Please note that the crimp range for this tool is 0.14 to 2.5 mm² (AWG 26 - 14) with the appropriate crimp dies.

