

# EPIC® CONNECTORS

HBE 10 Plugs & Receptacles

RoHS ✓

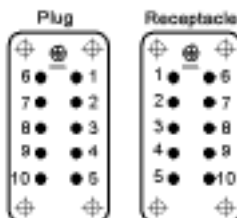


## SCREW & CRIMP TERMINATED INSERTS

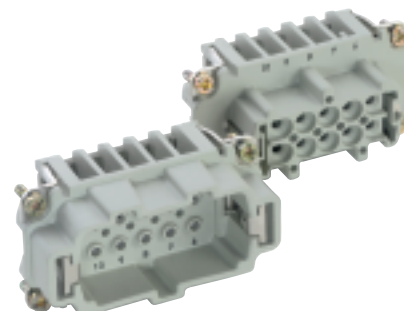
### SCREW TERMINATED



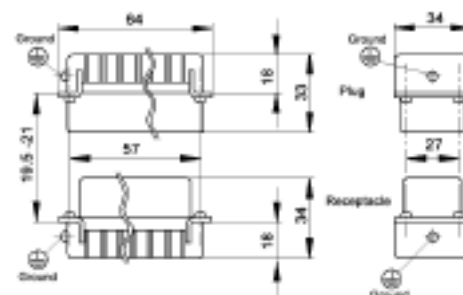
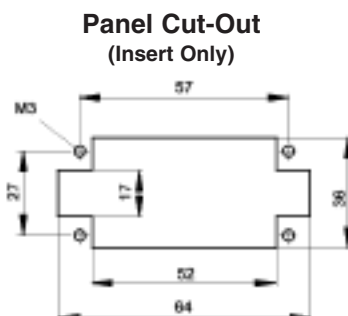
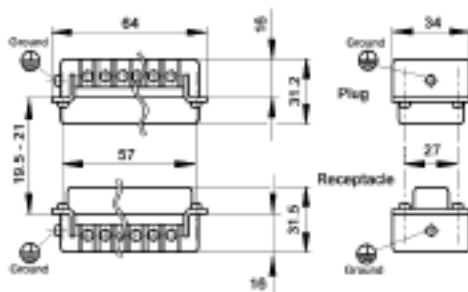
View from Cable Side



### CRIMP TERMINATED



Contacts Sold Separately



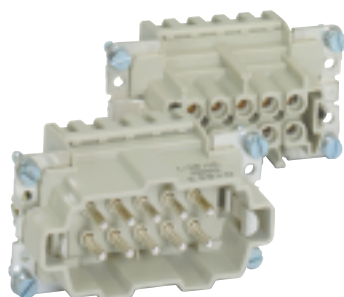
All dimensions are in mm.

These inserts fit in the HBE 10 Series Housings.

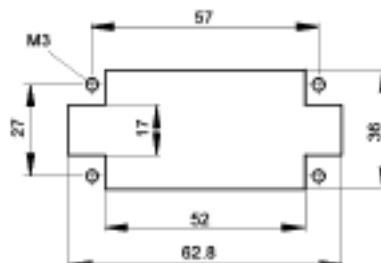
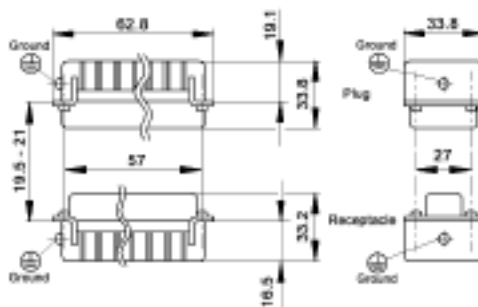
	Plug	Receptacle
Screw Terminated: with wire protection	10.1920	10.1930
Screw Terminated: without wire protection	10.1921	10.1931
Crimp Terminated: Machine	10.1820	10.1830

Crimp Contacts are on the next page.

## SCREWLESS SPRING CAGE CLAMP INSERTS



Panel Cut-Out



All dimensions are in mm.

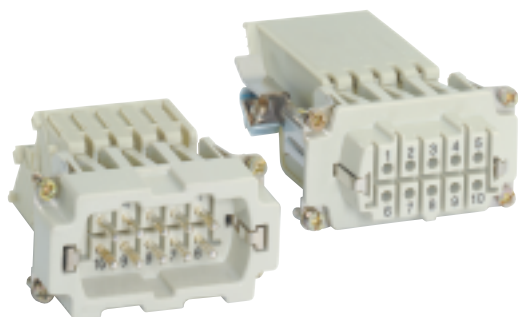
Same View from Cable Side as Screw & Crimp Termination

	Plug	Receptacle
Screwless Cage Clamp	10.4001	10.4011

These inserts fit in the HBE 10 Series Housings.

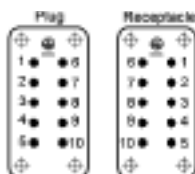


## SCREW TERMINATED TERMINAL BLOCK INSERTS

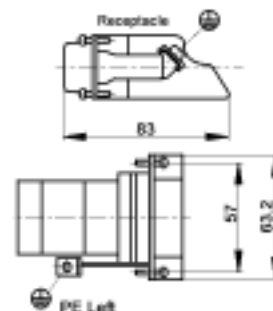


These terminal block inserts only fit in HBE 10 panel mount bases

View from Cable Side



All dimensions are in mm.



One terminal block insert mates with one screw terminated insert.

	Receptacle
Terminal Block: Left Ground	70.3121

## MACHINED CONTACTS: DIAMETER 2.5 MM<sup>2</sup>



Bags of 100

mm <sup>2</sup>	AWG	Silver		Gold		Stripping Length (mm)	# of Marking Tracks
		Pin	Socket	Pin	Socket		
0.5	20	11.1900	11.1950	11.1920	11.1970	Pin=7.4, Socket =7.3	-
.75 - 1.0	18	11.1901	11.1951	11.1921	11.1971	Pin=7.4, Socket =7.3	1
1.5	16	11.1902	11.1952	11.1922	11.1972	Pin=7.4, Socket =7.3	2
2.5	14	11.1903	11.1953	-	-	Pin=7.4, Socket =7.3	3
4.0	12	11.1904	11.1954	-	-	Pin=7.4, Socket =7.3	-

Part number= 1 contact

## CRIMP TOOLS

Wire Gauge: 0.5 - 4.0 mm<sup>2</sup> for the HBE Crimp Inserts



**Locator**  
11.1472



**Crimp Tool**  
11.1470



**Crimp Dies**  
11.1471

For removal of contacts use a slotted screwdriver. No special tool is necessary.

Please note that the crimp range for this tool is 0.14 to 2.5 mm<sup>2</sup> (AWG 26 - 14) with the appropriate crimp dies.