

EPIC® H-B 10 Housings

Housing style H-B. The industry standard.



H-B 10 TSH-RO

Suitable inserts:

- EPIC® H-BVE 3 Screw termination see page 453
- EPIC® H-BVE 3 Cage clamp see page 453
- EPIC® H-DD 42 see page 440
- EPIC® H-EE 18 see page 449
- EPIC® MCR 10 see page 462
- EPIC® H-BE 10 Screw termination see page 444
- EPIC® H-BE 10 Crimp termination see page 444
- EPIC® H-BE 10 Cage clamp see page 444



H-B 10 TG



H-B 10 TGH



| Part number | Part | PG | M | ZW | L | L1 | I2 | B | B1 | B4 | H |
|---|-------------------|----|----|-----|----|----|----|----|------|----|----|
| H-B housing: Hood (side cable entry, bolts for single lever, high version) | | | | | | | | | | | |
| 70054200 | H-B 10 TSH-RO 21 | 21 | | yes | 73 | | | 90 | 43 | 45 | 72 |
| 70054400 | H-B 10 TSH-RO 29 | 29 | | yes | 73 | | | 90 | 43 | 45 | 72 |
| 79054200 | H-B 10 TSH-RO M25 | | 25 | | 73 | | | 90 | 43 | 45 | 72 |
| 79054400 | H-B 10 TSH-RO M32 | | 32 | | 73 | | | 90 | 43 | 45 | 72 |
| H-B housing: Hood (straight cable entry, bolts for double lever) | | | | | | | | | | | |
| 10040000 | H-B 10 TG 16 | 16 | | yes | 73 | 27 | | 43 | 57,8 | 45 | 52 |
| 10040100 | H-B 10 TG 21 | 21 | | yes | 73 | 27 | | 43 | 57,8 | 45 | 52 |
| 19040000 | H-B 10 TG M20 | | 20 | | 73 | 27 | | 43 | 57,8 | 45 | 52 |
| 19040100 | H-B 10 TG M25 | | 25 | | 73 | 27 | | 43 | 57,8 | 45 | 52 |
| H-B housing: Hood (straight cable entry, bolts for double lever, high version) | | | | | | | | | | | |
| 70050400 | H-B 10 TGH 21 | 21 | | yes | 73 | 27 | | 43 | 57,8 | 45 | 72 |
| 70050600 | H-B 10 TGH 29 | 29 | | yes | 73 | 27 | | 43 | 57,8 | 45 | 72 |
| 79050400 | H-B 10 TGH M25 | | 25 | | 73 | 27 | | 43 | 57,8 | 45 | 72 |
| 79050600 | H-B 10 TGH M32 | | 32 | | 73 | 27 | | 43 | 57,8 | 45 | 72 |

EPIC® H-B 10 Housings

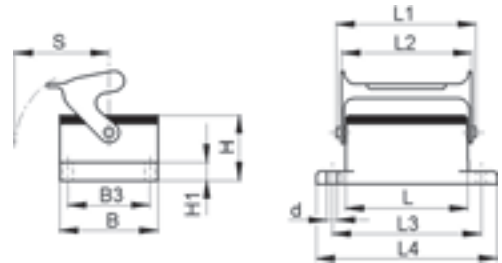
Housing style H-B. The industry standard.



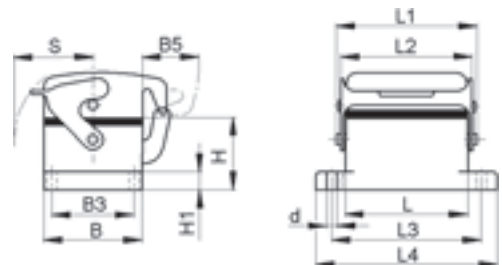
H-B 10 AG-LB

Suitable inserts:

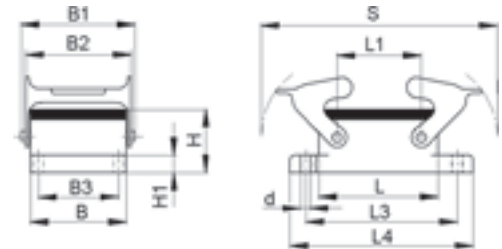
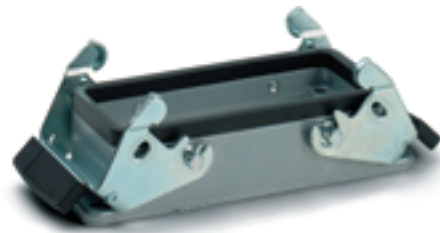
- EPIC® H-BVE 3 Screw termination see page 453
- EPIC® H-BVE 3 Cage clamp see page 453
- EPIC® H-DD 42 see page 440
- EPIC® H-EE 18 see page 449
- EPIC® MCR 10 see page 462
- EPIC® H-BE 10 Screw termination see page 444
- EPIC® H-BE 10 Crimp termination see page 444
- EPIC® H-BE 10 Cage clamp see page 444



H-B 10 AD-LB



H-B 10 AG



| Part number | Part | L | L1 | L2 | L3 | L4 | B | B1 | B2 | B3 | B5 | H | H1 | s | d |
|--|--------------|----|----|------|----|----|----|------|----|----|----|------|----|-----|-----|
| H-B housing: Panel mount base (single lever) | | | | | | | | | | | | | | | |
| 10032900 | H-B 10 AG-LB | 73 | 91 | 88,5 | 83 | 93 | 43 | | | 32 | | 27,8 | 4 | 50 | 4,3 |
| H-B housing: Panel mount base (cover, single lever) | | | | | | | | | | | | | | | |
| 10033900 | H-B 10 AD-LB | 73 | 91 | 88,5 | 83 | 93 | 43 | | | 32 | 25 | 27,8 | 4 | 50 | 4,3 |
| H-B housing: Panel mount base (double lever) | | | | | | | | | | | | | | | |
| 10032000 | H-B 10 AG | 73 | 27 | | 83 | 93 | 43 | 57,8 | 53 | 32 | | 27,8 | 4 | 116 | 4,3 |

EPIC® H-BE Inserts

The standard inserts with screw termination, crimp termination and cage clamp termination

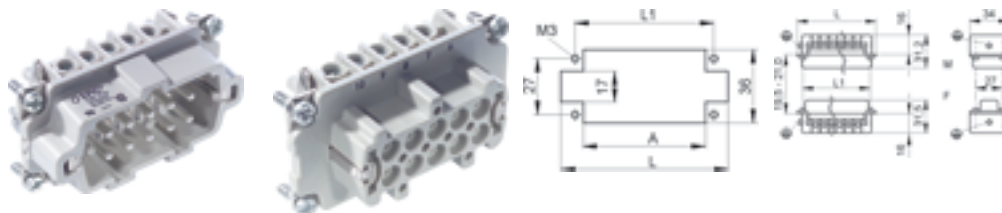


H-BE 10 screw termination

The characteristic qualities of the proven EPIC® H-BE series are their suitability for applications with high voltages and current as well as their high reliability.

Ranges of application:

From machine building to control cabinet manufacturing, Light & Sound, polymer engineering



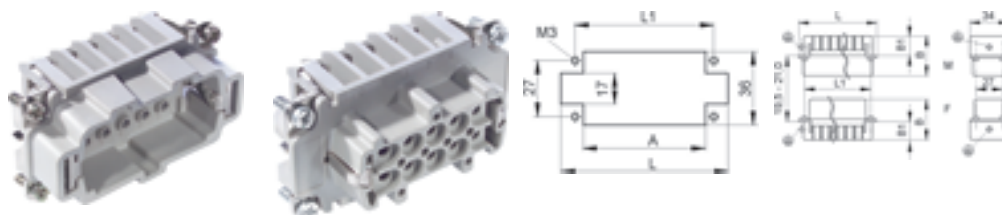
Suitable housing:

EPIC® H-B 10 Housings see page 489

H-BE 10 crimp termination

Suitable housing:

EPIC® H-B 10 Housings see page 489



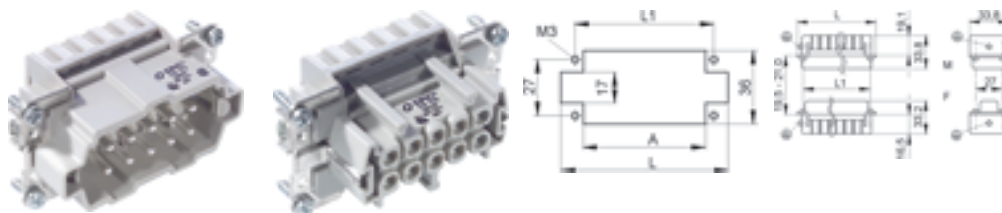
Suitable contacts:

EPIC® H-BE 2,5 machined contacts see page 466

H-BE 10 cage clamp

Suitable housing:

EPIC® H-B 10 Housings see page 489



Technical Data

Rated voltage
IEC: 500 V
UL: 600 V
CSA: 600 V

Rated impulse Voltage
6 kV

Rated current
IEC: 16 A
UL: 16 A
CSA: 16 A

Pollution degree
3

Contact resistance
EPIC® H-BE 10 Screw termination
< 2 mOhm
EPIC® H-BE 10 Crimp termination
< 2 mOhm
EPIC® H-BE 10 Cage clamp
1.5 - 4 mOhm

Contacts
EPIC® H-BE 10 Screw termination
Copper alloy, hard silver plated
EPIC® H-BE 10 Crimp termination
Copper alloy, hard silver / gold plated
EPIC® H-BE 10 Cage clamp
Copper alloy, hard silver plated

Numbers of contacts
10 + PE

Termination methods
EPIC® H-BE 10 Screw termination
Screw termination: 0.5 - 2.5 mm²
EPIC® H-BE 10 Crimp termination
Crimp termination: 0.5 - 4.0 mm²
EPIC® H-BE 10 Cage clamp
Cage clamp termination: 0.5 - 2.5 mm²

Cycle of mechanical operation
100

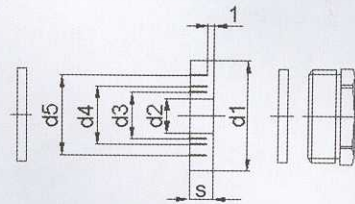
Range of temperature
-40°C - +100°C, temporary up to +125°C

| Part number | Part | Version | Type | Wire protection | Contacts | L | L1 | A | B | B1 |
|---------------------------------------|-------------|---------|----------|-----------------|----------|------|----|----|----|----|
| H-BE 10 screw termination | | | | | | | | | | |
| 10192000 | H-BE 10 SS | male | | yes | 1 - 10 | 64 | 57 | 52 | | |
| 10193000 | H-BE 10 BS | male | | yes | 1 - 10 | 64 | 57 | 52 | | |
| 10192100 | H-BE 10 SS | male | | - | 1 - 10 | 64 | 57 | 52 | | |
| 10193100 | H-BE 10 BS | male | | - | 1 - 10 | 64 | 57 | 52 | | |
| H-BE 10 crimp termination | | | | | | | | | | |
| 10182000 | H-BE 10 SCM | male | machined | | 1 - 10 | 64 | 57 | 52 | 33 | 18 |
| 10183000 | H-BE 10 BCM | male | machined | | 1 - 10 | 64 | 57 | 52 | 34 | 18 |
| H-BE 10 cage clamp termination | | | | | | | | | | |
| 10400100 | H-BE 10 SF | male | | | 1 - 10 | 62,8 | 57 | 52 | | |
| 10401100 | H-BE 10 BF | male | | | 1 - 10 | 62,8 | 57 | 52 | | |

VDE approval is not valid for applications using the cage clamp termination

5.1 EPIC® CERTOSA M & PG

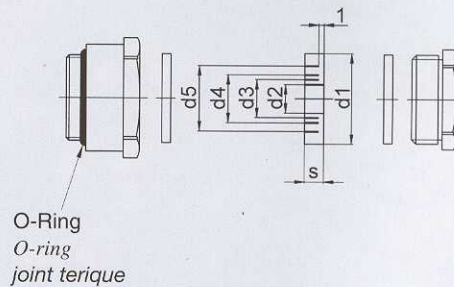
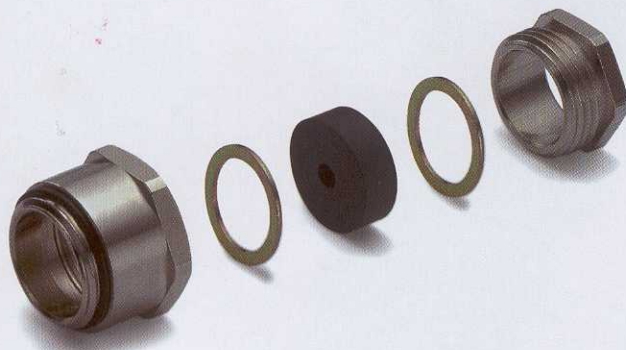
Kabelverschraubungen metrisch / Cable glands metric thread / Presse-étoupes pas métrique



EPIC® SM-M

| Artikel part article | Art.Nr. part No. N° art. | M metric thread pas métrique | d1 | d2 | Kabel Ø cable Ø câble Ø | d3 | Kabel Ø cable Ø câble Ø | d4 | Kabel Ø cable Ø câble Ø | d5 | Kabel Ø cable Ø câble Ø | S | SW mm opening of the spanner ouverture de clef | VPE packing unit condition- nement |
|----------------------------|--------------------------------|--|------|-----|-------------------------------|------|-------------------------------|------|-------------------------------|------|-------------------------------|-----|--|--|
| SM-M12 | 71200000 | 12 | 10 | 5 | 4-6 | | | | | | | 5 | 12 | 5 |
| SM-M16 | 71200100 | 16 | 13,8 | 3 | 2-4 | 6 | 5-7 | 9 | 8-10 | | | 5,5 | 16 | 5 |
| SM-M20 | 71200200 | 20 | 13,9 | 4 | 3-5 | 7 | 6-8 | 10 | 9-11 | 13 | 12-13,5 | 6 | 20 | 5 |
| SM-M25 | 71200300 | 25 | 22,6 | 8,5 | 7,5-9,5 | 11,5 | 10,5-12,5 | 14,5 | 13,5-15,5 | 17,5 | 16,5-18,5 | 7,5 | 25 | 5 |
| SM-M32 | 71200400 | 32 | 29,6 | 16 | 15-17 | 19 | 18-20 | 22 | 21-23 | 25 | 24-26 | 9,5 | 32 | 5 |
| SM-M40 | 71200500 | 40 | 37,6 | 23 | 22-24 | 26 | 25-27 | 29 | 28-30 | 32 | 31-33 | 12 | 40 | 5 |
| SM-M50 | 71200600 | 50 | 47,6 | 30 | 29-31 | 33 | 32-34 | 36 | 35-37 | 39 | 38-40 | 14 | 50 | 5 |

Material / material / matière: Metall, Messing vernickelt / metal, brass, nickel plated / métallique, laiton nickelage
 Schutzart / protection class / degré de protection: IP 65 (EN60529)
 Temperaturbereich / temperature range / gamme de température: -40 °C bis +80 °C



EPIC® CM-M

| Artikel part article | Art.Nr. part No. N° art. | M metric thread pas métrique | d1 | d2 | Kabel Ø cable Ø câble Ø | d3 | Kabel Ø cable Ø câble Ø | d4 | Kabel Ø cable Ø câble Ø | d5 | Kabel Ø cable Ø câble Ø | S | SW mm opening of the spanner ouverture de clef | VPE packing unit condition- nement |
|----------------------------|--------------------------------|--|------|-----|-------------------------------|------|-------------------------------|------|-------------------------------|------|-------------------------------|-----|--|--|
| CM-M12 | 71201000 | 12 | 10 | 5 | 4-6 | | | | | | | 5 | 15 | 5 |
| CM-M16 | 71201100 | 16 | 13,8 | 3 | 2-4 | 6 | 5-7 | 9 | 8-10 | | | 5,5 | 19 | 5 |
| CM-M20 | 71201200 | 20 | 13,9 | 4 | 3-5 | 7 | 6-8 | 10 | 9-11 | 13 | 12-13,5 | 6 | 23 | 5 |
| CM-M25 | 71201300 | 25 | 22,6 | 8,5 | 7,5-9,5 | 11,5 | 10-12,5 | 14,5 | 13,5-15,5 | 17,5 | 16,5-18,5 | 7,5 | 28 | 5 |
| CM-M32 | 71201400 | 32 | 29,6 | 16 | 15-17 | 19 | 18-20 | 22 | 21-23 | 25 | 24-26 | 9,5 | 36 | 5 |
| CM-M40 | 71201500 | 40 | 37,6 | 23 | 22-24 | 26 | 25-27 | 29 | 28-30 | 32 | 31-33 | 12 | 46 | 5 |
| CM-M50 | 71201600 | 50 | 47,6 | 30 | 29-31 | 33 | 32-34 | 36 | 35-37 | 39 | 38-40 | 14 | 55 | 5 |

Material / material / matière: Metall, Messing vernickelt / metal, brass, nickel plated / métallique, laiton nickelage
 Schutzart / protection class / degré de protection: IP 65 (EN60529)
 Temperaturbereich / temperature range / gamme de température: -40 °C bis +80 °C