

Switch Housing

For screw attachment from the front.

Material and surface:

Housing and end caps made of stainless steel, material no. 1.4301. Blasted surface and electropolished.

Function elements:

Depending on the type with push button or emergency stop.

Connection A:

Plug M12 x 1 out of the attachment face.

Connection B:

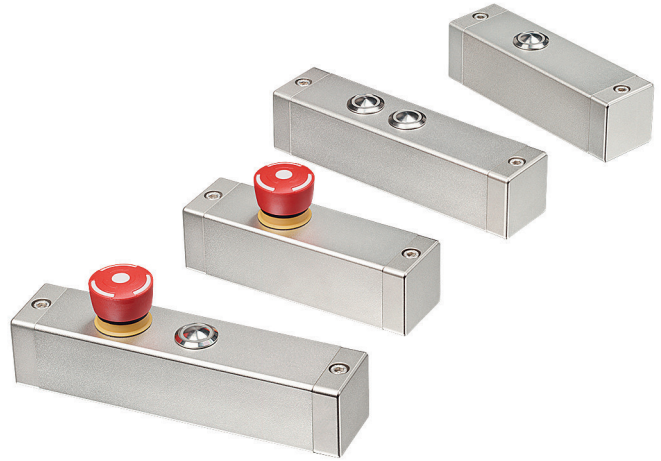
Connection Cable 10 m out of the attachment face.



Protection class:



IP 65 (for version A with screwed coupling).

Note:

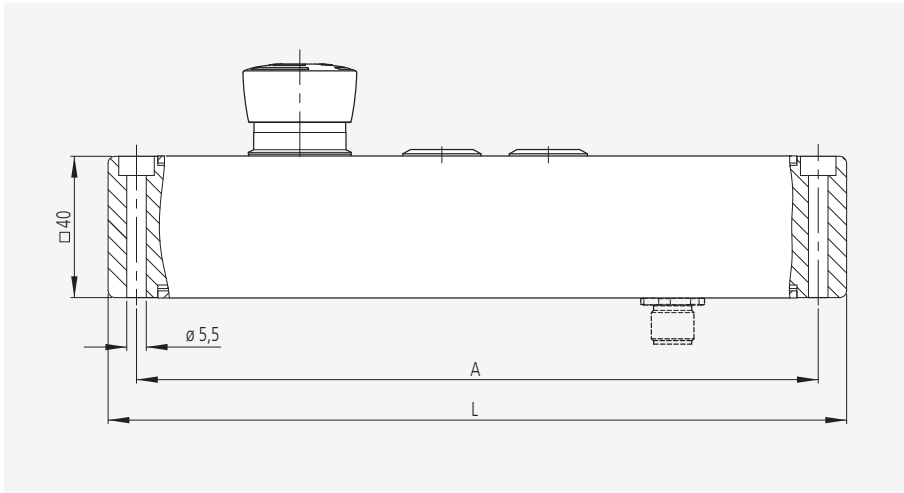
On request customized variants are possible.



Typ	A	L	Connection	
			A Plug	B Cable
TG-01				
1 push button	120	136	Order no. TG-01S.F120.36	Order no. TG-01K.F120.36
TG-02				
2 push buttons	150	166	Order no. TG-02S.F150.36	Order no. TG-02K.F150.36
TG-20				
Emergency stop	120	136	Order no. TG-20S.F120.36	Order no. TG-20K.F120.36
TG-04				
Emergency stop + 1 push buttons	160	176	Order no. TG-04S.F160.36	Order no. TG-04K.F160.36
TG-05				
Emergency stop + 2 push buttons	190	206	Order no. TG-05S.F190.36	Order no. TG-05K.F190.36

Handle accessories			
Coupling with cable			
8-pole (M12 x 1)		12-pole (M12 x 1)	
L	Order no.	Order no.	
	10 m	FZ-KS.G08.10	FZ-KS.G12.10
	10 m	FZ-KS.W08.10	FZ-KS.W12.10





Technical data

Typ	TG-01	TG-02	TG-20	TG-04	TG-05
Emergency stop (2 NC contacts)	-	-			
Push button 1 LED green (change-over contact)			-		
Push button 2 LED red (NO contact)	-		-	-	
Emergency stop	1-42 V AC/DC max. 100 mA				
Push button	24 V AC/DC max. 1 A				
Operating voltage LED	24 V DC (12 V optional)				
Connection type	8-pole M12 x 1			12-pole M12 x 1	
Connector assignment (Plug side view)					
Mounting cutout					

All dimensions in mm.