

A person is shown from the side, wearing a grey long-sleeved shirt. They are looking down at a black smartwatch on their left wrist. The watch face is black with a red heart rate icon and the word 'HeartRate' in red. The person's right hand is resting on their left wrist. The background is a blurred grey wall.

OSRAM Opto Semiconductors

New Product Intro – SFH 2703 and 2713

June 2020

New Product Introduction

CHIPLED® - SFH 2703 and SFH 2713



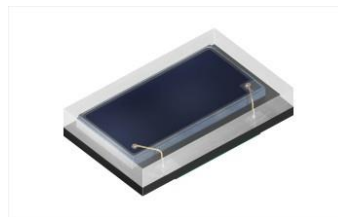
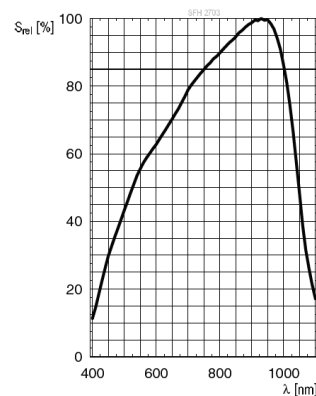
Introducing new CHIPLED® Photodiodes with optimized industrial design (chip to package ratio, low profile) and high sensitivity.

SFH 2703

Key Characteristics

- Package dimension: 3.2 x 2.0 x 0.6 mm³
- Spectral range of sensitivity: 400 ... 1100 nm
- Radiant sensitive area: 3.27 mm²
- typ. photocurrent: 1.1 μA
(E_e = 0.1 mW/cm²; λ = 530 nm; VR = 5 V)

Relative Spectral Sensitivity



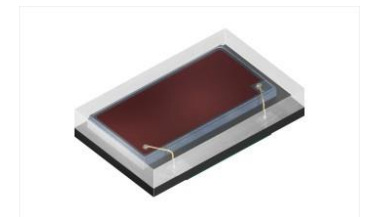
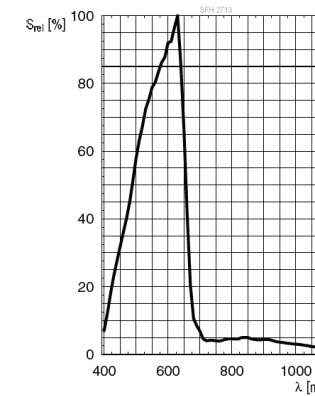
**Broadband Silicon
PIN Photodiode**

SFH 2713

Key Characteristics

- Package dimension: 3.2 x 2.0 x 0.6 mm³
- Spectral range of sensitivity: 400 ... 660 nm
- Radiant sensitive area: 3.27 mm²
- typ. photocurrent: 0.95 μA
(E_e = 0.1 mW/cm²; λ = 530 nm; VR = 5 V)


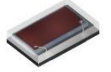
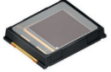

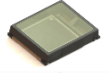
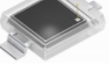

Relative Spectral Sensitivity



**IR-Cut Silicon
PIN Photodiode**

Vital Sign & Health Monitoring Detector Portfolio – Status June 2020

Broad portfolio, sensitivities optimized for Vital sign applications.

Part Type		Package dimensions (mm)	Radiant sensitive area (mm ²)	Wavelength max. sensitivity	Sensitivity range	Ordering Code
SFH 2703		3.2 x 2.0 x 0.6	3.27	940 nm	400 ... 1100 nm	Q65112A8147
SFH 2713		3.2 x 2.0 x 0.6	3.27	635 nm	400 ... 660 nm	Q65112A8151
SFH 2440		6.5 x 3.9 x 1.15	7.02	620 nm	400 ... 690 nm	Q65111A8524
SFH 2200		5.1 x 4.0 x 0.85	7.02	940 nm	300 ... 1100	Q65112A0250
SFH 2201		5.1 x 4.0 x 0.85	8.12	950 nm	300 ... 1100	Q65112A3981
SFH 2240		5.1 x 4.0 x 0.85	7.02	620 nm	400 ... 690 nm	Q65112A0060
SFH 2704		2.0 x 1.8 x 0.6	1.51	900 nm	400 ... 1100 nm	Q65112A7214

NEW