

Cat.5E Cross-Wired UTP Patch Cables - 4 Line

The wiring reverses the transmit and receive lines on these cables making them suitable for connecting one switch to a sister hub, traditionally through the uplink port.

Features:

- Manufactured using approved Cat.5 cable and connectors
- 2 pair cables NOT enhanced type - available in six colours for ease of use
- Fully tested to work to standard requirements
- Custom lengths can be quoted for upon request

Wiring Configuration

Pin No.	Colour	Pin No.
1	White/Orange	3
2	Orange/White	6
3	White/Green	1
6	Green/White	2

LENGTH	BEIGE	RED	BLUE	YELLOW	GREEN	BLACK
0.5m	1961-0.5X	1961-0.5XR	1961-0.5XB	1961-0.5XY	1961-0.5XG	1961-0.5XBK
1m	1961-1X	1961-1XR	1961-1XB	1961-1XY	1961-1XG	1961-1XBK
1.5m	1961-1.5X	1961-1.5XR	1961-1.5XB	1961-1.5XY	1961-1.5XG	1961-1.5XBK
2m	1961-2X	1961-2XR	1961-2XB	1961-2XY	1961-2XG	1961-2XBK
3m	1961-3X	1961-3XR	1961-3XB	1961-3XY	1961-3XG	1961-3XBK
5m	1961-5X	1961-5XR	1961-5XB	1961-5XY	1961-5XG	1961-5XBK
10m	1961-10X	1961-10XR	1961-10XB	1961-10XY	1961-10XG	1961-10XBK
15m	1961-15X	1961-15XR	1961-15XB	1961-15XY	1961-15XG	1961-15XBK
20m	1961-20X	1961-20XR	1961-20XB	1961-20XY	1961-20XG	1961-20XBK
25m	1961-25X	1961-25XR	1961-25XB	1961-25XY	1961-25XG	1961-25XBK
30m	1961-30X	1961-30XR	1961-30XB	1961-30XY	1961-30XG	1961-30XBK
50m	1961-50X	1961-50XR	1961-50XB	1961-50XY	1961-50XG	1961-50XBK

Cat.5E UTP Cross-Wired Patch Cables - 8 Line **NEW PRODUCT**

The new Cat.5E cross-wired patch cables are designed for use in copper Gigabit applications; acting as the link cable between Gigabit card to switch or switch to switch. Supplied as an unbooted cable, all eight lines of the cable are connected whereas only four lines with the Cat.5 version featured above.

Features:

- Cat.5E UTP cross-wired patch cables with all 8 lines connected - designed for use with copper Gigabit environments
- Full range of lengths and colours with backward compatibility with standard Cat.5E systems
- Supplied as unbooted cables which are fully tested with custom lengths available upon request

LENGTH	BEIGE	RED	BLUE	GREEN
0.5m	1965-0.5X	1965-0.5XR	1965-0.5XB	1965-0.5XY
1m	1965-1X	1965-1XR	1965-1XB	1965-1XY
1.5m	1965-1.5X	1965-1.5XR	1965-1.5XB	1965-1.5XY
2m	1965-2X	1965-2XR	1965-2XB	1965-2XY
3m	1965-3X	1965-3XR	1965-3XB	1965-3XY
5m	1965-5X	1965-5XR	1965-5XB	1965-5XY
10m	1965-10X	1965-10XR	1965-10XB	1965-10XY
15m	1965-15X	1965-15XR	1965-15XB	1965-15XY
25m	1965-25X	1965-25XR	1965-25XB	1965-25XY

Wiring Configuration

Pin No.	Colour	Pin No.
1	White/Orange	3
2	Orange/White	6
3	White/Green	1
4	Blue/White	7
5	White/Blue	5
6	Green/White	2
7	White/Brown	4
8	Brown/White	5

Cat.5 Cross-Wired Extension Cables - 8 Line

Designed for situations where a standard wired patch cable, that is already installed, requires crossing over. Manufactured in the UK, the wiring is the same as the cross-wired patch cables. Coloured cables can be made upon request.

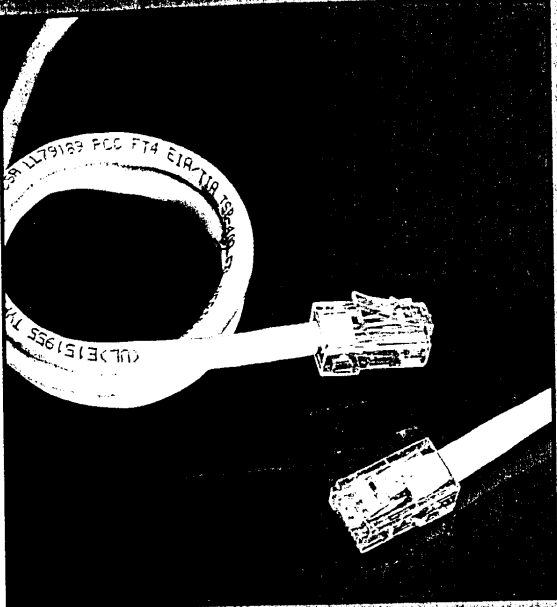
Features:

- High quality cables manufactured in the UK
- Made using high quality component parts
- Custom lengths & colours can be made upon request
- For wiring details refer to specification above

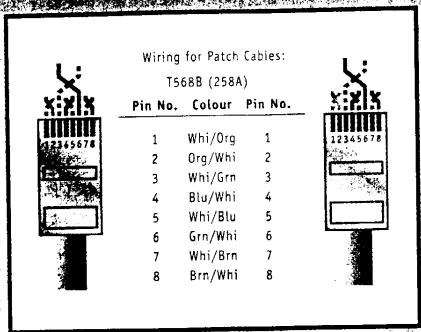
LENGTH

0.5m	1963-0.5X
1m	1963-1X
2m	1963-2X
3m	1963-3X

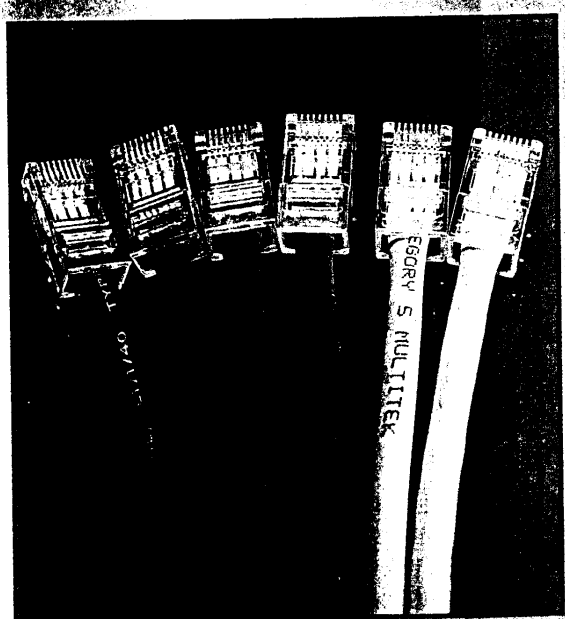
CAT.5 UTP PATCH CABLES



1961-1



Wiring Diagram



1961-1 1961-1

Premium Cat.5 UTP Patch Cables



Manufactured using quality sourced piece parts, each cable is tested and designed to meet Cat.5 requirements. All beige cables over 5m are manufactured using solid core cable, whereas shorter lengths use the more flexible stranded core version.

Features:

- Manufactured using quality piece parts:
- **Connectors: RJ45 plug, 50 micron gold plated**
- **Cable: EIA/TIA TSB40-A, Cat.5 UTP stranded / solid UL approved cable**
- Tested to 100 MHz frequency requirements
- Wired to 258A specification; covers data, voice and ISDN requirements
- Ex-stock availability for immediate despatch
- Quick turnaround, custom made length service available
- Choice of six colours for easy identification - follow individual cables at a glance within a network

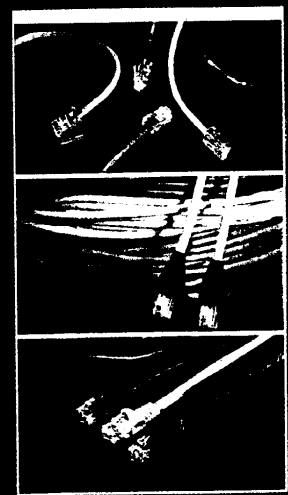
STOCK NO. DESCRIPTION

Beige UTP Patch Cables

1961-0.3	RJ45 UTP Patch Cable (0.3m)
1961-0.5	RJ45 UTP Patch Cable (0.5m)
1961-1	RJ45 UTP Patch Cable (1m)
1961-1.5	RJ45 UTP Patch Cable (1.5m)
1961-2	RJ45 UTP Patch Cable (2m)
1961-3	RJ45 UTP Patch Cable (3m)
1961-4	RJ45 UTP Patch Cable (4m)
1961-5	RJ45 UTP Patch Cable (5m)
1961-6	RJ45 UTP Patch Cable (6m)
1961-8	RJ45 UTP Patch Cable (8m)
1961-10	RJ45 UTP Patch Cable (10m)
1961-12	RJ45 UTP Patch Cable (12m)
1961-15	RJ45 UTP Patch Cable (15m)
1961-20	RJ45 UTP Patch Cable (20m)
1961-25	RJ45 UTP Patch Cable (25m)
1961-35	RJ45 UTP Patch Cable (35m)
1961-50	RJ45 UTP Patch Cable (50m)

130-187

- Patch cable range now covers all current requirements - Cat.5 UTP, Enhanced Cat.5 UTP and STP
- Available from stock in six different colours
- Manufactured using 50 micron gold connectors and UL approved cable
- Fully tested and supplied with at least a 12 month guarantee
- Quick turnaround service on custom made cables



See pages 76 to 86 for further details