

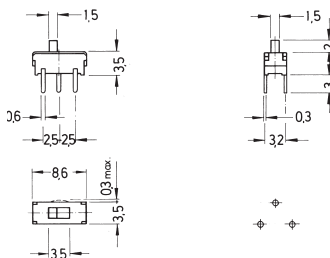
# Microminiature Slide Switches

## Specifications:

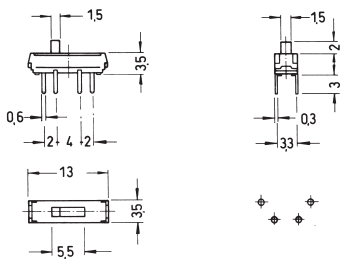
Contact rating:	12 V DC, 200 mA
Contact resistance:	< 50 mΩ
Insulation resistance:	> 100 MΩ at 500 V DC
Dielectric strength:	500 V, 50 Hz for the duration of 1 minute
Operating temperature:	- 10° to + 60° C
Mechanical life:	minimum 5000 operations
Contacts:	phosphor bronze, silver-plated
Terminals:	brass silver-plated
Contact timing:	non-shorting
Soldering conditions:	auto-soldering – max.: 3 sec ± 0,5 sec, 230° C ± 5° C

## Models: Switching functions

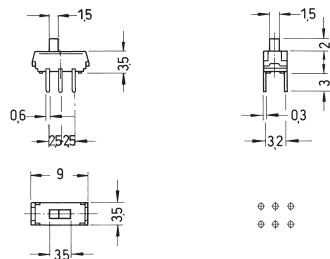
MMP 121 on on



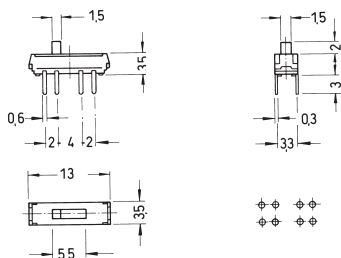
MMP 131 on on on



MMP 221 on on



MMP 231 on on on



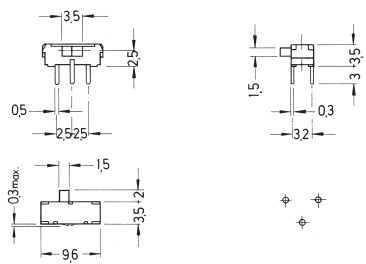


# Microminiature Slide Switches

**Models:**            Switching functions

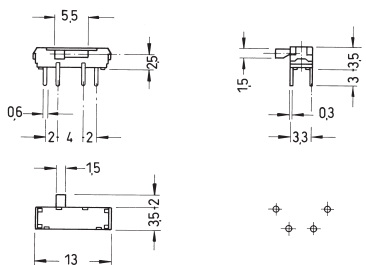
MMP 121 – R

on    on



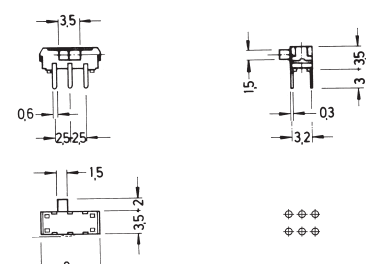
MMP 131 – R

on on on



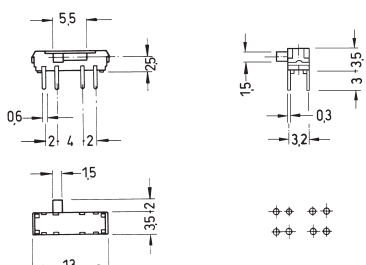
MMP 221 – R

on    on



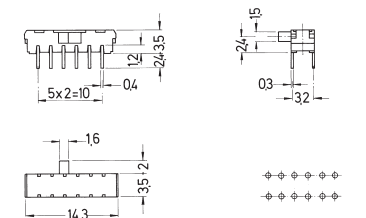
MMP 231 – R

on on on



MMP 421 – R

on    on



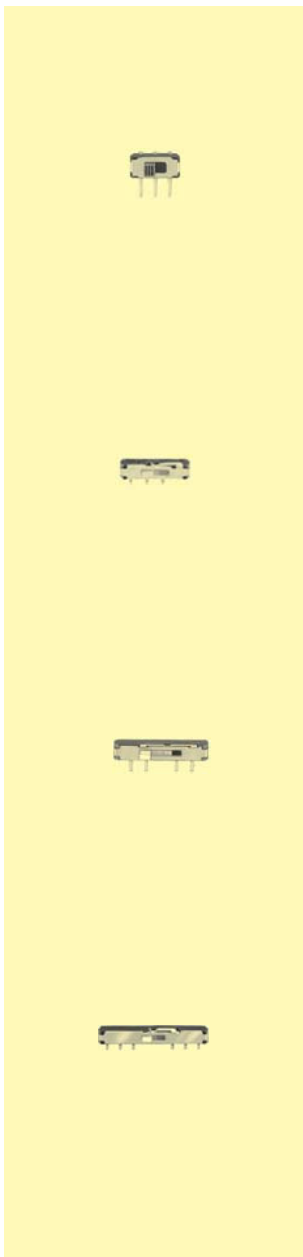
# Microminiature Slide Switches

## Specifications:

Contact rating:	12 V DC, 200 mA
Contact resistance:	< 50 mΩ
Insulation resistance:	> 100 MΩ at 500 V DC
Dielectric strength:	500 V, 50 Hz for the duration of 1 minute
Mechanical life:	minimum 5000 operations
Contacts:	phosphor bronze, silver-plated
Terminals:	brass, silver-plated
Contact timing:	non-shorting
Slide colour:	white; MMP 122 – R: black
Soldering conditions:	auto-soldering – max.: 3 sec ± 0,5 sec, 230° C ± 5° C

## Models:            Switching functions

MMP 122 – R	on	on				
MMP 124 – R	on	on				
MMP 134 – R	on	on	on			
MMP 224 – R	on	on				





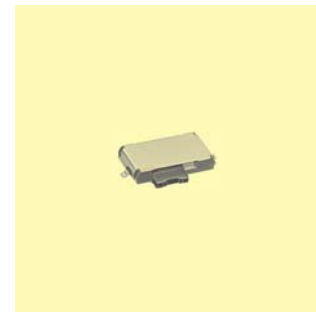
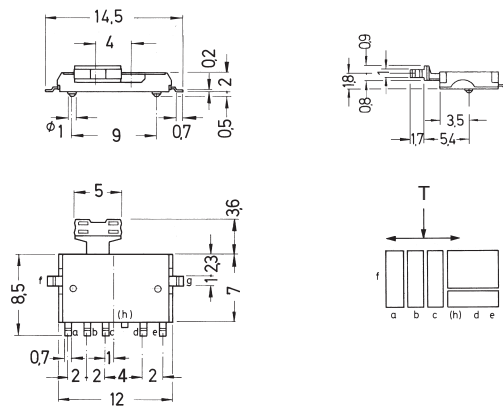
# Microminiature Slide Switches for SMT

## Specifications:

Contact rating:	12 V DC, 200 mA / 4 V DC, 300 mA
Contact resistance:	< 70 mΩ
Insulation resistance:	> 100 MΩ at 100 V DC
Dielectric strength:	500 V, 50 Hz for the duration of 1 minute
Mechanical life:	minimum 10 000 operations
Contacts:	phosphor bronze, gold-plated
Terminals:	brass, gold-plated
Contact timing:	non-shorting

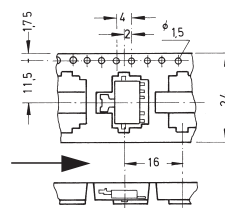
## Models:

MMSP 132      on on on  
with pushbutton function



Packaging:

1000 pcs/reel



Ø 330 mm

Soldering conditions:

reflow-soldering – max.: 60 sec, 260° C ± 2° C

Minimum quantity 1 reel

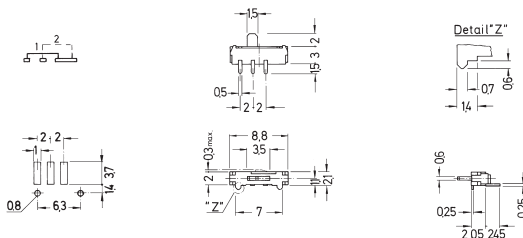
# Microminiature Slide Switches for SMT

## Specifications:

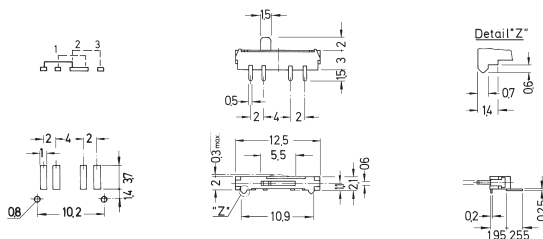
Contact rating:	12 V DC, 200 mA
Contact resistance:	< 50 mΩ
Insulation resistance:	> 100 MΩ at 500 V DC
Dielectric strength:	500 V, 50 Hz for the duration of 1 minute
Mechanical life:	minimum 5000 operations
Contacts:	phosphor bronze, silver-plated
Terminals:	brass, silver-plated
Contact timing:	non-shorting
Slide colour:	white

## Models: Switching functions

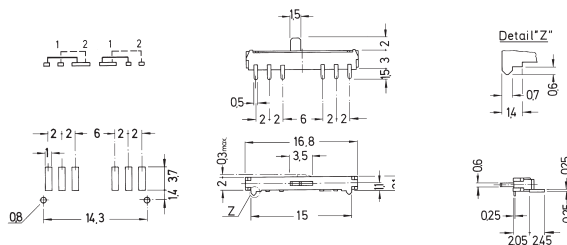
MMS 124 on on



MMS 134 on on on

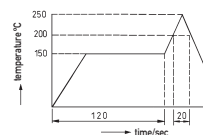


MMS 224 on on



Soldering conditions: reflow-soldering – max.: 20 sec, 200° C  
peak temperature: 250° C

Packaging: cardboard boxes, on tapes on request





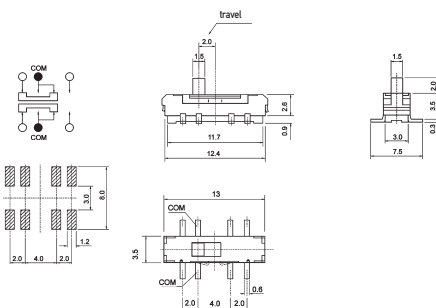
# Microminiature Slide Switches for SMT

## Specifications:

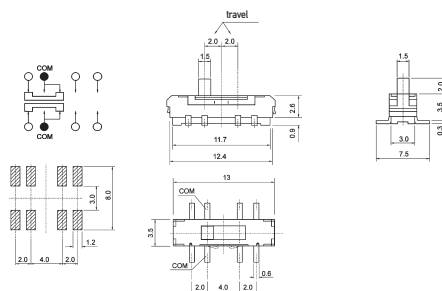
Contact rating:	12 V DC, 200 mA / 6 V DC, 300 mA
Contact resistance:	< 70 mΩ
Insulation resistance:	> 100 MΩ at 500 V DC
Dielectric strength:	500 V, 50 Hz for the duration of 1 minute
Mechanical life:	minimum 10 000 operations
Contacts/Terminals:	copper alloy, silver-plated
Contact timing:	non-shorting
Slide colour:	white

## Models: Switching functions

MMS 228 T     on     on

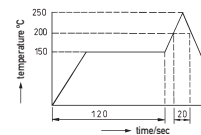


MMS 238 T     on on on

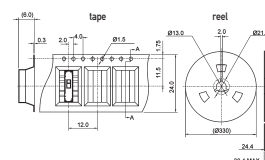


4

Soldering conditions:     reflow-soldering – max.: 20 sec, 200° C  
 peak temperature: 250° C



Packaging:     on tapes, 900 pieces / tape



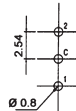
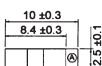
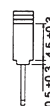
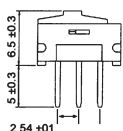
# Microminiature Slide Switches

## Specifications:

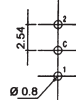
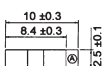
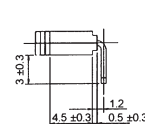
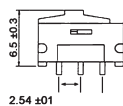
Contact rating:	0,2A, 24V DC / 0,5A, 12V DC
Contact resistance:	< 30 mΩ
Insulation resistance:	> 1000 MΩ at 500 V DC
Dielectric strength:	500 V, 50 Hz for the duration of 1 minute
Mechanical life:	minimum 10 000 operations
Contacts:	phosphor bronze, gold-plated
Terminals:	brass, gold-plated
Contact timing:	non-shorting
Slide colour:	white
Soldering conditions:	auto-soldering – max.: 3 sec ± 0,5 sec, 260° C ± 5° C

## Models:            Switching functions

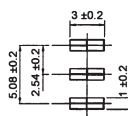
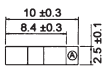
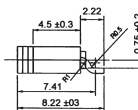
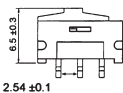
MMP 1010 D        on    on



MMP 1010 D-RA    on    on



MMS 1010 D-R     on    on



Soldering profile MMS 1010 D-R

