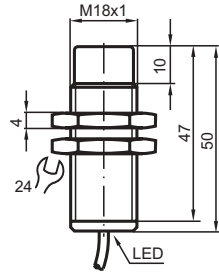


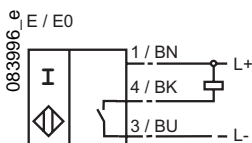
Basic series

8 mm not embeddable



Switching element function	NPN	Make function
Installation	not embeddable	
Rated operating distance s_n	8 mm	
Assured operating distance s_a	0 ... 6.48 mm	
Reduction factor r_{V2A}	0.7	
Reduction factor r_{AI}	0.5	
Reduction factor r_{Cu}	0.4	
Reduction factor r_{SI37}		
Operating voltage U_B	10 ... 30 V	
Operating current I_L	0 ... 200 mA	
Switching frequency f	0 ... 500 Hz	
No-load supply current I_0	≤ 18 mA	
Off-state current I_r	≤ 0.5 mA	
Voltage drop U_d	≤ 3 V	
Short circuit protection	pulsing	
Polarity reversal protected	yes	
Indication of the switching state	all direction LED, yellow	
Ambient temperature	-25 ... 70 °C (248 ... 343 K)	
Protection degree	IP67	
Connection type	2 m, PVC-cable	
Core cross-section	0.34 mm ²	
Housing material	brass, nickel plated	
Sensing face	PBT	
Standard conformity	EN 60947-5-2	

Connection



06.11.2001