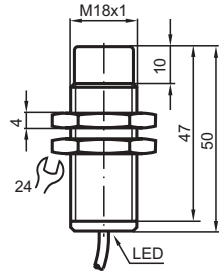


## Basic series

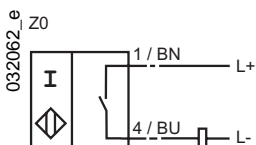
8 mm not embeddable



CE

|                                   |                               |               |
|-----------------------------------|-------------------------------|---------------|
| Switching element function        | DC                            | Make function |
| Installation                      | not embeddable                |               |
| Rated operating distance $s_n$    | 8 mm                          |               |
| Assured operating distance $s_a$  | 0 ... 6.5 mm                  |               |
| Reduction factor $r_{V2A}$        | 0.73                          |               |
| Reduction factor $r_{Al}$         | 0.43                          |               |
| Reduction factor $r_{Cu}$         | 0.42                          |               |
| Operating voltage $U_B$           | 6 ... 60 V                    |               |
| Operating current $I_L$           | 4 ... 100 mA                  |               |
| Switching frequency $f$           | 0 ... 1000 Hz                 |               |
| Off-state current $I_r$           | $\leq 1$ mA                   |               |
| Voltage drop $U_d$                | $\leq 6$ V                    |               |
| Short circuit protection          | no                            |               |
| Polarity reversal protected       | tolerant                      |               |
| Indication of the switching state | all direction LED, yellow     |               |
| Ambient temperature               | -25 ... 70 °C (248 ... 343 K) |               |
| Protection degree                 | IP67                          |               |
| Connection type                   | 2 m, PVC-cable                |               |
| Core cross-section                | 0.34 mm <sup>2</sup>          |               |
| Housing material                  | brass, nickel plated          |               |
| Sensing face                      | PBT                           |               |
| Standard conformity               | EN 60947-5-2                  |               |

## Connection



06.11.2001