

New! 1400N SERIES - MOM. SNAP-IN PUSHBUTTON SWITCHES

FEATURES

- Snap-in mounting with square actuator.
- Single pole NO, NC & NC/NO actions.
- Solder lug, straight p.c. or quick-connect terminals.

MATERIALS

Case: Polyamide, black
 Actuator: Polyamide
 Contacts: Silver plated copper

SPECIFICATIONS

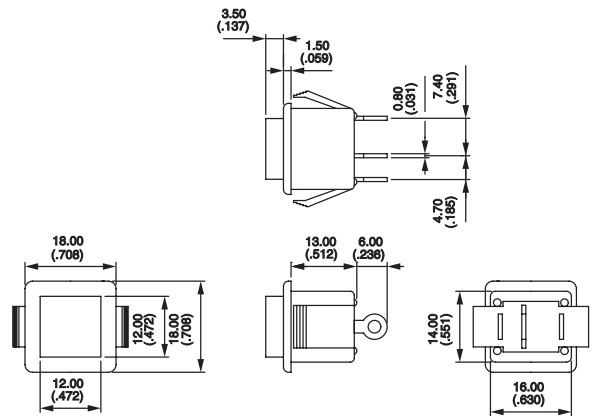
Maximum ratings (resistive load): 2 Amps @250VAC pr 4 Amps @125VAC
 Initial contact resistance: 10 milliohms at 1A 2VDC
 Insulation resistance: 1000 megohms min. (500 VDC)
 Dielectric withstanding voltage: 1500 Vrms between terminals - 2000 Vrms between terminals & metal panel
 Electrical life: 10,000 cycles min.
 Panel thickness: .078" (2mm) max.
 Operating temperature range: -20 °C to +55 °C

Solder lug or quick-connect terminals



- 1412NC2 Normally Closed
 1413NC2 Normally Open
 1415NC2 Changeover

The '2' in model no. indicates black actuator.
 Substitute '3' for green, '6' for red or '7' for ivory, if desired.
 Substitute 'NB' for 'N' in model number for quick-connect terminals.

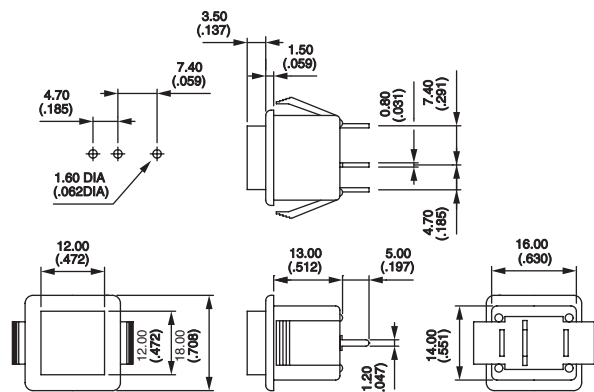


Straight printed circuit terminals

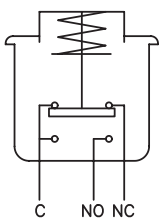


- 1442NC2 Normally Closed
 1443NC2 Normally Open
 1445NC2 Changeover

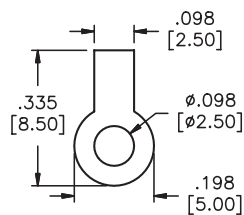
The '2' in model no. indicates black actuator.
 Substitute '3' for green, '6' for red or '7' for ivory, if desired.



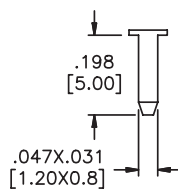
CROSS SECTION



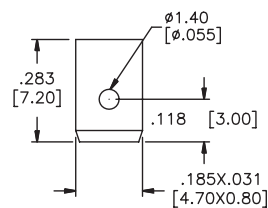
TERMINALS



SOLDER LUG

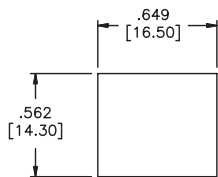


PRINTED CIRCUIT



QUICK-CONNECT
 .185"X.031" (4.7X0.8mm)

PANEL CUT-OUT



SPECIFICATIONS SUBJECT TO CHANGE WITHOUT NOTICE

C