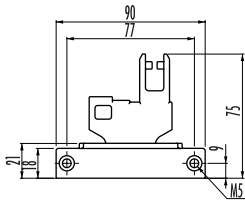
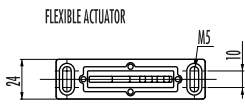
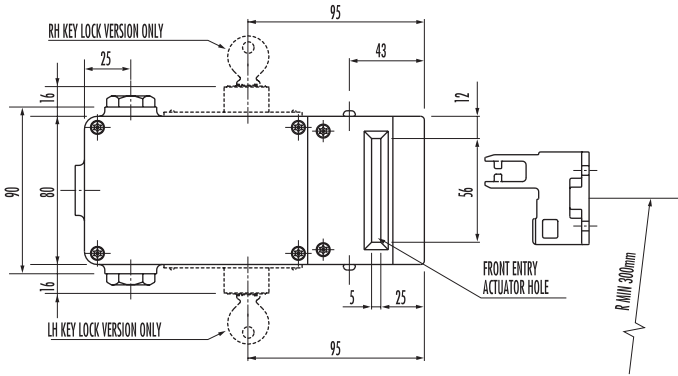
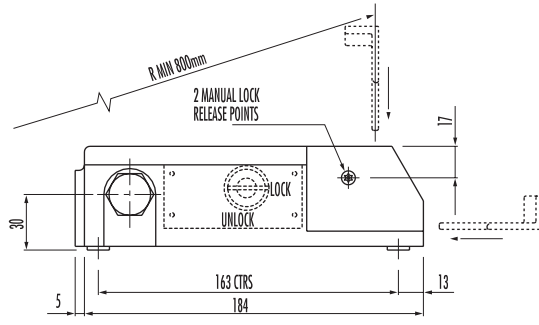
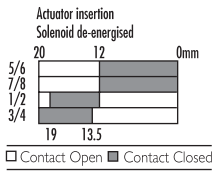
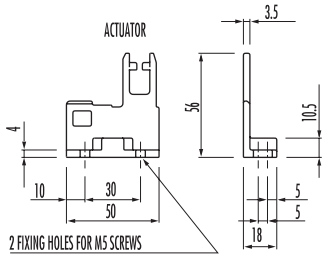
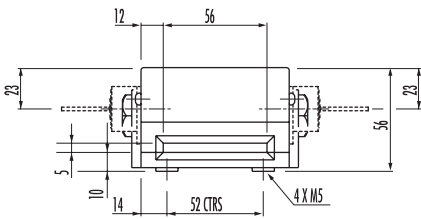


Atlas 5

dimensions



specifications

Standards	EN 60947-5-1, EN1088, EN292, EN60204-1
Approvals	CE marked for all applicable directives, cULus
Safety contacts	
Atlas 5	2 N/C positive break
Atlas 5 trapped key (left hand)	2 N/C positive break
Atlas 5 trapped key (right hand)	1 N/C positive break
Solenoid monitoring contacts	2 N/C
Utilisation category	AC 15
AC (Ue) (Ie)	500 V 250 V 100 V 1 A 2 A 5 A
DC	250 V 0.5 A, 24 V 2 A
Max. switched current/voltage/load	500 V/500 VA
Thermal current (Ith)	10 A
Minimum current	5 V, 5mA DC
Safety contact gap	> 2mm contact block
Rtd insulation voltage	(Ui) 500 V
Rtd impulse withstand voltage	(Uimp) 2500 V
Auxiliary contacts	1 N/O
Auxiliary solenoid monitoring contacts	1 N/O
Pollution degree	3
Actuator travel for positive opening	8 mm
Break contact minimum force	12N
Maximum actuation speed	160 mm per sec
Maximum actuator frequency	2 cycle per sec
Case material	Die-cast alloy
Actuator material	Stainless steel

Protection	IP65
Conduit entry	3 x M20 or 3 x Pg 13.5 or 3 x 1/2"NPT
Operating temperature	-10°C to +60°C
Mounting	4 x M5
Mechanical life	1 x 10 ⁶ operations
Electrical life	1 x 10 ⁶ operations
Weight	1200 g
Colour	Red
Cleaning	May be high pressure steam cleaned
Maximum holding force	5500N
Minimum operating radius	300 mm end entry, 800 mm front entry
Power supply	24 V AC/DC or 110 V AC or 230V AC (solenoid)
Solenoid rating	100% duty

***Note:** The safety contacts of the Guardmaster switches are described as normally closed (N/C), i.e. with the guard closed, actuator in place (where relevant) and the machine able to be started

T
F
E