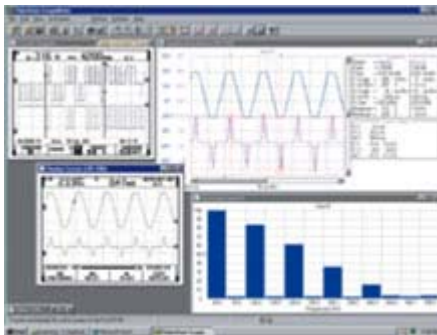


FlukeView® Software for documenting, archiving and analysis

Product Home



FlukeView for Windows® helps you get more out of your ScopeMeter by:

- Documenting - transfer waveforms, screens and measurement data from the ScopeMeter to a PC. Print or import the data into your report.
- Adding user text to individual ScopeMeter settings - providing guidance to the operator when recalling a set-up.
- Archiving - create a library of waveforms with your comments for easy reference and comparison. Store complete Replay cycles for analysis of waveform changes. Store complete memory content of the ScopeMeter on your PC for back-up purposes.
- Waveform Compare - store reference waveforms, add operator instructions, and send both to the ScopeMeter for waveform comparison and "Pass/Fail" testing.
- Analysis - use cursors, perform spectrum analysis or export data to other analysis programs.

[Download the latest update, or the](#)