

0910 - 0911 Push Button Snap Action Switches 15(4)A 250Vac



15(4)A 250Vac T85

UL 15A, 1/2hp 125-250Vac 85°C,
UL file E91973, CSA file LR98589

Approvals apply to switch mechanism only (34340350COLO00)
μ contact gap
Full rating details and technical data on pages 50 & 51
Ratings are at full plunger travel



C0911KB ---



C0911VA ---



C0911RB ---



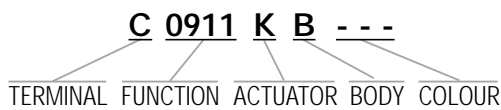
C0911PB ---



C0911EB ---

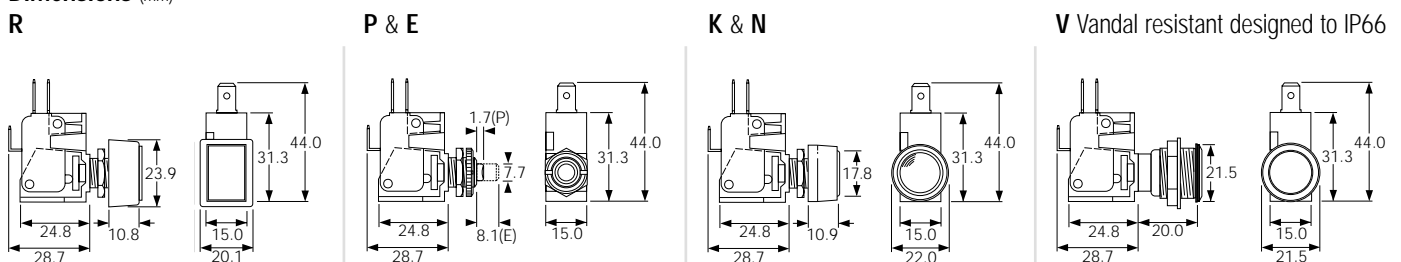


C0911BB ---



TERMINAL	FUNCTION	ACTUATOR	BODY	OPTIONS
<p>C</p> <p>6.3 x 0.8</p>	<p>0910</p> <p>ON - ON (alternate)</p> <p>0910 is available with K and N actuators only</p> <p>0911</p> <p>ON - ON (momentary)</p>	<p>R Rectangular bezel</p> <p>B Large Contact factory for details</p> <p>E Long</p> <p>P Short</p> <p>K with satin chrome bezel</p> <p>N with nylon bezel</p> <p>V Vandal resistant (911 only)</p>	<p>B</p> <p>N/A for V Actuator</p> <p>Panel Cut-out</p> <p>Panel thickness Both nuts 2.5mm No backnut 4.0mm</p> <p>A</p> <p>Stainless steel chamfer profile bezel for V actuator only</p> <p>Panel Cut-out</p> <p>Panel thickness 8.0mm</p>	<p>Colour</p> <p>Call factory for custom colours A full range is available for large orders</p> <p>Cover M323</p> <p>Available for "P" actuator only</p> <p>Covers have internal nylon nut</p>

Dimensions (mm)





C1700RO ---



C1700HO ---



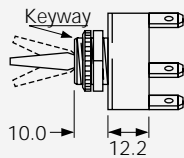
C1760RO ---



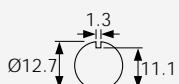
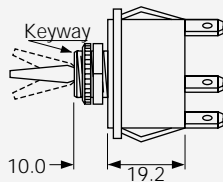
C1750HO ---

BODY

0
Single pole



0
Double pole



Panel hole (all types)
Panel thickness (Max)
Both nuts - 3.5mm
Less backnut - 6.5mm

OPTIONS

Neck Seal M539
Rubber -57T145
(H & R Actuators)
Actuator visible



Cover M1080
Rubber -57T145
(R Actuator only)



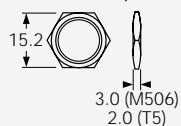
Cover M331
PVC -5T85
(R Actuator only)



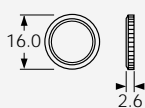
Covers have internal nylon nuts

Fixing nuts (Standard is M506 & T92)

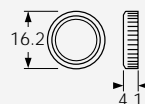
T5 Hex brass
M506 Hex nylon



T92 Knurled brass



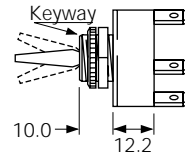
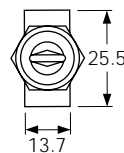
M279 Knurled nylon



DIMENSIONS (mm)

Single Pole

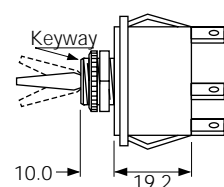
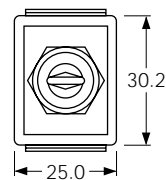
(C terminals shown)



Optional
P232 plate
SP or DP

Double Pole

(C terminals shown)



Optional terminal barrier M441 is available