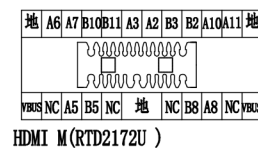
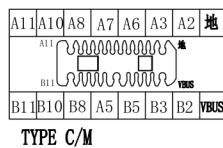
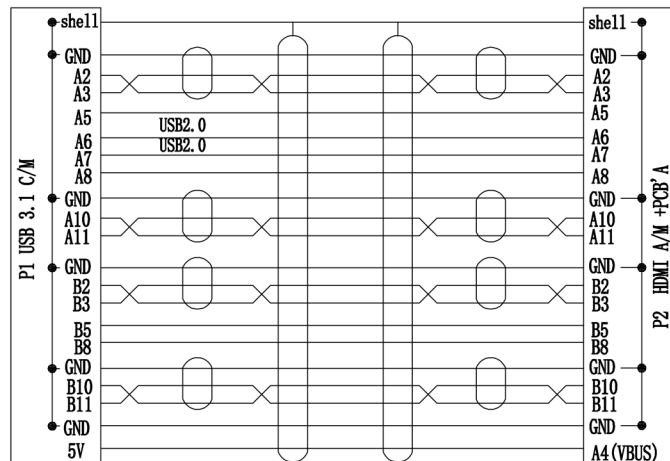
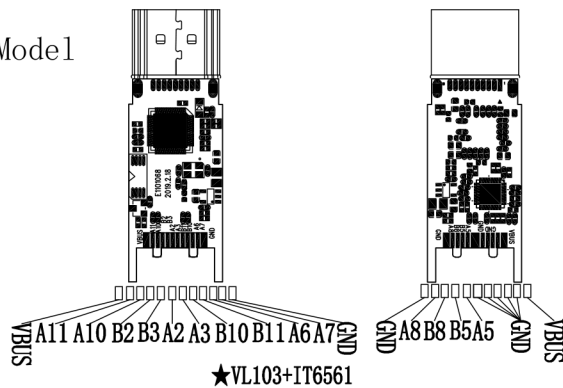
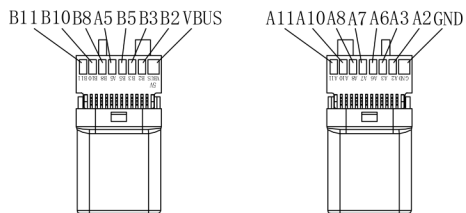
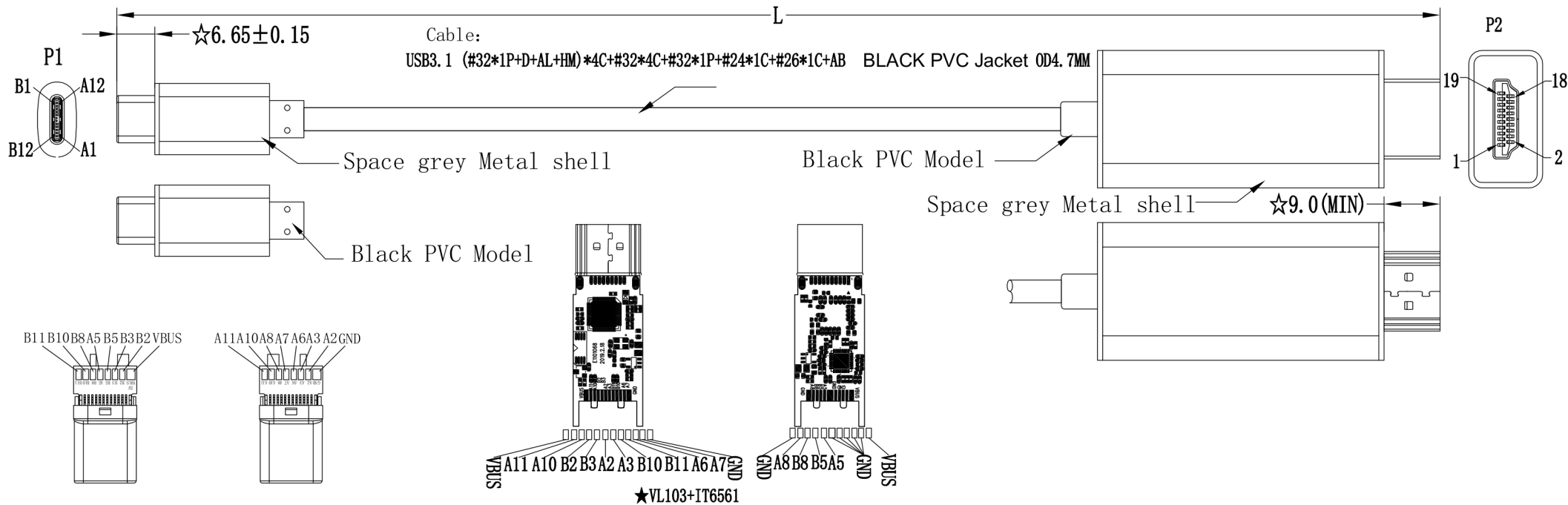


1. 100% OPEN SHORT MIS WIRE TEST
2. CONTACT RESISTANCE: 5 OHM MAX
3. INSULATION RESISTANCE: 5M OHM MIN
4. HI-POT TEST: DC 300V/10ms
5. PASS 4K\*2K@30HZ EST

CONSUMER ITEM	LENGTH (mm)
PSG3313	1000 ± 30
PSG3314	4500 ± 30

Type C/M Gold plated

HDMI A/M Gold plated



				DESCRIPTION	FINISHED PRODUCT'S FIGURE	SCALE	FIT	UNITS: MM	1RD ANGLE
				MODEL NO.		△			
APPROVED	CHECKED	DRAWING	DESIGNED	DRAWING NO.	256-043	△			
				FINISHING		△	2020/6/23		A1
				MATERIAL		SYM	DATE		REVISION

QR-025 2007.05.03, A1