

SC-7P1-GG

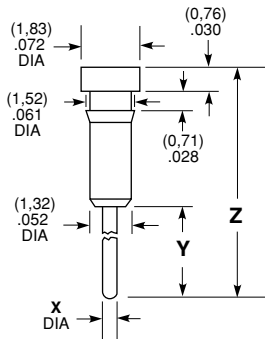
STANDARD, LOW PROFILE &

Specifications: SC

- Contact:** BeCu
- Shell:** Brass
- GG Plating:** 30µ" (0,76µm) Au over 50µ" (1,27µm) Ni on contact; 10µ" (0,25µm) Au over 50µ" (1,27µm) Ni on shell
- GT Plating:** 30µ" (0,76µm) Au over 50µ" (1,27µm) Ni on contact; Sn over 50µ" (1,27µm) Ni on shell
- TT Plating:** Sn over 50µ" (1,27µm) Ni on contact; Sn over 50µ" (1,27µm) Ni on shell
- ST Plating:** 10µ" (0,25µm) Au over 50µ" (1,27µm) Ni on contact; Sn over 50µ" (1,27µm) Ni on shell
- Current Rating:** 1 A
- Contact Resistance:** 10 mΩ max
- Insertion Force (SC):** 9 oz (2,50N) avg, 16 oz (4,45N) max
- Withdrawal Force (SC):** 2.5 oz (0,70N) avg, 1.5 oz (0,42N) min
- Insertion Force (EZ):** 2.5 oz (0,70N) avg, 5.5 (1,53N) oz max
- Withdrawal Force (EZ):** 2.0 oz (0,56N) avg, 0.35 oz (0,10mm) min
- Lead DIA Accepted:** .015" to .022" (0,38mm to 0,56mm) and most IC leads

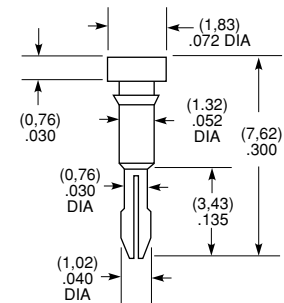
SC-1P1-, SC-6P1-, SC-1P3-, SC-2P1- EZ-1P1-, EZ-6P1-, SC-7P1

SC-1L1- EZ-1L1-

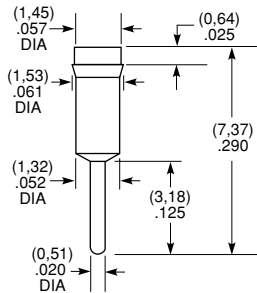


Part No.	X DIA	Y ±.010	Z ±.015
SC-1P1- EZ-1P1-	(0,51) .020	(3,18) .125	(7,62) .300
SC-6P1- EZ-6P1-	(0,51) .020	(4,57) .180	(8,89) .350
SC-1P3-	(0,64) .025	(10,41) .410	(15,24) .600
SC-2P1-	(0,89) .035	(12,95) .510	(17,86) .703
SC-7P1-	(0,51) .020	(7,06) .278	(11,25) .443

Insertion Depth (SC-1P1, SC-1L1, SC-6P1, SC-7P1) = .95" to .145" (2,41mm to 3,68mm)
 Insertion Depth (SC-2P1) = .125" to .157" (3,18mm to 3,99mm)
 Insertion Depth (SC-1P3) = .095" to .138" (2,41mm to 3,51mm)
 Plating Available (SC-1P1, SC-1L1) = GG, GT, TT, ST
 Plating Available (SC-6P1, SC-2P1, SC-7P1) = GG, GT

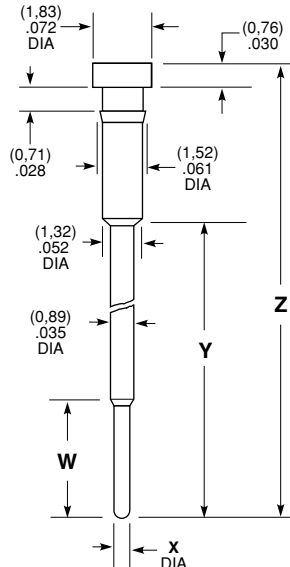


SC-1P2-



Insertion Depth = .095" to .145" (2,41mm to 3,68mm)
 Plating Available = GG, GT

SC-2P3-, SC-2P2- EZ-2P3-, EZ-2P2-

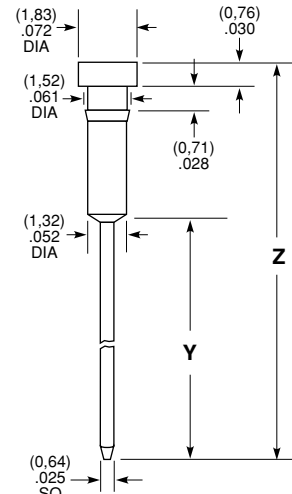


Plating Available = GG, GT

Part No.	X DIA	W ±.010	Y ±.015	Z ±.015
SC-2P3- EZ-2P3-	(0,51) .020	(4,32) .170	(8,86) .349	(13,77) .542
SC-2P2- EZ-2P2-	(0,46) .018	(3,81) .150	(12,95) .510	(17,86) .703

Insertion Depth (SC-2P2) = .125" to .145" (3,18mm to 2,41mm)
 Insertion Depth (SC-2P3) = .125" to .170" (3,18mm to 4,32mm)

SC-1W1- EZ-1W1-



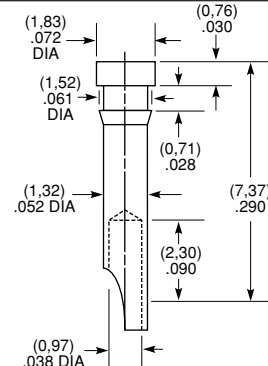
Part No.	Y ±.010	Z ±.015
SC-1W1-XX-1 EZ-1W1-XX-1	(12,95) .510	(17,86) .703
SC-1W1-XX-2 EZ-1W1-XX-2	(9,14) .360	(14,05) .553
SC-1W1-XX-3 EZ-1W1-XX-3	(6,60) .260	(11,51) .453

Insertion Depth = .125" to .157" (3,18mm to 3,99mm)
 Plating Available = GG, GT, TT

RECOMMENDED PC HOLE SIZE:

LEAD SIZE	SOLE SIZE
(0,46) .018 DIA	(0,61) .024 DIA
(0,51) .020 DIA	(0,66) .026 DIA
(0,64) .025 DIA	(0,79) .031 DIA
(0,76) .030 DIA	(0,91) .036 DIA
(0,89) .035 DIA	(1,04) .041 DIA
(1,14) .045 DIA	(1,30) .051 DIA
(1,32) .052 DIA	(1,47) .058 DIA
(0,46) .018 SQ	(0,76) .030 DIA
(0,64) .025 SQ	(1,02) .040 DIA
(1,14) .045 SQ	(1,75) .069 DIA
(0,20) .008 x (0,71) .028	(0,89) .035 DIA
(0,25) .010 x (0,51) .020	(0,71) .028 DIA
(0,41) .016 x (0,51) .020	(0,79) .031 DIA
(0,41) .016 x (0,61) .024	(0,89) .035 DIA
(0,41) .016 x (0,79) .031	(1,04) .041 DIA

SC-2S1-

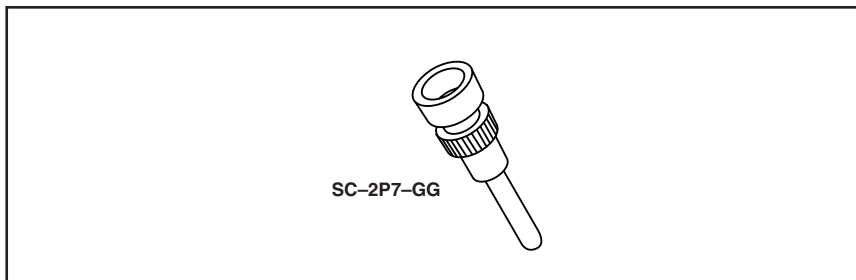


Insertion Depth = .095" to .145" (2,41mm to 3,68mm)
 Plating Available = GG, GT

Note: Some sizes, styles and options are non-standard, non-returnable.

Due to technical progress, all designs, specifications and components are subject to change without notice.

WWW.SAMTEC.COM



SURFACE MOUNT SOCKETS SC, SK, SP SERIES

Specifications: SC, SP, SK

Contact:

BeCu

Shell:

Brass, except SK-5P1
Phosphor Bronze

-GG Plating:

30μ" (0,76μm) Au over 50μ" (1,27μm) Ni on contact; 10μ" (0,25μm) Au over 50μ" (1,27μm) Ni on shell

-GT Plating:

30μ" (0,76μm) Au over 50μ" (1,27μm) Ni on contact; Sn over 50μ" (1,27μm) Ni on shell

-TT Plating:

Sn over 50μ" (1,27μm) Ni on contact; Sn over 50μ" (1,27μm) Ni on shell

Current Rating: 1 A

Contact Resistance:

10 mΩ max

Insertion Force (SC):

9 oz (2,50N) avg, 16 oz (4,45N) max (.017" (0,43mm) DIA probe)

Withdrawal Force (SC):

2.5 oz (0,70N) avg, 1.5 oz (0,42N) min (after 12 insertions with .017" (0,43mm) DIA probe)

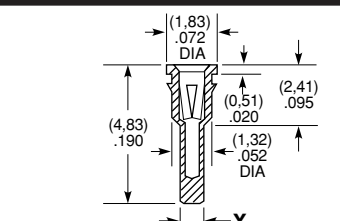
Insertion Force (EZ):

2.5 oz (0,70N) avg, 5.5 (1,53N) oz max (.018" (0,46mm) DIA probe except EZ-4P1 & EZ-5P1 with .017" (0,43mm) DIA probe)

Withdrawal Force (EZ):

2.0 oz (0,56N) avg, 0.35 oz (0,10N) min (after 12 insertions with .018" (0,46mm) DIA probe except EZ-4P1 & EZ-5P1 with .017" (0,43mm) DIA probe)

SC-5P1-, SC-9P1- EZ-5P1-, EZ-9P1-

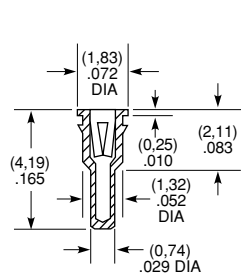


Part No.	X DIA
SC-5P1- EZ-5P1-	(0,76) .030
SC-9P1-	(0,86) .034

Insertion Depth (SC-5P1) = .080" to .150" (2,03mm to 3,81mm)
Insertion Depth (SC-9P1) = .070" to .165" (1,78mm to 4,19mm)
Lead DIA Accepted: .016" to .020" (0,41mm to 0,51mm)

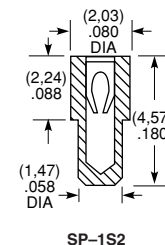
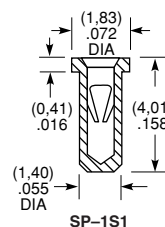
Plating Available (SC-5P1, EZ-5P1) = GG, GT, TT
Plating Available (SC-9P1) = GG, GT

SC-8P1-



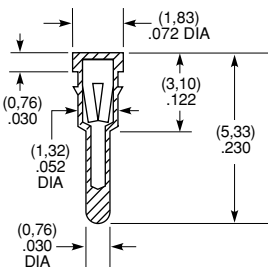
Insertion Depth = .085" to .140" (2,16mm to 3,56mm)
Lead DIA Accepted: .016" to .020" (0,41mm to 0,51mm)
Plating Available = GG, GT, TT

SP-1S1-, SP-1S2-



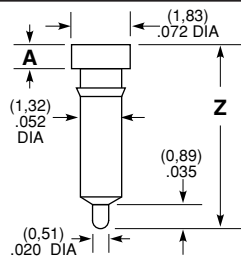
Insertion Depth (SP-1S1) = .090" to .140" (2,29mm to 3,56mm)
Insertion Depth (SP-1S2) = .090" to .150" (2,29mm to 3,81mm)
Lead DIA Accepted = .020" to .025" (0,51mm to 0,64mm)
Plating Available = GG, GT

SC-3P1- EZ-3P1-



Insertion Depth = .105" to .170" (2,67mm to 4,32mm)
Lead DIA Accepted: .015" to .020" (0,38mm to 0,51mm)
Plating Available = GG, GT, TT

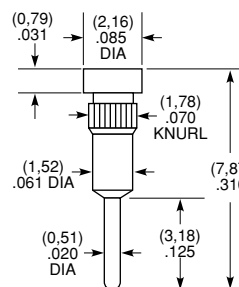
SC-1M1-, SC-1M2- EZ-1M1-, EZ-1M2-



Part No.	A	Z ±.010
SC-1M1- EZ-1M1-	(0,76) .030	(5,08) .200
SC-1M2- EZ-1M2-	(0,51) .020	(4,24) .167

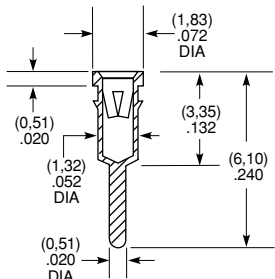
Insertion Depth (SC-1M1) = .095" to .145" (2,41mm to 3,68mm)
Insertion Depth (SC-1M2) = .080" to .105" (2,03mm to 2,67mm)
Lead DIA Accepted: .016" to .021" (0,41mm to 0,53mm)
Plating Available = GG, GT

SC-2P7-



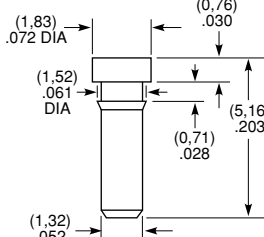
Insertion Depth = .135" to .165" (3,43mm to 4,19mm)
Lead DIA Accepted = .025" to .030" (0,64mm to 0,76mm)
Plating Available = GG, GT, TT

SC-4P1- EZ-4P1-



Insertion Depth = .080" to .105" (2,03mm to 2,67mm)
Lead DIA Accepted: .016" to .021" (0,41mm to 0,53mm)
Plating Available = GG, GT, TT

SC-1S1- EZ-1S1-



Insertion Depth = .125" to .157" (3,18mm to 3,99mm)
Lead DIA Accepted = .015" to .022" (0,38mm to 0,56mm)
Plating Available = GG, GT

RECOMMENDED PC HOLE SIZE:

LEAD SIZE	HOLE SIZE
(0,46) .018 DIA	(0,61) .024 DIA
(0,51) .020 DIA	(0,66) .026 DIA
(0,64) .025 DIA	(0,79) .031 DIA
(0,76) .030 DIA	(0,91) .036 DIA
(0,89) .035 DIA	(1,04) .041 DIA
(1,14) .045 DIA	(1,30) .051 DIA
(1,32) .052 DIA	(1,47) .058 DIA
(0,46) .018 SQ	(0,76) .030 DIA
(0,64) .025 SQ	(1,02) .040 DIA
(1,14) .045 SQ	(1,75) .069 DIA
(0,20) .008 x (0,71) .028	(0,89) .035 DIA
(0,25) .010 x (0,51) .020	(0,71) .028 DIA
(0,41) .016 x (0,51) .020	(0,79) .031 DIA
(0,41) .016 x (0,61) .024	(0,89) .035 DIA
(0,41) .016 x (0,79) .031	(1,04) .041 DIA

Note:

Some sizes, styles and options are non-standard, non-returnable.

Due to technical progress, all designs, specifications and components are subject to change without notice.

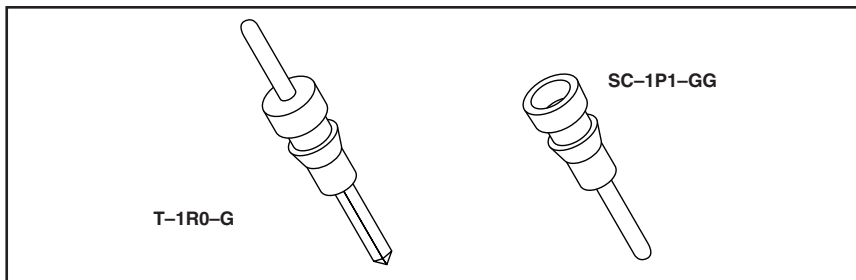
WWW.SAMTEC.COM

SAMTEC USA • Tel: 1-800-SAMTEC-9 or 812-944-6733 • Fax: 812-948-5047 SAMTEC UK • Tel: 01236 739292 • Fax: 01236 727113 SAMTEC GERMANY • Tel: +49 (0) 89 / 89460-0 • Fax: +49 (0) 89 / 89460-299

SAMTEC FRANCE • Tel: 01 60 95 06 60 • Fax: 01 60 95 06 61 SAMTEC ITALY • Tel: 39 039 6890337 • Fax: 39 039 6890315

SAMTEC ASIA PACIFIC • Tel: 65 6745-5955 • Fax: 65 6841-1502 SAMTEC CHINA • Tel: 86-21-5385-4089 • Fax: 86-21-5385-4047 SAMTEC JAPAN • Tel: 81-424-42-8318 • Fax: 81-424-42-8319

SAMTEC TAIWAN • Tel: 886-02-2364-6077 • Fax: 886-02-2367-9531 SAMTEC HONG KONG • Tel: 852-26904858 • Fax: 852-26904842 SAMTEC ANZ • Tel: 613 9512 7747 • Fax: 613 9512 7745



LEAD SOCKETS & TERMINALS ^{SC}_{T, S}

Specifications: SC-1W3, 1P4, 2P4

Contact: BeCu Shell: Brass

-GG Plating:

20µ" (0,51µm) Au over 50µ" (1,27µm) Ni on contact, except SC-2P4 30µ" (0,76µm) Au; 10µ" Au over 50µ" (1,27µm) Ni on shell

-GT Plating:

20µ" (0,51µm) Au over 50µ" (1,27µm) Ni on contact, except SC-2P4 30µ" (0,76µm) Au; Sn over 50µ" (1,27µm) Ni on shell

Current Rating:

5 A

Contact Resistance:

10 mΩ max

Insertion Force:

6.5 oz (1,81N) avg, 13 oz (3,62N) max (.032" (0,81mm) DIA probe)

Withdrawal Force: 3 oz (0,83N) avg, 2 oz (0,56N) min

(.032" (0,81mm) DIA probe)

Specifications: SC-2P8, 2P9

Contact: BeCu

Shell: Brass

-GG Plating

20µ" (0,51µm) Au over 50µ" (1,27µm) Ni on contact; 10µ" (0,25µm) Au over 50µ" (1,27µm) Ni on shell

-GT Plating:

20µ" (0,51µm) Au over 50µ" (1,27µm) Ni on contact; 200µ" (5,08µm) Sn over 50µ" (1,27µm) Ni on shell

Current Rating:

10 A

Contact Resistance:

10 mΩ max

Insertion Force: SC-2P9

=32 oz (8,90N) max (.050" (1,27mm) DIA probe); SC-2P8

=16 oz (4,45N) max (.040" (1,02mm) DIA probe)

Withdrawal Force: SC-2P9

2 oz (0,56N) min (.050" (1,27mm) DIA probe) SC-2P8

=4 oz (1,11N) min (.040" (1,02mm) DIA probe)

Specifications: T, S

-G Plating:

Au over 50µ" (1,27µm) Ni

-T Plating:

Sn over 50µ" (1,27µm) Ni or 100µ" (2,54µm) Cu

Current Rating:

1A except T-1S6 is 5A

Note:

Some sizes, styles and options are non-standard, non-returnable.

SC-1W3-, SC-1P4-, SC-2P4-

Part No.	X	Y	Z REF
SC-1W3-	(0,64) .025 SQ	(12,95) .510	(19,30) .760
SC-1P4-	(0,76) .030 DIA	(3,18) .125	(9,53) .375
SC-2P4-	(0,91) .036 DIA	(12,95) .510	(19,30) .760

Insertion Depth = .175" (4,45mm) to .215" (5,46mm)
Lead DIA Accepted = .032" (0,81mm) to .038" (0,97mm)
Plating Available = GG, GT

SC-2P8- SC-2P9-

Part No.	X DIA	Y
SC-2P8-	(2,08) .082	(6,10) .240
SC-2P9-	(2,59) .102	(6,86) .270

Insertion Depth (SC-2P8) = .165" (4,91mm) to .220" (5,59mm)
Lead DIA Accepted (SC-2P8) = .035" (0,89mm) to .045" (1,14mm)
Insertion Depth (SC-2P9) = .170" (4,32mm) to .205" (5,21mm)
Lead DIA Accepted (SC-2P9) = .045" (1,14mm) to .055" (1,40mm)
Plating Available = GG, GT

T-1S5-

Material: Brass
-G = 20µ" (0,51µm) Gold
-T = 200µ" (5,08µm) Tin

T-1S2- T-1S1-

Material: Brass
-G = 20µ" (0,51µm) Gold
-T = 200µ" (5,08µm) Tin

S-1W1-

Part No.	Y ±.010	Z ±.015
S-1W1-1-	(12,95) .510	(17,86) .703
S-1W1-2-	(9,14) .360	(14,05) .553
S-1W1-3-	(6,60) .260	(11,51) .453

Material: Brass
-G = 10µ" (0,25µm) Gold
-T = 200µ" (5,08µm) Tin

T-1S6-

PART NO.	B
T-1S6-07-X-2	(10,92) .430
T-1S6-08-X-2	(13,46) .530
T-1S6-09-X-2	(18,54) .730
T-1S6-10-X-2	(21,08) .830
T-1S6-11-X-2	(23,62) .930
T-1S6-12-X-2	(26,16) 1,030
T-1S6-13-X-2	(31,24) 1,230
T-1S6-14-X-2	(36,32) 1,430
T-1S6-15-X-2	(18,00) .630
T-1S6-16-X-2	(11,30) .445
T-1S6-17-X-2	(12,19) .480
T-1S6-18-X-2	(7,62) .300
T-1S6-19-X-2	(33,78) 1,330
T-1S6-20-X-2	(28,70) 1,130
T-1S6-21-X-2	(8,51) .335

Pins are supplied on a bandolier.

X = Plating option (specify G or T)
-G = 10µ" (0,25µm) Gold on .165" (4,19mm) contact area. Gold flash on balance
-T = 200µ" (5,08µm) Tin
Material: Phosphor Bronze

Due to technical progress, all designs, specifications and components are subject to change without notice.

WWW.SAMTEC.COM

SAMTEC USA • Tel: 1-800-SAMTEC-9 or 812-944-6733 • Fax: 812-948-5047

SAMTEC UK • Tel: 01236 739292 • Fax: 01236 727113

SAMTEC GERMANY • Tel: +49 (0) 89 / 89460-0 • Fax: +49 (0) 89 / 89460-299

SAMTEC FRANCE • Tel: 01 60 95 06 60 • Fax: 01 60 95 06 61

SAMTEC ITALY • Tel: 39 039 6890337 • Fax: 39 039 6890315

SAMTEC JAPAN • Tel: 81-424-42-8318 • Fax: 81-424-42-8319

SAMTEC ASIA PACIFIC • Tel: 65 6745-5955 • Fax: 65 6841-1502

SAMTEC CHINA • Tel: 86-21-5385-4089 • Fax: 86-21-5385-4047

SAMTEC HONG KONG • Tel: 852-26904858 • Fax: 852-26904842

SAMTEC TAIWAN • Tel: 886-02-2364-6077 • Fax: 886-02-2367-9531

SAMTEC ANZ • Tel: 613 9512 7747 • Fax: 613 9512 7745