

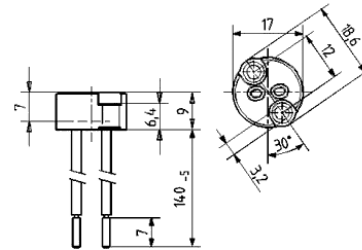


GY6.35

25.106.3501



◀ 1/1 ▶



◀ 1/1 ▶

T250

10 A

50 V

Part No.	Color	Package qty.	Wt.
25.106.3501.00	other	500	8

Connecting piece GX 5.3

Screw mount 12 mm centers

T-Marking: 250

Connection: Cable PTFE, rear cable entry

Housing: Housing ceramic

- Wires: Cu, nickel plated 1.0 mm<sup>2</sup>, with ferrule,

Insulation: PTFE (max. 250° C)

Rear cable entry

free cable length: 140 mm

- Housing: Ceramic

- Contacts: Ni

- The method of wiring must be such that no stress or bending motions will be transferred to the contacts, thus reducing the contact / pressure on the lamp pins.

- cURus: File E-93328