

25

P 136

Modular connectors

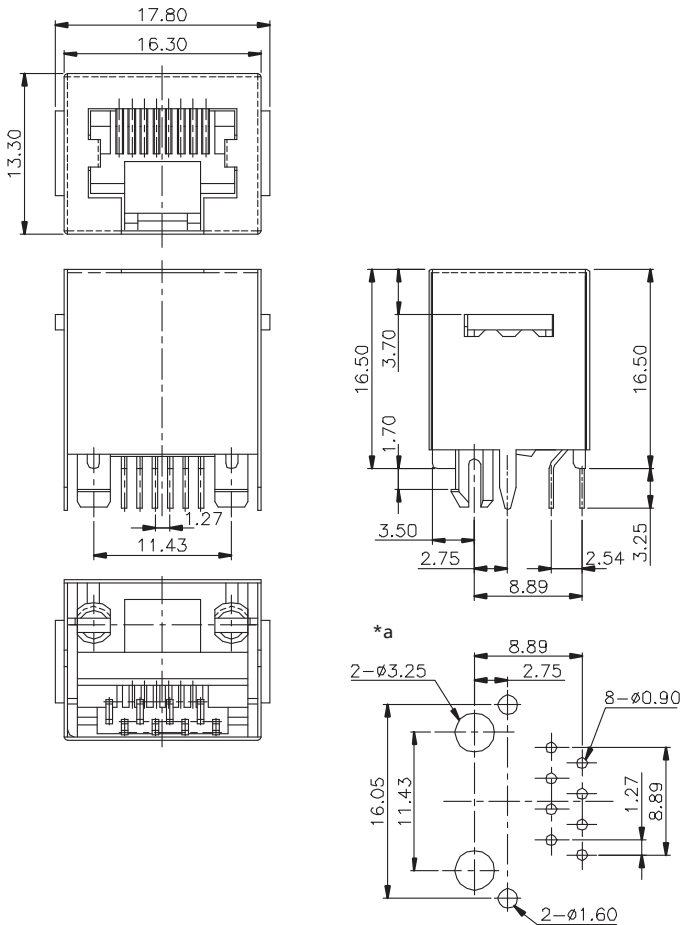


Modular chassis socket, 8p8c (RJ45), upright, with full shielding and flange, for printed circuit boards

State: Active

25

P 136



*a printed circuit board layout, components side view

Environmental conditions

Temperature range -40 °C/+70 °C

Materials

Insulating body PBT GF, V-0 according to UL94
 Contact spring CuSn, pre-nickel and gold-plated, tin-plated in solder area
 Housing CuZn, nickel-plated

Mechanical data

Mating cycles 1000
 Insertion force 12,3 N
 Withdrawal force 80,4 N

Electrical data (at T_{amb} 20 °C)

Contact resistance ≤ 40 mΩ
 Rated current 1,5 A
 Rated voltage 125 V
 Rated impulse voltage 500 V
 Insulation resistance ≥ 500 MΩ

Associated products

Counterparts
 ☞ P 129 ☞ P 129 S

Accessories
 ☞ 2533 01

25

P 136

Designation	Pole Number	PU (Pieces)	MDQ (Pieces)
P 136	8	38	450

Packaging:
in a tray