

16

1610 01

## Power supply connectors



Power supply chassis socket, straight version, with solder eyes, for snap-in front side mounting

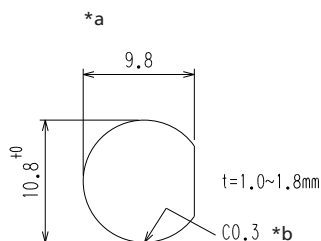
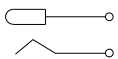
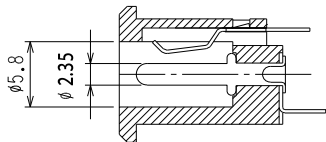
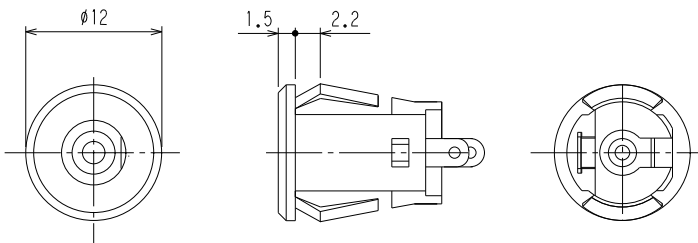
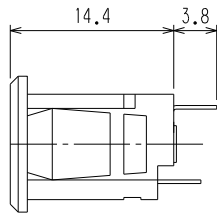
---

State: Active

---

16

1610 01



\*a port in mounting plate  
\*b for metal plate

#### Environmental conditions

Temperature range -20 °C/+70 °C

#### Materials

Insulating body PA GF, HB according to UL94  
Contact spring CuZn/CuSn, nickel-plated

#### Mechanical data

Diameter opening 5,8 mm  
Diameter center pin 2,35 mm  
Mating cycles  $\geq 3000$   
Insertion force 4–30 N<sup>1</sup>  
Withdrawal force 4–30 N<sup>1</sup>

<sup>1</sup> gemessen mit einem Lehrenstecker

#### Electrical data (at T<sub>amb</sub> 20 °C)

Contact resistance  $\leq 30 \text{ m}\Omega$   
Rated current 1 A  
Rated voltage 12 V DC  
Rated impulse voltage 500 V/60 s  
Insulation resistance  $\geq 100 \text{ M}\Omega$

#### Associated products

Counterparts  
 NES/J 25       NES/J 250       XNES/J 250

16

1610 01

Designation	Pole Number	PU (Pieces)	MDQ (Pieces)
1610 01	2	250	500

**Packaging:**

in bulk, in a cardboard box or a plastic bag