

User Manual

DA16200 Mass Production

UM-WI-011

Abstract

This User Manual is intended to help customers setup the hardware development environment, install the required software, and download and run an example application on the DA16200 Development Kit development platform.

Contents

Abstract	1
Contents	2
Figures	2
Tables	3
1 Terms and Definitions	3
2 References	3
3 Overview	4
3.1 Production Procedure	4
4 Firmware Download	5
4.1 Download via UART.....	5
4.2 Download via SPI.....	5
4.3 NVRAM Initialization	5
4.4 S/W Version Verification	6
4.5 Download the Manufacturer and General Images	7
5 XTAL Calibration	8
5.1 Frequency Calibration.....	8
6 RF Test	10
6.1 Test Parameter	10
6.2 Test Channel.....	10
6.3 Test Channel.....	10
7 Writing MAC Address	11
7.1 AT GUI Tool	11
7.2 Console Command // Check	12
8 Wi-Fi Function Test	13
9 Standby Current Measurement	13
10 Factory reset	14
10.1 Console Command	14
10.2 AT Command	14
11 Change Boot Index	14
11.1 Console Command	14
Revision History	16

Figures

Figure 1: Version Verification with Use of AT Command	7
Figure 2: Calibration Procedure	8
Figure 3: Certification Mode Screen in AT GUI tool	10
Figure 4: OTP Mode Screen in AT GUI Tool.....	11
Figure 5: Network Mode Screen in AT GUI tool	13

DA16200 Mass Production
Tables

Table 1: 2MB Serial Flash Memory Map	5
Table 2: 4MB Serial Flash Memory Map	5
Table 3: AT Command to Check Version	6
Table 4: XTAL Offset OTP Address	9
Table 5: RF Test Parameters	10
Table 6: AT Command for Writing/Reading MAC Address	12
Table 7: AT Command for Factory Reset.....	14

1 Terms and Definitions

GUI	Graphical User Interface
UART	Universal Asynchronous Receiver/Transmitter
SPI	Serial Peripheral Interface
RF	Radio Frequency
OTP	One Time Password

2 References

- [1] DA16200, Datasheet, Dialog Semiconductor
- [2] UM-B-109 DA16200 EVK User Manual, Dialog Semiconductor
- [3] UM-B-111 DA16200 AT command User Manual, Dialog Semiconductor
- [4] UM-B-112 DA16200 AT GUI Tool, Dialog Semiconductor
- [5] UM-B-128 DA16200 SPI SFlash Downloader User Manual, Dialog Semiconductor
- [6] UM-B-127 DA16200 UART SFlash Downloader User Manual, Dialog Semiconductor

DA16200 Mass Production

3 Overview

This document explains the production procedure for DA16200 and what options and limitations the customer needs to consider in the production process. Each procedure or the order introduced here can be omitted or changed according to customer's production environment.

The following serial interfaces are used in the production process:

- UART0: Debug console and firmware download
- UART1: AT command
- SPI: Firmware download with high speed

DA16200 provides firmware download tools that use UART0 or SPI, and the AT GUI tool that uses AT commands for RF test, Wi-Fi function test, OTP writing and so forth. It is possible to use these tools in the production process, or look at the sample application source codes to make a customer's production application.

3.1 Production Procedure

Production will be done in the following sequence:

- Firmware download
- XTAL calibration
- RF test
- Writing MAC address
- Wi-Fi function test
- Standby current measurement
- Factory reset
- Store certificate

DA16200 Mass Production

4 Firmware Download

The first procedure is to write the initial images in an empty serial flash IC. DA16200 supports UART and SPI to download firmware and provides a GUI tool and sample source codes.

The download of firmware is done with an MROM prompt (boot mode).

See [Table 1](#) and [Table 2](#) for the download addresses of each firmware image.

Table 1: 2MB Serial Flash Memory Map

Address	Item	Size
0x0000_0000	2nd Bootloader	36 kB
0x0000_9000	Boot Index	4 kB
0x0000_A000	RTOS #0	924 kB
0x000F_1000	SLIB #0 (RamLib + TIM)	52 kB
0x000F_E000	RTOS #1	924 kB
0x001E_5000	SLIB #1 (RamLib + TIM)	52 kB

Table 2: 4MB Serial Flash Memory Map

Address	Item	Size
0x0000_0000	2nd Bootloader	36 kB
0x0000_9000	Boot Index	4 kB
0x0000_A000	RTOS #0	1536 kB
0x0018_A000	SLIB #0 (RamLib + TIM)	64 kB
0x0020_0000	RTOS #1	1536 kB
0x0038_0000	SLIB #1 (RamLib + TIM)	64 kB

4.1 Download via UART

There are three images (BOOT, SLIB and RTOS) to be downloaded via UART0 with the `ymodem` protocol. See section **Firmware Update** in the DA16200 EVK User Manual [\[2\]](#) about firmware download commands.

Dialog Semiconductor provides a GUI to use a download tool. For details, see UM-B-127 DA16200 UART SFlash Downloader User Manual [\[6\]](#).

4.2 Download via SPI

SPI can reduce the firmware download time because the SPI interface has a higher speed. For details, see the UM-B-128 DA16200 SPI SFlash Downloader User Manual [\[5\]](#).

4.3 NVRAM Initialization

Normally, the flash memory is empty before downloading firmware, so the NVRAM region should be initialized. You can select one of following methods to initialize the NVRAM region.

DA16200 Mass Production

The console command in DA16200 prompt and the NVRAM region can be initialized with the following commands after the first firmware download.

```
[/DA16200] # nvram
[/DA16200/NVRAM] nvedit erase sflash
[/DA16200/NVRAM] nvedit clear
[/DA16200/NVRAM] nvcfg update sflash
update, sflash completed
[/DA16200/NVRAM] nvedit load sflash
nvedit, load completed
```

4.4 S/W Version Verification

Run the following console command or AT command to find out what the written firmware’s versions are.

- Console command `ver`

```
[/DA16200] # ver
*****
*           DA16200 SDK Information
* -----
*
* - CPU Type: Cortex-M4 (80 MHz)
* - OS Type: ThreadX 5.7
* - Serial Flash: 16 Mbits (2 MBytes)
* - SDK Type: Generic v1.0.0
* - F/W Version: RTOS-GEN01-01-7140-000000
*           : SLIB-GEN01-01-7089-000000
* - F/W Build Time: Jul  5 2019 17:35:59
* - Boot Index: 0
*
*****
[/DA16200] #
```

- AT command

Table 3: AT Command to Check Version

Command	Parameters	Description
AT+VER	(none)	Get version info. Response: +VER:<RTOS version>,<SLIB version>

DA16200 Mass Production

```
AT+VER
+VER:RTOS-GEN01-01-7140-000000,SLIB-GEN01-01-7089-000000
OK
```

Figure 1: Version Verification with Use of AT Command

4.5 Download the Manufacturer and General Images

A manufacturer's image set may be needed for calibration and an RF test during the production process. There is an effective procedure to download the General Image set and the Test Image set in one step to reduce production time.

DA16200 provides two image regions (see [Table 1](#) and [Table 2](#) for each region: #0 and #1) for an OTA update. It is possible to use these regions for each image set and change the index of the boot image set. The default value of the boot index points to #0, so it will work as a manufacturer's image on first boot.

1. Go to MROM prompt and download the secondary bootloader.
2. Download the manufacturer's image to the RTOS # 0 and SLIB # 0 region.
3. Download the general image to the RTOS # 1 and SLIB # 1 regions.
4. Boot - The default boot index is #0.
5. Initialize the NVRAM.
6. Execute the test process.
7. Execute the remainder of the procedure.

5 XTAL Calibration

DA16200 has several OTP slots for TX power, temperature and XTAL frequency calibration. The AT GUI tool provides menus for each calibration. This chapter explains only about XTAL frequency calibration. TX power and temperature frequency calibration has been done during the ATE test.

5.1 Frequency Calibration

This chapter describes how to do the frequency calibration.

Figure 22 gives an example flowchart of the procedure.

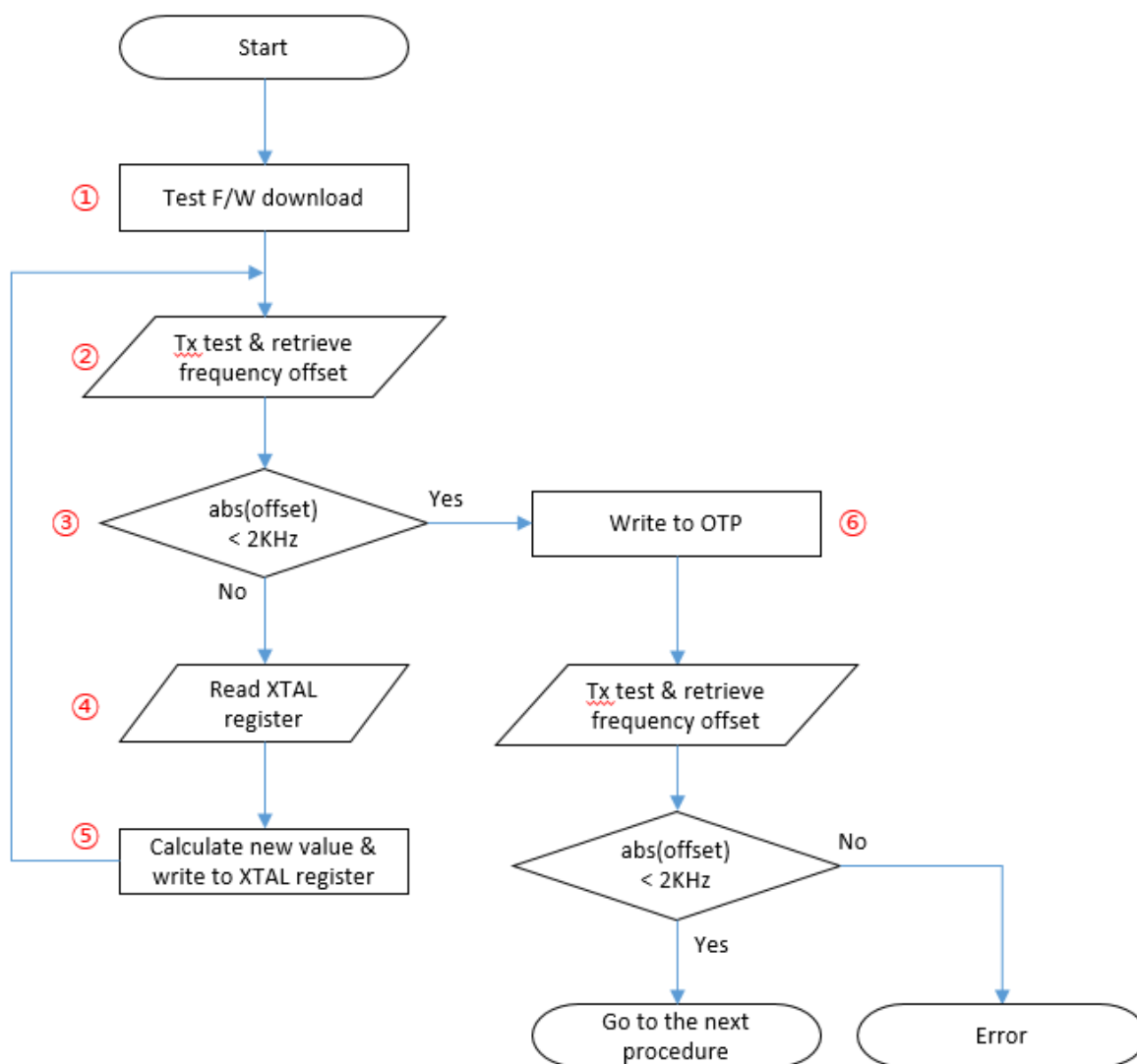


Figure 2: Calibration Procedure

1. Download the test firmware. This firmware can be the final image.
2. On the DA16200, run the TX test mode and read the frequency offset with the use of measuring equipment.
3. If the offset is below 2 kHz, then the value is within the margin. If not, then do the steps 4 and 5 to change the XTAL register value.

DA16200 Mass Production

4. Read the XTAL register value with command `AT+XTALRD`. The example shows the AT command to read the current value of the XTAL register. The result is 0x29 in this example.

```
AT+XTALRD
0x29
```

5. Calculate a new value for the XTAL register and write the XTAL register. The example code shows how to calculate a new XTAL value.

```
if (abs(offset) < 2000) {
    // Go to write OTP
} else {
    newXtalValue = currentXtalValue - (offset / 4000);
    if (offset % 4000 > 0) newXtalValue--;
    else if (offset % 4000 < 0) newXtalValue++;
    // Go to write the XTAL register
}
```

6. Use the AT command `AT+XTALWR=<newValue>` to write a new value for the XTAL register.

```
AT+XTALWR=<newValue>
OK
```

7. Write the final value with command `AT+UOTPWRASC=0428,1,<newValue>` to OTP and go to the next step to confirm if the result is good.

```
AT+UOTPWRASC=0428,1,<newValue>
OK
```

8. DA16200 has two slots to store the XTAL offset in the OTP memory. See [Table 44](#). To use AT command to write value at OTP address, address x 4 should be taken because address is 4-byte aligned address. For more details, see section **OTP Commands** in DA16200 AT Command User Manual [\[3\]](#)

Table 4: XTAL Offset OTP Address

Slot	OTP Address	Address for AT command	Size (Bytes)
XTAL Offset #0	0x10A	428	2
XTAL Offset #1	0x10B	42c	2

DA16200 Mass Production

6 RF Test

You can test TX/RX performance of DA16200 in the Certification Mode menu of the AT GUI tool. See [Figure 33](#). For more information about AT commands, see section **RF Test Function Commands** in the UM-B-112 DA16200 AT GUI Tool User Manual [\[4\]](#).

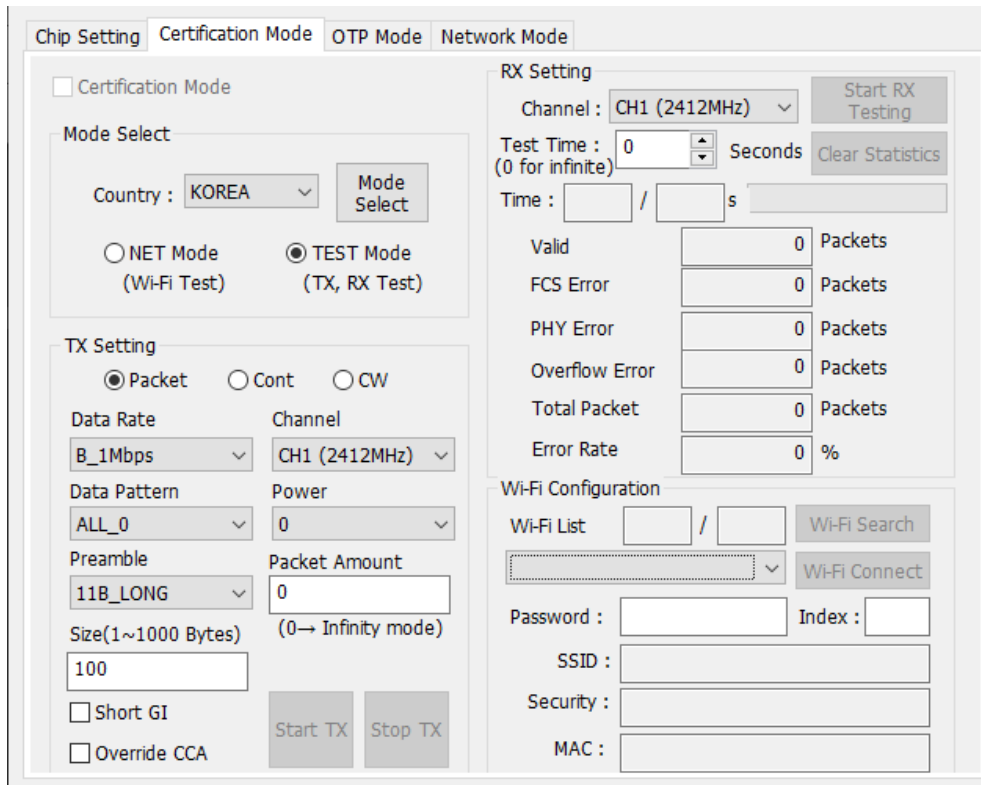


Figure 3: Certification Mode Screen in AT GUI tool

6.1 Test Parameter

Basic RF test parameters are listed in [Table 5](#).

6.2 Test Channel

DA16200 supports up to CH14, but it is highly recommended to check what the performance is at CH1 (2,412 MHz), CH7 (2,442 MHz) and CH13 (2,472 MHz).

6.3 Test Channel

To confirm the best performance of the product, the recommendation is to check the test parameter of the Receiver and Transmitter mentioned in [Table 55](#).

Table 5: RF Test Parameters

Test Parameter	802.11 B	802.11 G	802.11 N (HT20)
Tx	EVM	EVM	EVM
	Frequency Tolerance	Frequency Tolerance	Frequency Tolerance
	Output Power	Output Power	Output Power

DA16200 Mass Production

Test Parameter	802.11 B	802.11 G	802.11 N (HT20)
	Data rate	Data rate	Data rate
	Symbol Clock Tolerance	Symbol Clock Tolerance	Symbol Clock Tolerance
	Tx Carrier Leakage	Tx Carrier Leakage	Tx Carrier Leakage
	Spectrum Emission Mask	Spectrum Emission Mask	Spectrum Emission Mask
Rx	Sensitivity	Sensitivity	Sensitivity

7 Writing MAC Address

The MAC address written in the OTP memory is used for the WLAN0 interface (Station) MAC address and the next number is automatically designated as the WLAN1 (Soft-AP) MAC address. For example, if AA:BB:11:22:33:44 is written in the OTP memory, then WLAN0 has AA:BB:11:22:33:44 and WLAN1 has AA:BB:11:22:33:45.

As each DA16200 chip consumes two MAC addresses, when you write a mac address to a DA16200 chip, the last byte of the mac address should be bigger 'by 2' than that of the previous DA16200 chip in the production line. For example, AA:BB:11:22:33:44, AA:BB:11:22:33:46, AA:BB:11:22:33:48 and so on. The last digit of the WLAN0 MAC address should be an even number.

7.1 AT GUI Tool

You can write MAC addresses in OTP Mode menu in the AT GUI tool. DA16200 provides 4 slots to store MAC addresses in the OTP memory. When a new MAC address is written, the previous slot should be invalidated. See DA16200 AT GUI Tool User Manual [4].

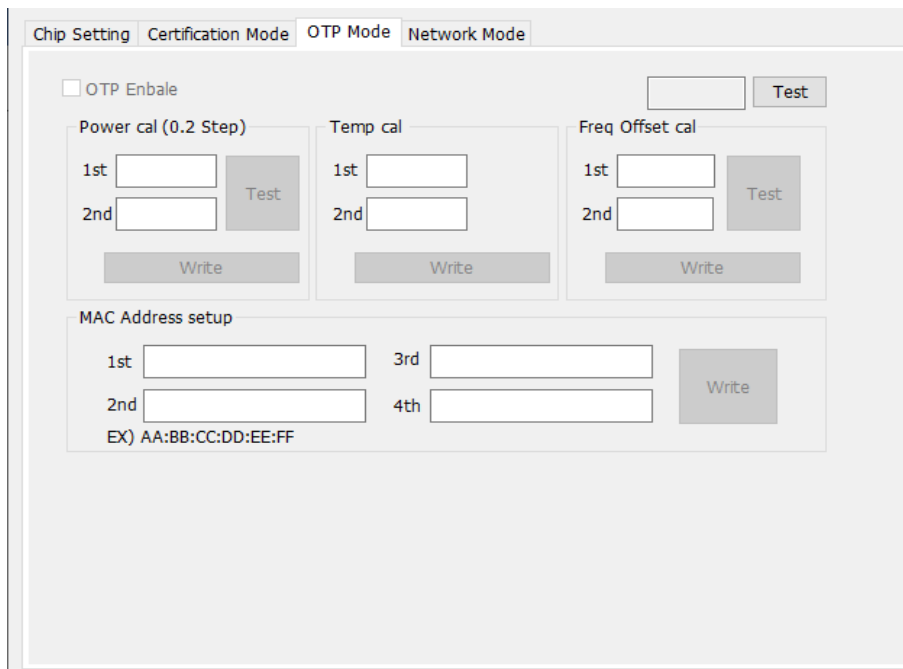


Figure 4: OTP Mode Screen in AT GUI Tool

DA16200 Mass Production

Table 6: AT Command for Writing/Reading MAC Address

Command	Parameters	Description
AT+WFOTP	<mac>	<p>Write MAC address in the OTP memory. An old MAC address in the OTP will be invalidated if one exists. There are four mac address slots available in OTP, so only a maximum of four MAC addresses are written in total at production.</p> <p>Response: OK or ERROR</p> <p>For example: AT+WFOTP=EC:9F:0D:90:00:48</p> <p>The last hex of <mac> should be an even number.</p> <p>The MAC address written in the OTP is used as WLAN0 MAC address and then WLAN's MAC+1 will be used as WLAN1 MAC address.</p>
AT+WFMAC	(none)	<p>Get the current MAC address of the activated WLAN interface.</p> <p>DA16200 provides three types of MAC addresses (OTP MAC address, user MAC address and spoofing MAC address). The priority is OTP < User < Spoofing.</p> <p>Response: +WFMAC:<mac></p>

7.2 Console Command // Check

1. Use command `setotpmac` as shown in the example code, to write the new MAC address to an empty slot. This command invalidates the previous slot and validates the new slot.

```
[/DA16200] # setotpmac AA:BB:11:22:33:44
```

2. Use command `getwlanmac` to check what the new MAC address is.

```
[/DA16200] # getwlanmac
MAC TYPE: OTP MAC
WLAN0 - AA:BB:11:22:33:44
WLAN1 - AA:BB:11:22:33:45
```

DA16200 Mass Production

8 Wi-Fi Function Test

To test the basic Wi-Fi function (station and soft-AP), use the Network Mode menu in the AT GUI tool. See DA16200 AT GUI Tool User Manual [4]. And for related commands, see section **Network Function Commands** in DA16200 AT Command User Manual [3].

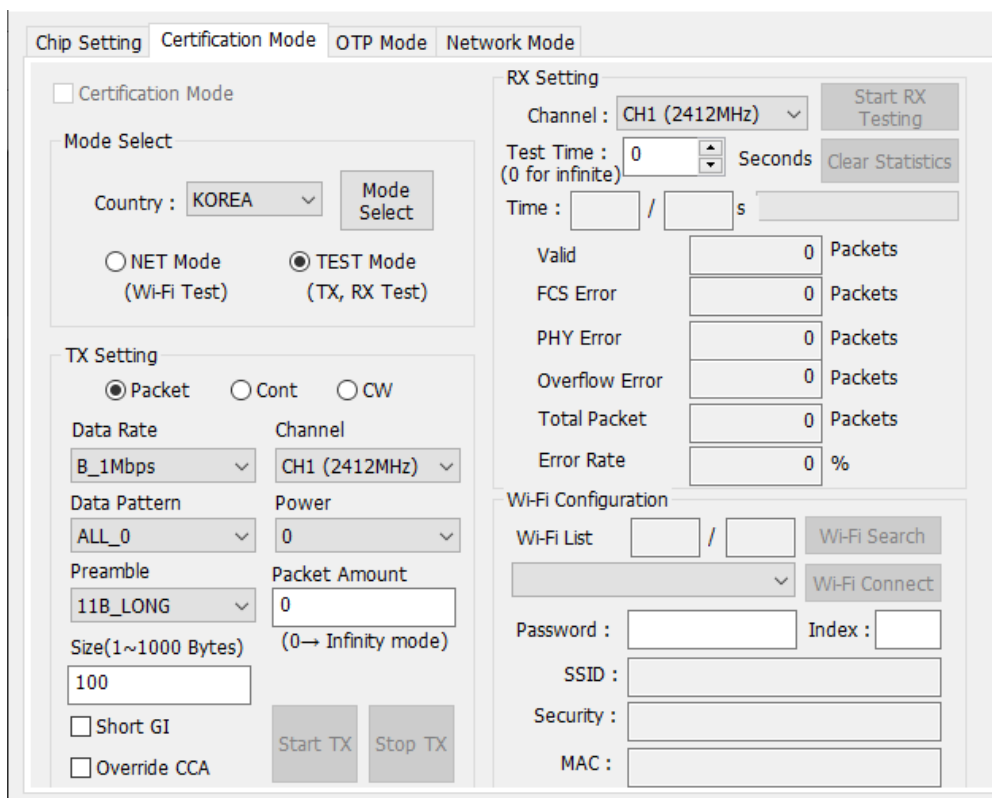


Figure 5: Network Mode Screen in AT GUI tool

9 Standby Current Measurement

You may need to measure the standby current consumption to detect any current leakage in the DA16200. The following example code makes DA16200 go to sleep mode.

```

[/DA16200] # sys.hal
[/DA16200/SYS] # sleep [mode] [time]
Mode: sleep mode
2: Sleep mode 2.
3: Sleep mode 3.
Time: DA16200 wakes up after this time passes (second)
    
```

See section **Test Methods** in UM-B-109 DA16200 EVK User Manual [2] about measuring current consumption.

DA16200 Mass Production

10 Factory reset

Many profiles may be written in the NVRAM during the production process so DA16200 may need to be initialized to the factory status. The command code example in 10.1 or the use of the AT command in Table 77 erases all user NVRAM items.

10.1 Console Command

```
[/DA16200] # factory
FACTORY RESET [N/y/?] y

Start Factory-Reset ...

Rebooting....
```

10.2 AT Command

Table 7: AT Command for Factory Reset

Command	Parameters	Description
ATF	(none)	DA16200 factory reset.

11 Change Boot Index

To change from the manufacturer's image to the General Image, change the boot index and then reboot. See the example code in 11.1. After the reboot is completed, check if the version printed at boot and the boot index values have changed. See section 4.4.

11.1 Console Command

```
[/DA16200] # boot_idx 1
[/DA16200] # reboot

>>> Network Interface (wlan0): DOWN
[wpasupplicant_event_disassoc] CTRL-EVENT-DISCONNECTED bssid=aa:ab:ac:ad:ae:af
reason=3 locally_generated=1
[wpasupplicant_ev_disassoc_fin] Disconnect event - remove keys
RaLIB is relocated to RETMEM (20f815c0, 564, 12904718, 12904718)
P.TIM is relocated to RETMEM (20f835c0, 3)
dpm_init_retmemory::316 DPM INIT CONFIGURATION(1)

WakeUp source is 0x0

*****
*
*          DA16200 SDK Information
* -----
*
* - CPU Type: Cortex-M4 (80 MHz)
* - OS Type: ThreadX 5.7
* - Serial Flash: 16 Mbits (2 MBytes)
```

DA16200 Mass Production

```
* - SDK Type: Generic v1.0.0
* - F/W Version: RTOS-GEN01-01-7140-000000
*           : SLIB-GEN01-01-7089-000000
* - F/W Build Time: Jul  5 2019 17:35:59
* - Boot Index: 1
*
*****
```

Revision History

Revision	Date	Description
1.3	21-Nov-2019	Finalized for publication
1.2	18-Nov-2019	Editorial review Add description for OTP write command at page 9
1.1	12-Nov-2019	Add 2.5 Download the Manufacture and General Images Add Section 9 Change Boot Index Error correction on Table 4
1.0	31-Jul-2019	Preliminary DRAFT Release

DA16200 Mass Production

Status Definitions

Status	Definition
DRAFT	The content of this document is under review and subject to formal approval, which may result in modifications or additions.
APPROVED or unmarked	The content of this document has been approved for publication.

Disclaimer

Unless otherwise agreed in writing, the Dialog Semiconductor products (and any associated software) referred to in this document are not designed, authorized or warranted to be suitable for use in life support, life-critical or safety-critical systems or equipment, nor in applications where failure or malfunction of a Dialog Semiconductor product (or associated software) can reasonably be expected to result in personal injury, death or severe property or environmental damage. Dialog Semiconductor and its suppliers accept no liability for inclusion and/or use of Dialog Semiconductor products (and any associated software) in such equipment or applications and therefore such inclusion and/or use is at the customer's own risk.

Information in this document is believed to be accurate and reliable. However, Dialog Semiconductor does not give any representations or warranties, express or implied, as to the accuracy or completeness of such information. Dialog Semiconductor furthermore takes no responsibility whatsoever for the content in this document if provided by any information source outside of Dialog Semiconductor.

Dialog Semiconductor reserves the right to change without notice the information published in this document, including, without limitation, the specification and the design of the related semiconductor products, software and applications. Notwithstanding the foregoing, for any automotive grade version of the device, Dialog Semiconductor reserves the right to change the information published in this document, including, without limitation, the specification and the design of the related semiconductor products, software and applications, in accordance with its standard automotive change notification process.

Applications, software, and semiconductor products described in this document are for illustrative purposes only. Dialog Semiconductor makes no representation or warranty that such applications, software and semiconductor products will be suitable for the specified use without further testing or modification. Unless otherwise agreed in writing, such testing or modification is the sole responsibility of the customer and Dialog Semiconductor excludes all liability in this respect.

Nothing in this document may be construed as a license for customer to use the Dialog Semiconductor products, software and applications referred to in this document. Such license must be separately sought by customer with Dialog Semiconductor.

All use of Dialog Semiconductor products, software and applications referred to in this document is subject to Dialog Semiconductor's [Standard Terms and Conditions of Sale](#), available on the company website (www.dialog-semiconductor.com) unless otherwise stated.

Dialog, Dialog Semiconductor and the Dialog logo are trademarks of Dialog Semiconductor Plc or its subsidiaries. All other product or service names and marks are the property of their respective owners.

© 2020 Dialog Semiconductor. All rights reserved.

Contacting Dialog Semiconductor

United Kingdom (Headquarters)
Dialog Semiconductor (UK) LTD
Phone: +44 1793 757700

Germany
Dialog Semiconductor GmbH
Phone: +49 7021 805-0

The Netherlands
Dialog Semiconductor B.V.
Phone: +31 73 640 8822

Email:
enquiry@diasemi.com

North America
Dialog Semiconductor Inc.
Phone: +1 408 845 8500

Japan
Dialog Semiconductor K. K.
Phone: +81 3 5769 5100

Taiwan
Dialog Semiconductor Taiwan
Phone: +886 281 786 222

Web site:
www.dialog-semiconductor.com

Hong Kong
Dialog Semiconductor Hong Kong
Phone: +852 2607 4271

Korea
Dialog Semiconductor Korea
Phone: +82 2 3469 8200

China (Shenzhen)
Dialog Semiconductor China
Phone: +86 755 2981 3669

China (Shanghai)
Dialog Semiconductor China
Phone: +86 21 5424 9058