

IEC Appliance Connector C14 with Fuseholder 1- or 2-pole



Pick & Place Version

C14



70° C

**Description**

- Panel Mount: Sandwich/rear-side
- 2 Functions: Inlet Protection class I, with or without Fuseholder for fuse-links 5 x 20 mm on the rear-side 1- or 2-pole
- For PCB mounting
- Pick and place version

Characteristics

- PCB mount with snap-in or screw-on feet
- Suitable for automatic PCB assembling
- All single elements are already wired
- Fuseholder on the inside of the equipment prevents accidental use of incorrect fuse-links by the user
- With or without rear-side insulation cover
- Blister tray meets ESD requirements
- Qualified for use in equipment according IEC/EN 60950

Other versions on request

- Ground terminal with quick-connect terminal 6,3 x 0,8 mm
- For protection class II

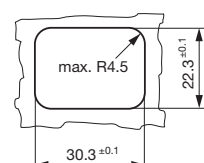
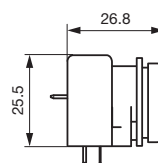
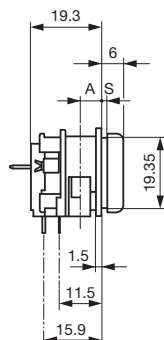
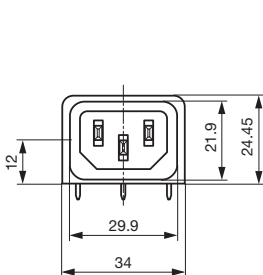
WeblinksApprovals: <http://www.schurter.com/approvals>RoHS: <http://www.schurter.com/rohs>**Technical Data**

Ratings IEC	10 A / 250 VAC; 50 Hz
Ratings UL/CSA	10 A / 250 VAC; 60 Hz
Dielectric Strength	> 3 kVAC between L-N > 4 kVAC between L/N-PE (1 min/50 Hz)
Allowable Operation Temp.	-25 °C to 70 °C
Degree of Protection	from front side IP 40 acc. to IEC 60529
Protection Class	Suitable for appliances with protection class I acc. to IEC 61140
Terminal	For PCB mounting
Panel Thickness s	Snap-in: 1.5/2/2.5/3 mm
Material: Housing	Thermoplastic, black, UL 94V-0

Appliance-Inlet /-Outlet	C14 acc. to IEC/EN 60320-1, UL 498, CSA C22.2 no. 42 (for cold condition) pin-temperature 70 °C, 10 A, Protection class I
Fuseholder	optional, 1 or 2 pole, Shocksafe category PC2 acc. to IEC 60127-6, for fuse-links 5 x 20 mm
Rated Power Acceptance @ Ta 23 °C	5 x 20: 3.15 W (1 pole)/ 2.5 W (2-pole) per pole
Power Acceptance @ Ta > 23°C	Admissible power acceptance at higher ambient temperature see derating curves

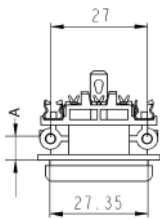
Dimensions

Length 34 mm
 rear-side mounting: without groove with insulation cover

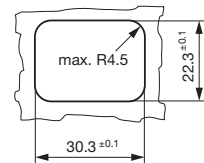


A = 6 mm for standard versions
 A = 5 mm for pick and place versions

for mounting from rear-side



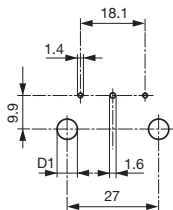
A = 6 mm for standard versions
 A = 5 mm for pick and place versions



for sandwich mounting

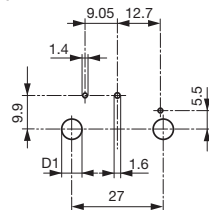
Drilling diagrams

without fuseholder



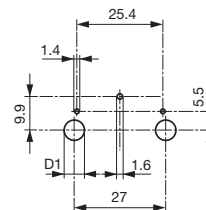
d1 for snap-in mounting = 6 ± 0.05
 d1 for self-tapping screw = 3.6 ± 0.1

with 1-pole fuseholder



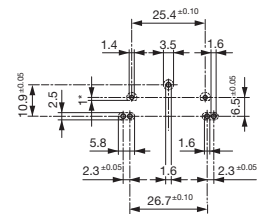
d1 for snap-in mounting = 6 ± 0.05
 d1 for self-tapping screw = 3.6 ± 0.1

with 2-pole fuseholder



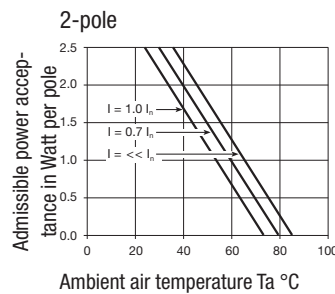
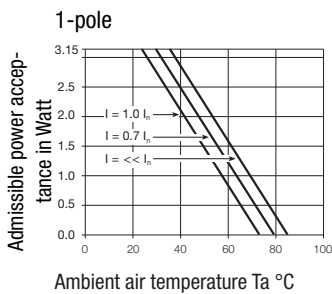
d1 for snap-in mounting = 6 ± 0.05
 d1 for self-tapping screw = 3.6 ± 0.1

Pick and Place versions
 without / with 1-pole or
 2-pole fuseholder



1* only for protection class II

Derating curves



Variants

Mounting side	Panel mounting	Panel Thickness s [mm]	Fuseholder	Ground terminal 4.8 x 0.8 mm	Ground terminal direction	Packaging	Order Number
-	-	-	optional, 1 or 2		-	-	GSF1.0104.01
-	-	-	optional, 1 or 2		-	-	GSF1.0123.01
-	-	-	optional, 1 or 2		-	-	GSF1.0206.01
-	-	-	optional, 1 or 2		-	-	GSF1.0222.31
-	-	-	optional, 1 or 2		-	-	GSF1.1004.01
-	-	-	optional, 1 or 2		-	-	GSF1.1006.01
-	-	-	optional, 1 or 2		-	-	GSF1.1102.31
-	-	-	optional, 1 or 2		-	-	GSF1.1200.31
-	-	-	optional, 1 or 2		-	-	GSF1.1200.41
-	-	-	optional, 1 or 2		-	-	GSF1.2002.71
-	-	-	optional, 1 or 2		-	-	GSF1.2200.01
-	-	-	optional, 1 or 2		-	-	GSF1.2200.51
-	-	-	optional, 1 or 2		-	-	GSF1.2204.41
-	-	-	optional, 1 or 2		-	-	GSF1.2204.51
-	-	-	optional, 1 or 2		-	-	GSF1.2207.01
-	-	-	optional, 1 or 2		-	-	GSF1.2212.01
-	-	-	optional, 1 or 2		-	-	GSF1.2212.41

Mounting side	Panel mounting	Panel Thickness s [mm]	Fuseholder	Ground terminal 4.8 x 0.8 mm	Ground terminal direction	Packaging	Order Number
-	-	-	optional, 1 or 2		straight	-	GSF1.0221.01
-	-	-	optional, 1 or 2		straight	-	GSF1.0221.31
-	-	-	optional, 1 or 2		straight	-	GSF1.2211.31
-	Snap-in	3	-	●	angled to pin axis	-	GSF1.0202.62
-	Snap-in	2.5	1 pole	●	angled to pin axis	-	GSF1.1202.52
-	Snap-in	3	2-pole	●	angled to pin axis	-	GSF1.2202.62
Sandwich	Snap-in	1.5	-	●	angled to pin axis	-	GSF1.0202.31
Sandwich	Snap-in	1.5	-	●	straight	-	GSF1.0201.31
Sandwich	Snap-in	2	-	●	angled to pin axis	-	GSF1.0202.41
Sandwich	Snap-in	2	-	●	straight	-	GSF1.0201.41
Sandwich	Snap-in	2.5	-	●	angled to pin axis	-	GSF1.0202.51
Sandwich	Snap-in	2.5	-	●	straight	-	GSF1.0201.51
Sandwich	Snap-in	3	-	●	angled to pin axis	-	GSF1.0202.61
Sandwich	Snap-in	3	-	●	straight	-	GSF1.0201.61
Sandwich	Snap-in	1.5	1 pole	●	angled to pin axis	-	GSF1.1202.31
Sandwich	Snap-in	1.5	1 pole	●	straight	-	GSF1.1201.31
Sandwich	Snap-in	2	1 pole	●	angled to pin axis	-	GSF1.1202.41
Sandwich	Snap-in	2	1 pole	●	straight	-	GSF1.1201.41
Sandwich	Snap-in	2.5	1 pole	●	angled to pin axis	-	GSF1.1202.51
Sandwich	Snap-in	2.5	1 pole	●	straight	-	GSF1.1201.51
Sandwich	Snap-in	3	1 pole	●	angled to pin axis	-	GSF1.1202.61
Sandwich	Snap-in	3	1 pole	●	straight	-	GSF1.1201.61
Sandwich	Snap-in	1.5	2-pole	●	angled to pin axis	-	GSF1.2202.31
Sandwich	Snap-in	1.5	2-pole	●	straight	-	GSF1.2201.31
Sandwich	Snap-in	2	2-pole	●	angled to pin axis	-	GSF1.2202.41
Sandwich	Snap-in	2	2-pole	●	straight	-	GSF1.2201.41
Sandwich	Snap-in	2.5	2-pole	●	angled to pin axis	-	GSF1.2202.51
Sandwich	Snap-in	2.5	2-pole	●	straight	-	GSF1.2201.51
Sandwich	Snap-in	3	2-pole	●	angled to pin axis	-	GSF1.2202.61
Sandwich	Snap-in	3	2-pole	●	straight	-	GSF1.2201.61
Sandwich	Screw-on	1.5	-	●	angled to pin axis	-	GSF1.0002.31
Sandwich	Screw-on	1.5	-	●	straight	-	GSF1.0001.31
Sandwich	Screw-on	2	-	●	angled to pin axis	-	GSF1.0002.41
Sandwich	Screw-on	2	-	●	straight	-	GSF1.0001.41
Sandwich	Screw-on	2.5	-	●	angled to pin axis	-	GSF1.0002.51
Sandwich	Screw-on	2.5	-	●	straight	-	GSF1.0001.51
Sandwich	Screw-on	3	-	●	angled to pin axis	-	GSF1.0002.61
Sandwich	Screw-on	3	-	●	straight	-	GSF1.0001.61
Sandwich	Screw-on	1.5	1 pole	●	angled to pin axis	-	GSF1.1002.31
Sandwich	Screw-on	1.5	1 pole	●	straight	-	GSF1.1001.31
Sandwich	Screw-on	2	1 pole	●	angled to pin axis	-	GSF1.1002.41
Sandwich	Screw-on	2	1 pole	●	straight	-	GSF1.1001.41
Sandwich	Screw-on	2.5	1 pole	●	angled to pin axis	-	GSF1.1002.51
Sandwich	Screw-on	2.5	1 pole	●	straight	-	GSF1.1001.51
Sandwich	Screw-on	3	1 pole	●	angled to pin axis	-	GSF1.1002.61
Sandwich	Screw-on	3	1 pole	●	straight	-	GSF1.1001.61
Sandwich	Screw-on	1.5	2-pole	●	angled to pin axis	-	GSF1.2002.31
Sandwich	Screw-on	1.5	2-pole	●	straight	-	GSF1.2001.31
Sandwich	Screw-on	2	2-pole	●	angled to pin axis	-	GSF1.2002.41
Sandwich	Screw-on	2	2-pole	●	straight	-	GSF1.2001.41
Sandwich	Screw-on	2.5	2-pole	●	angled to pin axis	-	GSF1.2002.51
Sandwich	Screw-on	2.5	2-pole	●	straight	-	GSF1.2001.51
Sandwich	Screw-on	3	2-pole	●	angled to pin axis	-	GSF1.2002.61
Sandwich	Screw-on	3	2-pole	●	straight	-	GSF1.2001.61
Rear-Side	Metal snaps	6	-	●	angled to pin axis	Blister tray	GSF1.3402.01
Rear-Side	Metal snaps	6	1 pole	●	angled to pin axis	Blister tray	GSF1.4402.01

Mounting side	Panel mounting	Panel Thickness s [mm]	Fuseholder	Ground terminal 4.8 x 0.8 mm	Ground terminal direction	Packaging	Order Number
Rear-Side	Metal snaps	6	2-pole	●	angled to pin axis	Blister tray	GSF1.5402.01
Rear-Side	Snap-in	6	-	●	angled to pin axis	-	GSF1.0202.01
Rear-Side	Snap-in	6	-	●	straight	-	GSF1.0201.01
Rear-Side	Snap-in	6	1 pole	●	angled to pin axis	-	GSF1.1202.01
Rear-Side	Snap-in	6	1 pole	●	straight	-	GSF1.1201.01
Rear-Side	Snap-in	6	2-pole	●	angled to pin axis	-	GSF1.2202.01
Rear-Side	Snap-in	6	2-pole	●	straight	-	GSF1.2201.01
Rear-Side	Screw-on	6	-	●	angled to pin axis	-	GSF1.0002.01
Rear-Side	Screw-on	6	-	●	straight	-	GSF1.0001.01
Rear-Side	Screw-on	6	1 pole	●	angled to pin axis	-	GSF1.1002.01
Rear-Side	Screw-on	6	1 pole	●	straight	-	GSF1.1001.01
Rear-Side	Screw-on	6	2-pole	●	angled to pin axis	-	GSF1.2002.01
Rear-Side	Screw-on	6	2-pole	●	straight	-	GSF1.2001.01

Insulation cover must be ordered separately. Order No. 0098.0078

Packaging unit 50 Pcs

Accessory

Description



Assorted Covers