

## Data sheet | Item number: 210-112

Steel carrier rail; 35 x 7.5 mm; 1 mm thick; 2 m long; slotted; according to EN 60715; "Hole width 25 mm

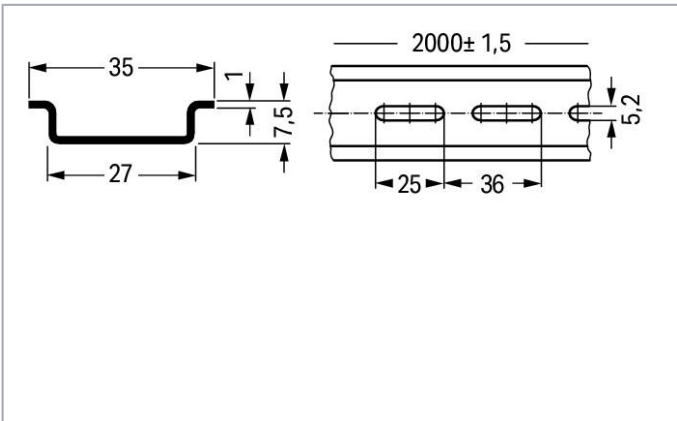


[www.wago.com/210-112](http://www.wago.com/210-112)



**i** Picture differs from the item.

RoHS  Compliant [BOMcheck.net](https://www.bomcheck.net)



### Data

#### Technical Data

Main product function

Mounting Accessories

Subject to changes. Please also observe the further product documentation!

WAGO Kontakttechnik GmbH & Co. KG  
Hansastr. 27  
32423 Minden  
Phone: +49571 887-0 | Fax: +49571 887-169  
Email: [info.de@wago.com](mailto:info.de@wago.com) | Web: [www.wago.com](http://www.wago.com)

Do you have any questions about our products?  
We are always happy to take your call at {0}.

## Geometrical Data

Width	2000 mm / 78.74 inch
Height	7.5 mm / 0.295 inch
Depth	35 mm / 1.378 inch

## Material Data

Weight	630 g
--------	-------

## Commercial data

Product Group	2 (Terminal Block Accessories)
Packaging type	BOX
Country of origin	IT
GTIN	4017332272292
Customs tariff number	72169180000

## Counterpart

## Compatible products

### assembling



**Item no.: 209-137**  
Mounting adapter; can be used as end stop; 6.5 mm wide; gray

[www.wago.com/209-137](http://www.wago.com/209-137)



**Item no.: 210-148**  
Angled support bracket; without screw

[www.wago.com/210-148](http://www.wago.com/210-148)



**Item no.: 210-149**  
Screw M 5 x 8; for angled support bracket

[www.wago.com/210-149](http://www.wago.com/210-149)



**Item no.: 249-116**  
Screwless end stop; 6 mm wide; for DIN-rail 35 x 15 and 35 x 7.5; gray

[www.wago.com/249-116](http://www.wago.com/249-116)



**Item no.: 249-117**  
Screwless end stop; 10 mm wide; for DIN-rail 35 x 15 and 35 x 7.5; gray

[www.wago.com/249-117](http://www.wago.com/249-117)



**Item no.: 249-197**  
Screwless end stop; 14 mm wide; for DIN-rail 35 x 15 and 35 x 7.5; gray

[www.wago.com/249-197](http://www.wago.com/249-197)

### General accessories



**Item no.: 209-109**  
Edge guards; for DIN 35 rail (7.5 mm high); gray

[www.wago.com/209-109](http://www.wago.com/209-109)

Subject to changes. Please also observe the further product documentation!

---

### Marking accessories

---



Item no.: 210-708

Labels; for TP printers; 9.5 x 25 mm; white

[www.wago.com/210-708](http://www.wago.com/210-708)



Item no.: 210-808

Labels; for Smart Printer; 9.5 x 25 mm; white

[www.wago.com/210-808](http://www.wago.com/210-808)

---

### Downloads

#### Documentation

##### Bid Text

210-112 GAEB docx - Datei	Nov 23, 2018	docx 14.9 kB	Download
210-112 GAEB X81 - Datei	Feb 19, 2019	xml 2.8 kB	Download

---

#### CAD/CAE-Data

##### CAD data

2D/3D Models 210-112	URL	Download
----------------------	-----	----------

---

##### CAE data

WSCAD Universe 210-112	URL	Download
ZUKEN Portal 210-112	URL	Download

---

### Installation Notes

Subject to changes. Please also observe the further product documentation!



DIN-Rail	Item No.	Current [A]	Acc. to mm <sup>2</sup> /AWG Cu
DIN 35 x 7.5 (steel)			
slotted	210-112	76	16/6
unslotted	210-113	76	16/6
DIN 35 x 15 (steel)			
1.5 mm thick	210-114	125	35/2
2.3 mm thick	210-118	125	35/2
DIN 35 x 7.5 (Al)			
unslotted	210-196	76	16/6
DIN 35 x 15 (Cu)			
2.3 mm thick	210-198	309	150/6/0
Current applies to rails of 1 m/3'3" length			

When using standard carrier rails as ground conductor busbars, please refer to the maximum current capacities listed above.

Steel carrier rails are not suited for PEN (ground and N-conductor) applications per EN 60947-7-2 (VDE 0611, Part 3).

Subject to changes. Please also observe the further product documentation!

WAGO Kontakttechnik GmbH & Co. KG  
Hansastr. 27  
32423 Minden  
Phone: +49571 887-0 | Fax: +49571 887-169  
Email: [info.de@wago.com](mailto:info.de@wago.com) | Web: [www.wago.com](http://www.wago.com)

Do you have any questions about our products?  
We are always happy to take your call at {0}.